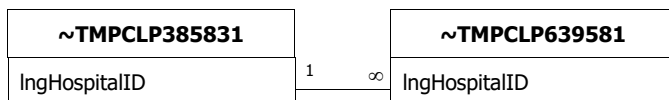


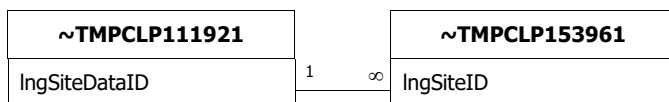
**Relationships**

**~TMPCLP385831~TMPCLP639581**



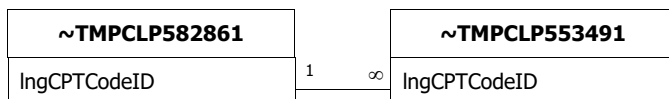
Attributes: Enforced, Inherited  
RelationshipType: One-To-Many (External)

**~TMPCLP111921~TMPCLP153961**



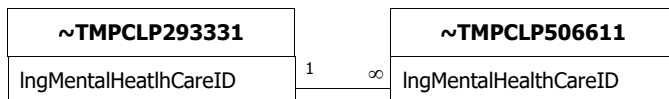
Attributes: Enforced, Inherited  
RelationshipType: One-To-Many (External)

**~TMPCLP582861~TMPCLP553491**



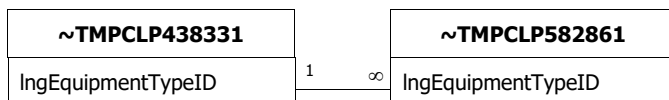
Attributes: Enforced, Inherited  
RelationshipType: One-To-Many (External)

**~TMPCLP293331~TMPCLP506611**



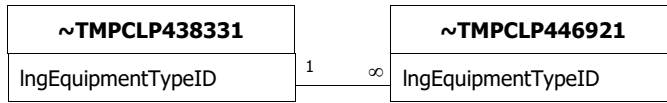
Attributes: Enforced, Inherited  
RelationshipType: One-To-Many (External)

**~TMPCLP438331~TMPCLP582861**



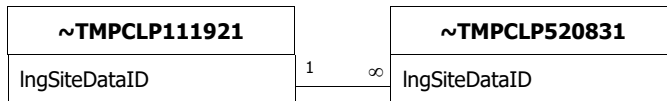
Attributes: Enforced, Inherited  
RelationshipType: One-To-Many (External)

**~TMPCLP438331~TMPCLP446921**



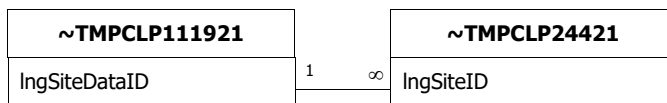
Attributes: Enforced, Inherited  
RelationshipType: One-To-Many (External)

**~TMPCLP111921~TMPCLP520831**



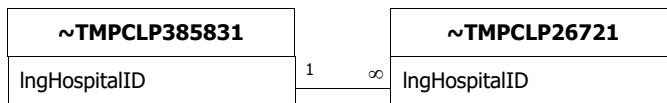
Attributes: Enforced, Inherited  
RelationshipType: One-To-Many (External)

**~TMPCLP111921~TMPCLP24421**



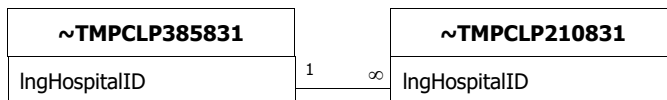
Attributes: Enforced, Inherited  
RelationshipType: One-To-Many (External)

**~TMPCLP385831~TMPCLP26721**



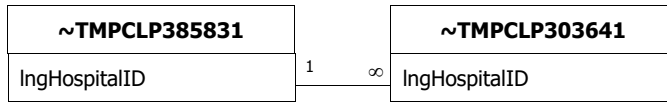
Attributes: Enforced, Inherited  
RelationshipType: One-To-Many (External)

**~TMPCLP385831~TMPCLP210831**



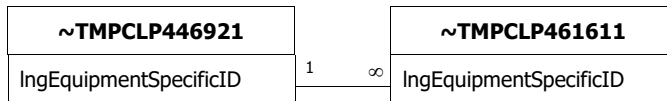
Attributes: Enforced, Inherited  
RelationshipType: One-To-Many (External)

**~TMPCLP385831~TMPCLP303641**



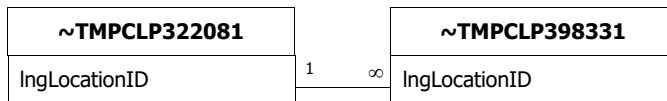
Attributes: Enforced, Inherited  
RelationshipType: One-To-Many (External)

**~TMPCLP446921~TMPCLP461611**



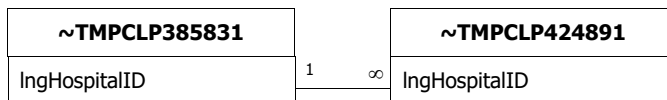
Attributes: Enforced, Inherited  
RelationshipType: One-To-Many (External)

**~TMPCLP322081~TMPCLP398331**



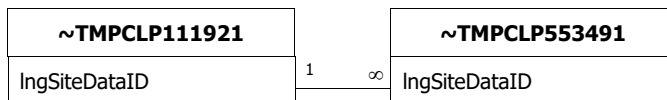
Attributes: Enforced, Inherited  
RelationshipType: One-To-Many (External)

**~TMPCLP385831~TMPCLP424891**



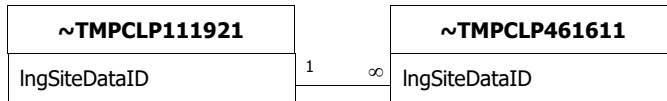
Attributes: Enforced, Inherited  
RelationshipType: One-To-Many (External)

**~TMPCLP111921~TMPCLP553491**



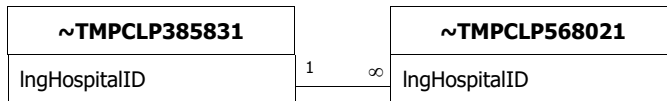
Attributes: Enforced, Inherited  
RelationshipType: One-To-Many (External)

**~TMPCLP111921~TMPCLP461611**



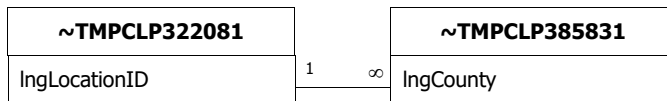
Attributes: Enforced, Inherited  
RelationshipType: One-To-Many (External)

**~TMPCLP385831~TMPCLP568021**



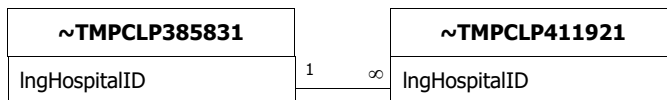
Attributes: Enforced, Inherited  
RelationshipType: One-To-Many (External)

**~TMPCLP322081~TMPCLP385831**



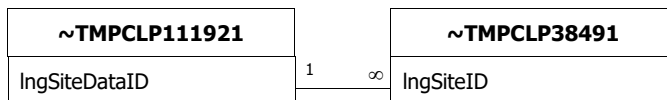
Attributes: Enforced, Inherited  
RelationshipType: One-To-Many (External)

**~TMPCLP385831~TMPCLP411921**



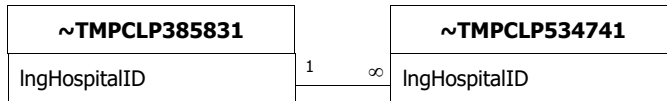
Attributes: Enforced, Inherited  
RelationshipType: One-To-Many (External)

**~TMPCLP111921~TMPCLP38491**



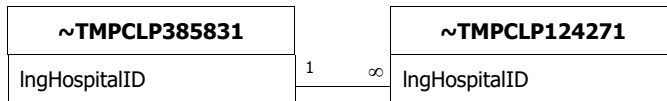
Attributes: Enforced, Inherited  
RelationshipType: One-To-Many (External)

**~TMPCLP385831~TMPCLP534741**



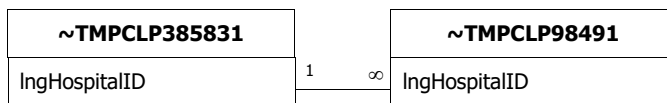
Attributes: Enforced, Inherited  
RelationshipType: One-To-Many (External)

**~TMPCLP385831~TMPCLP124271**



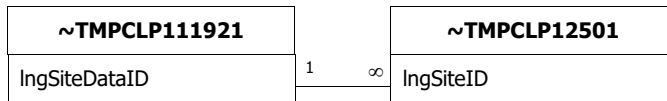
Attributes: Enforced, Inherited  
RelationshipType: One-To-Many (External)

**~TMPCLP385831~TMPCLP98491**



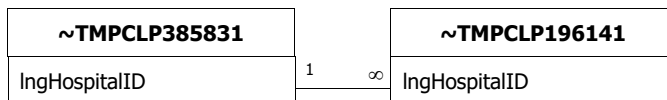
Attributes: Enforced, Inherited  
RelationshipType: One-To-Many (External)

**~TMPCLP111921~TMPCLP12501**



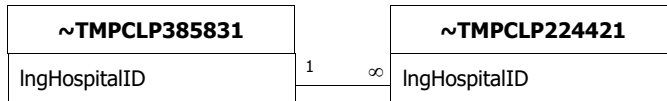
Attributes: Enforced, Inherited  
RelationshipType: One-To-Many (External)

**~TMPCLP385831~TMPCLP196141**



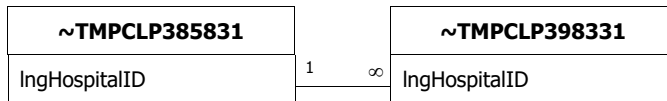
Attributes: Enforced, Inherited  
RelationshipType: One-To-Many (External)

**~TMPCLP385831~TMPCLP224421**



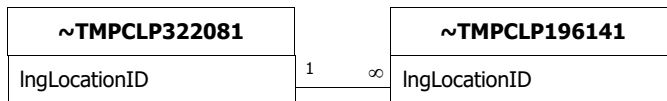
Attributes: Enforced, Inherited  
RelationshipType: One-To-Many (External)

**~TMPCLP385831~TMPCLP398331**



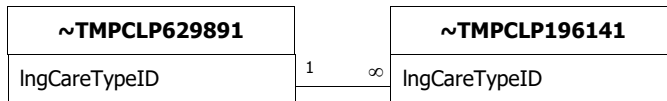
Attributes: Enforced, Inherited  
RelationshipType: One-To-Many (External)

**~TMPCLP322081~TMPCLP196141**



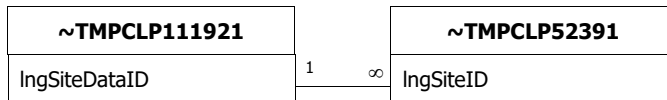
Attributes: Enforced, Inherited  
RelationshipType: One-To-Many (External)

**~TMPCLP629891~TMPCLP196141**



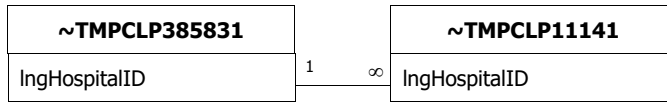
Attributes: Enforced, Inherited  
RelationshipType: One-To-Many (External)

**~TMPCLP111921~TMPCLP52391**



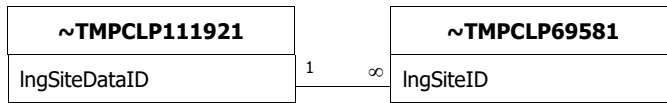
Attributes: Enforced, Inherited  
RelationshipType: One-To-Many (External)

**~TMPCLP385831~TMPCLP11141**



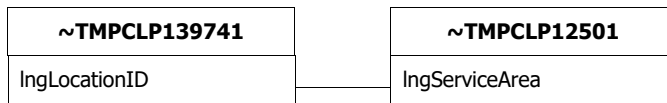
Attributes: Enforced, Inherited  
RelationshipType: One-To-Many (External)

**~TMPCLP111921~TMPCLP69581**



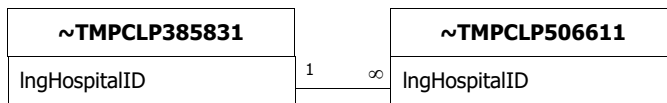
Attributes: Enforced, Inherited  
RelationshipType: One-To-Many (External)

**~TMPCLP139741~TMPCLP12501**



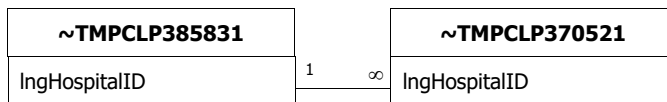
Attributes: Not Enforced, Inherited  
RelationshipType: One-To-Many (External)

**~TMPCLP385831~TMPCLP506611**



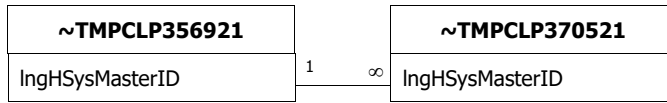
Attributes: Enforced, Inherited  
RelationshipType: One-To-Many (External)

**~TMPCLP385831~TMPCLP370521**



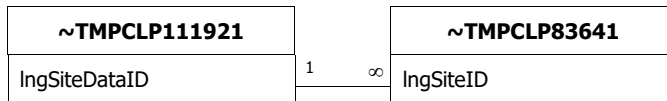
Attributes: Enforced, Inherited  
RelationshipType: One-To-Many (External)

**~TMPCLP356921~TMPCLP370521**



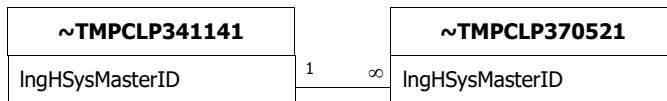
Attributes: Enforced, Inherited  
RelationshipType: One-To-Many (External)

**~TMPCLP111921~TMPCLP83641**



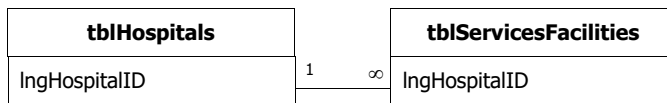
Attributes: Enforced, Inherited  
RelationshipType: One-To-Many (External)

**~TMPCLP341141~TMPCLP370521**



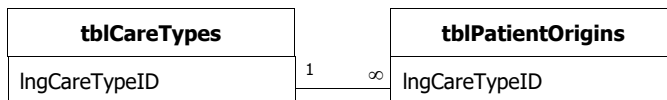
Attributes: Enforced, Inherited  
RelationshipType: One-To-Many (External)

**tblHospitalstblServicesFacilities**



Attributes: Enforced  
RelationshipType: One-To-Many

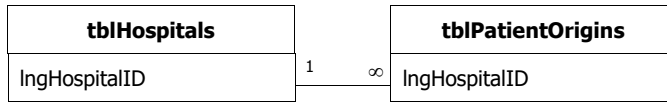
**tblCareTypestblPatientOrigins**



Attributes: Enforced  
RelationshipType: One-To-Many

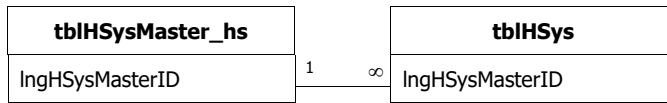


**tblHospitalstblPatientOrigins**



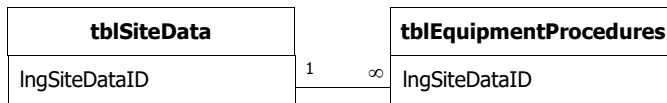
Attributes: Enforced  
RelationshipType: One-To-Many

**tblHSysMaster\_hstblHSys**



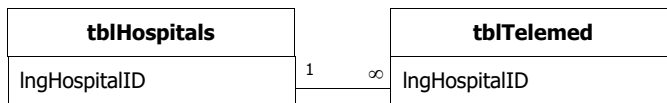
Attributes: Enforced  
RelationshipType: One-To-Many

**tblSiteDatatblEquipmentProcedures**



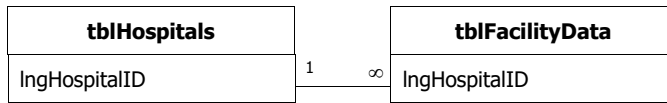
Attributes: Enforced  
RelationshipType: One-To-Many

**tblHospitalstblTelemed**



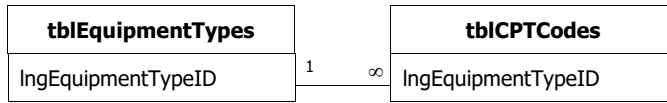
Attributes: Enforced  
RelationshipType: One-To-Many

**tblHospitalstblFacilityData**



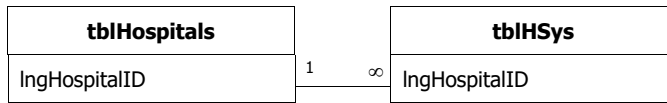
Attributes: Enforced  
RelationshipType: One-To-Many

**tblEquipmentTypestblCPTCodes**



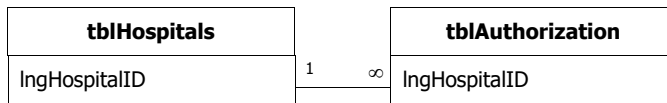
Attributes: Enforced  
RelationshipType: One-To-Many

**tblHospitalstblHSys**



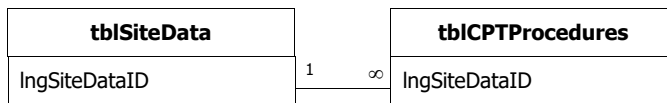
Attributes: Enforced  
RelationshipType: One-To-Many

**tblHospitalstblAuthorization**



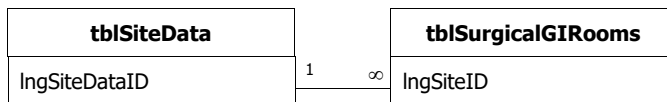
Attributes: Enforced  
RelationshipType: One-To-Many

**tblSiteDatatblCPTProcedures**



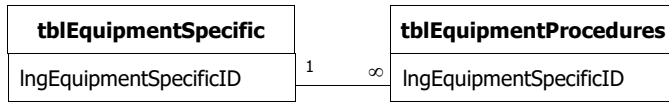
Attributes: Enforced  
RelationshipType: One-To-Many

**tblSiteDatatblSurgicalGIRooms**



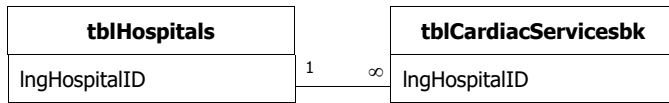
Attributes: Enforced  
RelationshipType: One-To-Many

**tblEquipmentSpecifictblEquipmentProcedures**



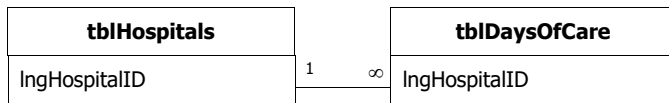
Attributes: Enforced  
RelationshipType: One-To-Many

**tblHospitalstblCardiacServicesbk**



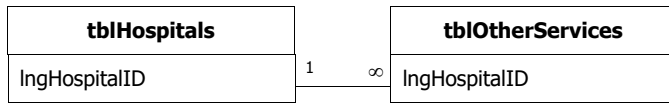
Attributes: Enforced  
RelationshipType: One-To-Many

**tblHospitalstblDaysOfCare**



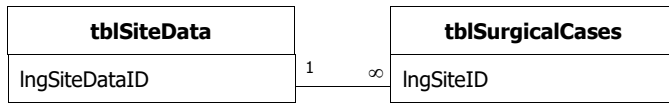
Attributes: Enforced  
RelationshipType: One-To-Many

**tblHospitalstblOtherServices**



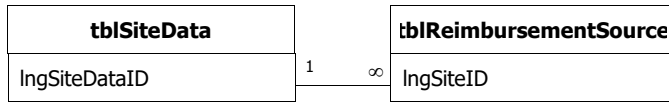
Attributes: Enforced  
RelationshipType: One-To-Many

**tblSiteDatatblSurgicalCases**



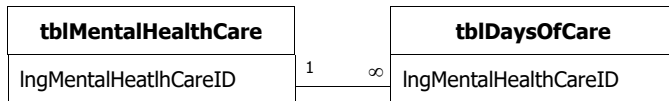
Attributes: Enforced  
RelationshipType: One-To-Many

**tblSiteDatatblReimbursementSource**



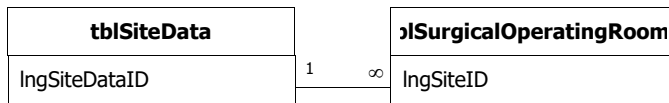
Attributes: Enforced  
RelationshipType: One-To-Many

**tblMentalHealthCaretblDaysOfCare**



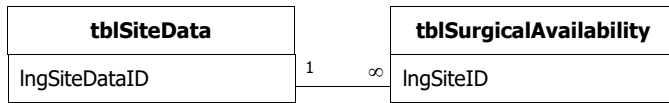
Attributes: Enforced  
RelationshipType: One-To-Many

**tblSiteDatatblSurgicalOperatingRooms**



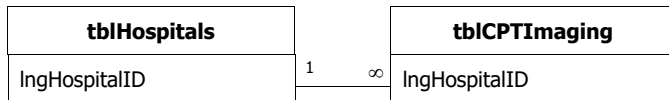
Attributes: Enforced  
RelationshipType: One-To-Many

**tblSiteDatatblSurgicalAvailability**



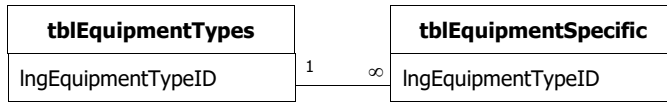
Attributes: Enforced  
RelationshipType: One-To-Many

**tblHospitalstblCPTImaging**



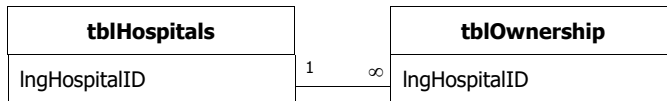
Attributes: Enforced  
RelationshipType: One-To-Many

**tblEquipmentTypestblEquipmentSpecific**



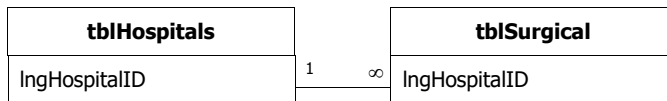
Attributes: Enforced  
RelationshipType: One-To-Many

**tblHospitalstblOwnership**



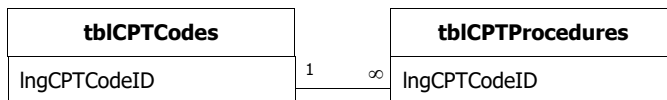
Attributes: Enforced  
RelationshipType: One-To-Many

**tblHospitalstblSurgical**



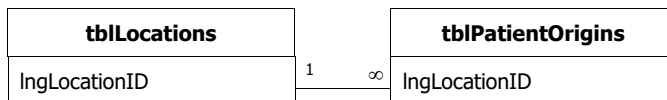
Attributes: Enforced  
RelationshipType: One-To-Many

**tblCPTCodestblCPTProcedures**



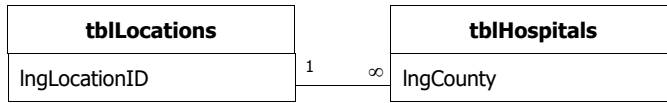
Attributes: Enforced  
RelationshipType: One-To-Many

**tblLocationstblPatientOrigins**



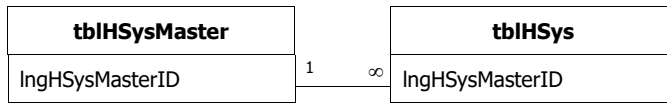
Attributes: Enforced  
RelationshipType: One-To-Many

**tblLocationstblHospitals**



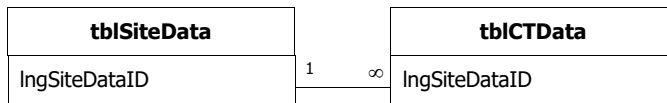
Attributes: Enforced  
RelationshipType: One-To-Many

**tblHSysMastertblHSys**



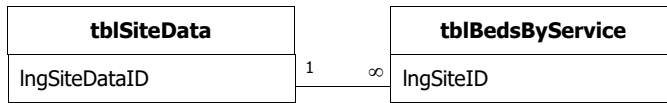
Attributes: Enforced  
RelationshipType: One-To-Many

**tblSiteDatatblICTData**



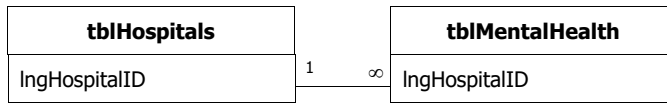
Attributes: Enforced  
RelationshipType: One-To-Many

**tblSiteDatatblBedsByService**



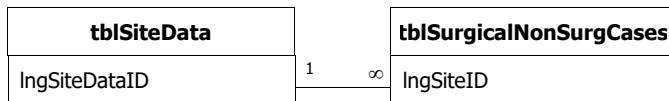
Attributes: Enforced  
RelationshipType: One-To-Many

**tblHospitalstblMentalHealth**



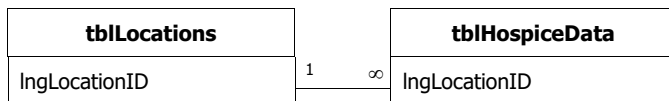
Attributes: Enforced  
RelationshipType: One-To-Many

**tblSiteData**tblSurgicalNonSurgCases



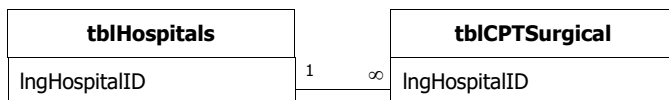
Attributes: Enforced  
RelationshipType: One-To-Many

**tblLocation**tblHospiceData



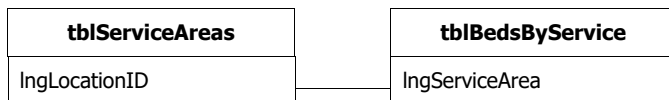
Attributes: Enforced  
RelationshipType: One-To-Many

**tblHospital**tblCPTSurgical



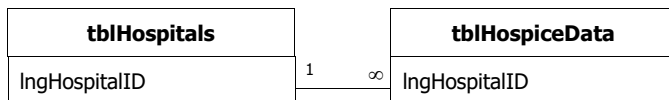
Attributes: Enforced  
RelationshipType: One-To-Many

**tblServiceArea**tblBedsByService



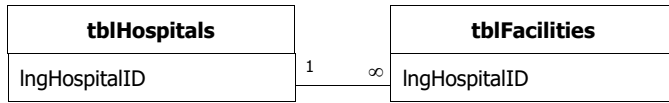
Attributes: Not Enforced  
RelationshipType: One-To-Many

**tblHospital**tblHospiceData



Attributes: Enforced  
RelationshipType: One-To-Many

**tblHospitalstblFacilities**



Attributes: Enforced  
RelationshipType: One-To-Many