

Relationships for Hospitals

Tuesday, May 26, 2009

tblBedsByService
IngBedsID
IngHospitalID
strCampusName
IngCampusType
IngICUBurnLic
IngICUBurnStaff
IngICUBurnIDOC
IngICUCardiacLic
IngICUCardiacStaff
IngICUCardiacIDOC
IngICUCVSLic
IngICUCVSStaff
IngICUCVSIIDOC
IngICUMedSurgLic
IngICUMedSurgStaff
IngICUMedSurgIDOC
IngICUNeonatal4Lic
IngICUNeonatal4Staff
IngICUNeonatal4IDOC
IngICUPedLic
IngICUPedStaff
IngICUPedIDOC
IngICURespLic
IngICURespStaff
IngICURespIDOC
strICUOtherType
IngICUOtherLic
IngICUOtherStaff
IngICUOtherIDOC
IngUnitGynLic
IngUnitGynStaff
IngUnitGynIDOC
IngUnitMedSurgLic
IngUnitMedSurgStaff
IngUnitMedSurgIDOC
IngUnitNeonatal3Lic
IngUnitNeonatal3Staff
IngUnitNeonatal3IDOC
IngUnitNeonatal2Lic
IngUnitNeonatal2Staff
IngUnitNeonatal2IDOC
IngUnitObsLic

tblCardiacServices
IngCardiacID
IngHospitalID
IngCampusType
IngCCNumUnitsDCC
IngCCNumUnitsICC
IngCCNumUnitsEP
IngCCNumPatsUnder14DCC
IngCCNumPatsUnder14ICC
IngCCNumPatsUnder14EP
IngCCNumPats15DCC
IngCCNumPats15ICC
IngCCNumPats15EP
IngCCNumPatsDCC
IngCCNumPatsICC
IngCCNumPatsEP
IngCCNumProcFixedDCC
IngCCNumProcFixedICC
IngCCNumProcFixedEP
IngCCNumProcMobileDCC
IngCCNumProcMobileICC
IngCCNumProcMobileEP
IngCCNumProcDCC
IngCCNumProcICC
IngCCNumProcEP
strNameMobileVendor
IngNumOpHoursPerWeek
IngOHSTotalOHByPassMachines
IngOHSTotalOHByPassProcs
IngOHSTotalOHByPassProcs
IngOHSTotalOHProcs
IngOHSTotalOHByPassProcsUnder14
IngOHSTotalOHProcsUnder14
IngNumGIEndoRooms
IngNumGIEndoCases
IngNumNonGIEndoCases
IngTotalEndoCases
IngNumGIEndoProcs
IngNumNonGIEndoProcs
IngTotalEndoProcs
ysnAppAddGIRoomsCertOfNeed
intNumAdditionalGIRoomsCertOfNeed

tblCareTypes
IngCareTypeID
strTypesOfCare

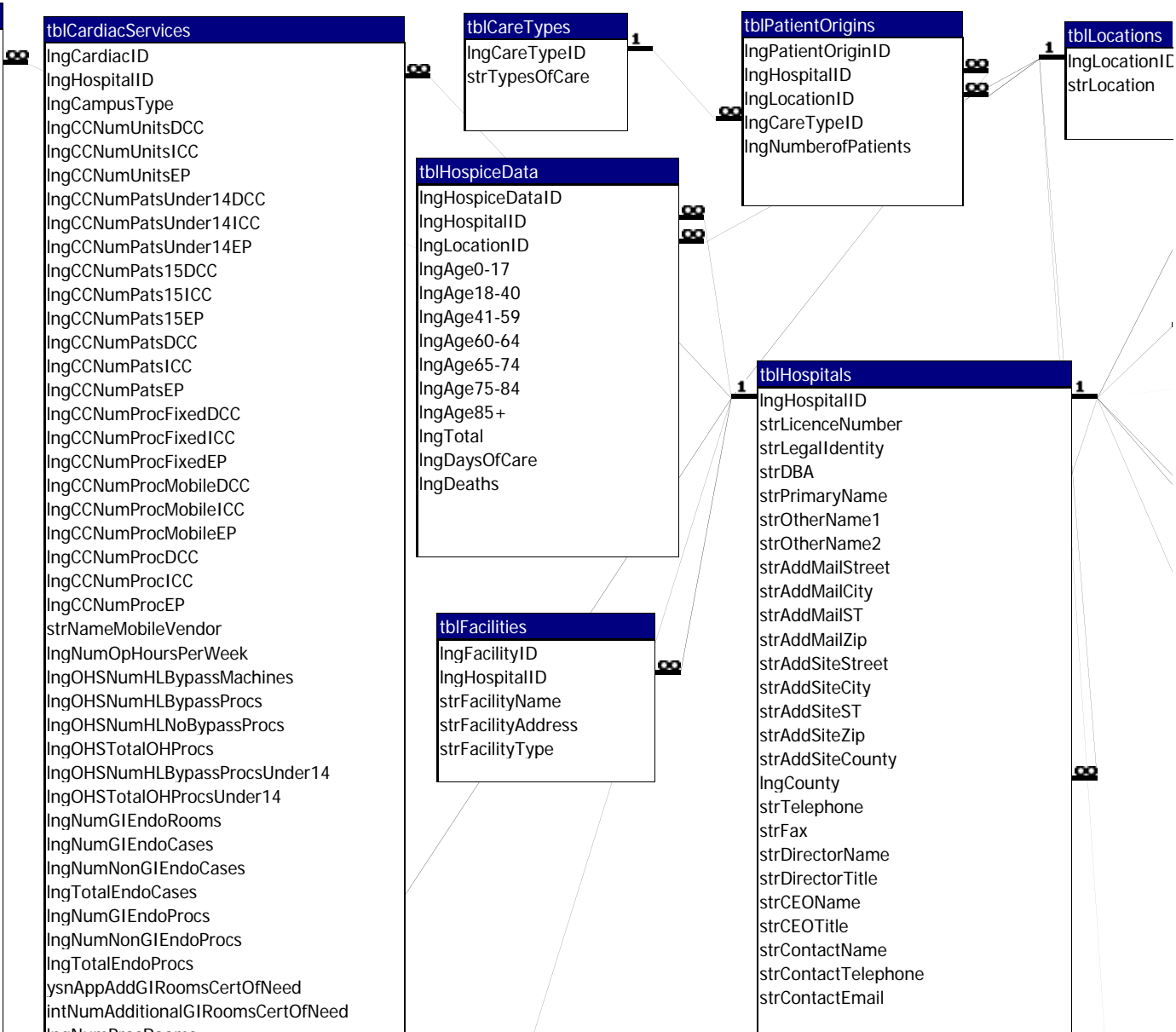
tblHospiceData
IngHospiceDataID
IngHospitalID
IngLocationID
IngAge0-17
IngAge18-40
IngAge41-59
IngAge60-64
IngAge65-74
IngAge75-84
IngAge85+
IngTotal
IngDaysOfCare
IngDeaths

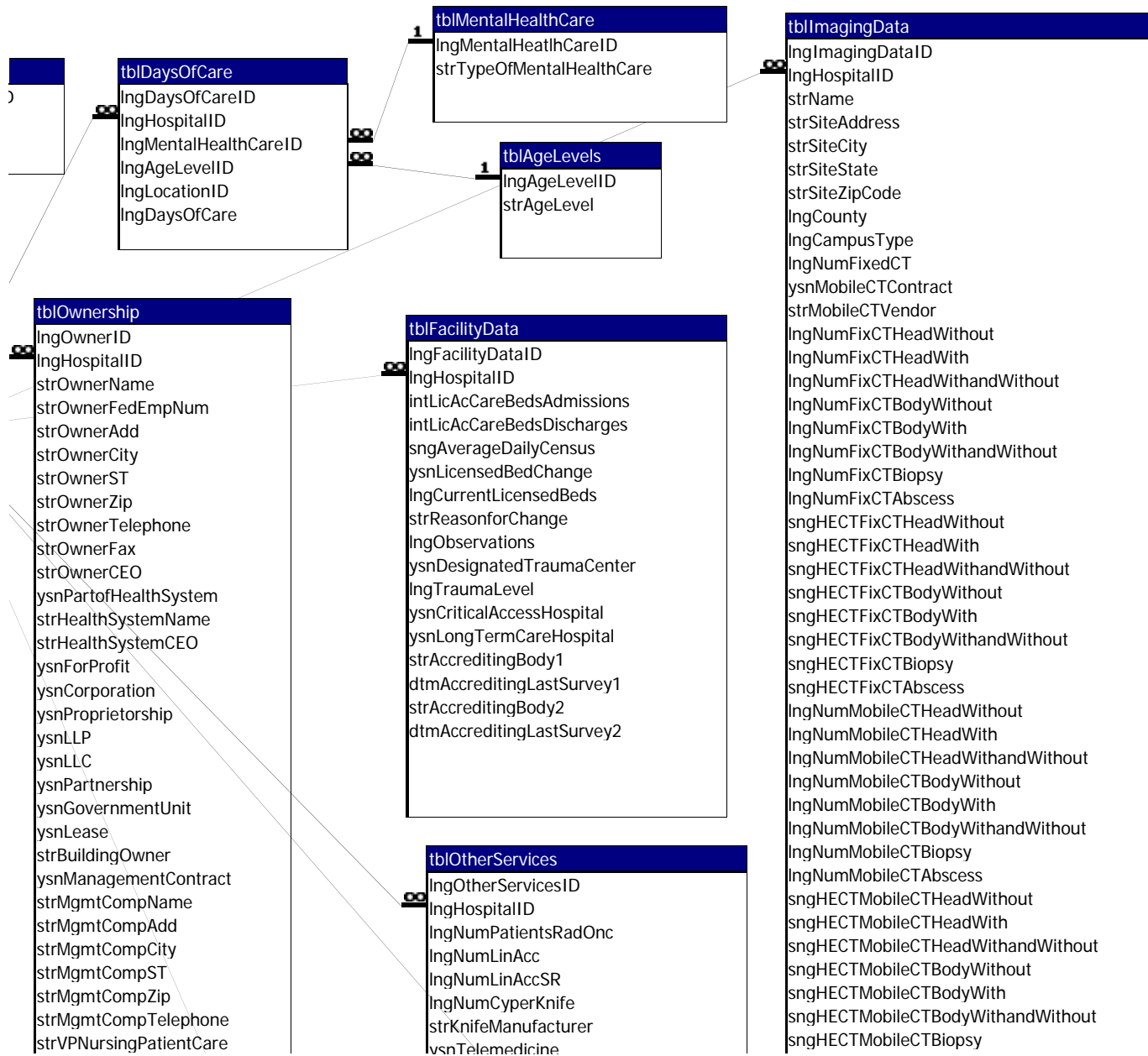
tblFacilities
IngFacilityID
IngHospitalID
strFacilityName
strFacilityAddress
strFacilityType

tblPatientOrigins
IngPatientOriginID
IngHospitalID
IngLocationID
IngCareTypeID
IngNumberofPatients

tblLocations
IngLocationID
strLocation

tblHospitals
IngHospitalID
strLicenceNumber
strLegalIdentity
strDBA
strPrimaryName
strOtherName1
strOtherName2
strAddMailStreet
strAddMailCity
strAddMailST
strAddMailZip
strAddSiteStreet
strAddSiteCity
strAddSiteST
strAddSiteZip
strAddSiteCounty
IngCounty
strTelephone
strFax
strDirectorName
strDirectorTitle
strCEOName
strCEOTitle
strContactName
strContactTelephone
strContactEmail





lngUnitObsStaff
 lngUnitObsIDOC
 lngUnitOncLic
 lngUnitOncStaff
 lngUnitOncIDOC
 lngUnitOrthoLic
 lngUnitOrthoStaff
 lngUnitOrthoIDOC
 lngUnitPedLic
 lngUnitPedStaff
 lngUnitPedIDOC
 strUnitOtherType

lngNumProcRooms
 lngNumCasesPainManagementInpatient
 lngNumCasesPainManagementAmbulatory
 lngNumCasesCysoscopyInpatient
 lngNumCasesCysoscopyAmbulatory
 lngNumCasesNonGIEndoInpatient
 lngNumCasesNonGIEndoAmbulatory
 lngNumCasesGIEndoInpatient
 lngNumCasesGIEndoAmbulatory
 lngNumCasesYAGLaserInpatient
 lngNumCasesYAGLaserAmbulatory
 strNumCasesOther1Name
 lngNumCasesOther1Inpatient

lngSurgeryID
 lngHospitalID
 strCampusName
 lngCampusType
 lngOROpenHeart
 lngORCSection
 lngORInpatient
 lngORAmbulatory
 lngORShared
 lngORTotal
 ysnAppForAddORCertOfNeed
 lngNumRoomsCertOfNeed
 lngCasesCardioInpatient
 lngCasesCardioAmbulatory
 lngCasesOpenHeartInpatient
 lngCasesGeneralInpatient
 lngCasesGeneralAmbulatory
 lngCasesNeuroInpatient
 lngCasesNeuroAmbulatory
 lngCasesObGynInpatient
 lngCasesObGynAmbulatory
 lngCasesOpthInpatient
 lngCasesOpthAmbulatory
 lngCasesOralInpatient
 lngCasesOralAmbulatory
 lngCasesOrthoInpatient
 lngCasesOrthoAmbulatory
 lngCasesOtolaryInpatient
 lngCasesOtolaryAmbulatory
 lngCasesPlasticInpatient
 lngCasesPlasticAmbulatory
 lngCasesUrologyInpatient

lngServicesID
 lngHospitalID
 strCampus
 lngLiveBirthsVD
 lngLiveBirthsCS
 lngStillBirths
 lngDeliveryRoomsDO
 lngDeliveryRoomsLDR
 lngDeliveryRoomsLDRP
 lngBassinets
 lngAbortionProcsPerYear
 lngNumEDRooms
 lngNumTraumaRooms
 lngNumFastTrackRooms
 lngNumEDVisits
 lngNumAdmitsFromED
 lngNumUCVisits
 ysnIsED247
 strEDHoursSunOpen
 strEDHoursSunClose
 strEDHoursMonOpen
 strEDHoursMonClose
 strEDHoursTuesOpen
 strEDHoursTuesClose
 strEDHoursWedOpen
 strEDHoursWedClose
 strEDHoursThurOpen
 strEDHoursThurClose
 strEDHoursFriOpen
 strEDHoursFriClose
 strEDHoursSatOpen
 strEDHoursSatClose

tblMRIData
 lngMRIDataID
 lngSiteDataID
 lngCampusType
 lngDuplEntry
 lngTotalMRIProcedures
 lngNumClosedFixMRI
 lngNumOpenFixMRI
 lngNumTotalFixMRI
 lngFixMRIInWith
 lngFixMRIInWithout
 lngFixMRIInTotal
 lngFixMRIOutWith
 lngFixMRIOutWithout
 lngFixMRIOutTotal
 strMobileMRIName1
 lngNumMobileMRI1
 lngMobileMRIInWith1
 lngMobileMRIInWithout1
 lngMobileMRIInTotal1
 lngMobileMRIOutWith1
 lngMobileMRIOutWithout1
 lngMobileMRIOutTotal1
 strMobileMRIName2
 lngNumMobileMRI2
 lngMobileMRIInWith2
 lngMobileMRIInWithout2
 lngMobileMRIInTotal2

tblSiteData
 lngSiteDataID
 lngHospitalID
 strName
 strSiteAddress
 strSiteCity
 strSiteState
 strSiteZipCode
 lngCounty
 lngServiceSite

tblCPTProcedures
 lngCPTProcedureID
 lngSiteDataID
 lngCPTCodeID
 lngCPTProcedures

tblCPTCodes
 lngCPTCodeID
 strCPTCode
 strCPTDescript
 ysnUsed
 lngEquipmentTypeID
 sngESTV

tblEquip



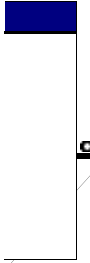
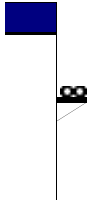
strDirectorofPlanning

ysnReadTelemedicine
ysnCardiacRehabProgram
ysnChemotherapy
ysnClinicalPsychologyServices
ysnDentalServices
ysnRehabilitationOutpatientUnit
ysnPodiatricServices
ysnGeneticCounselingService
ysnAcuteDialysis
IngNumAcuteDialysisStations

sngHECTMobileCTAbscess
IngPetHSA
IngPetServiceArea
IngFixPetNum
IngFixPetInp
IngFixPetOut
IngFixPetTotal
IngMobilePetNum
IngMobilePetInp
IngMobilePetOut
IngMobilePetTotal

tblMentalHealth
IngMentalHealthID
IngHospitalID
strPsychiatricCareName
strPsychiatricCareAddress
strPsychiatricCareDirector
strMHA1100Location
strMHA1200Location
IngMHA12000-12
IngMHA120013-17
IngMHA12000-17
IngMHA120018+
IngMHA1200Total
strMHA1300Location
IngMHA13000-12
IngMHA130013-17
IngMHA13000-17
IngMHA1300Total
strMHA1400Location
strMHA1500Location
IngMHA15000-12
IngMHA150013-17
IngMHA15000-17
IngMHA1500Total
strMHA5000Location
IngMHA50000-12
IngMHA500013-17
IngMHA50000-17
IngMHA500018+
IngMHA5000Total

tblReimbursementSource
IngReimburseID
IngHospitalID
strCampus
IngCampusType
IngCharityCareIDC
IngCharityCareEV
IngCharityCareOV
IngCharityCareISC
IngCharityCareASC
IngCommInsIDC
IngCommInsEV
IngCommInsOV
IngCommInsISC
IngCommInsASC
IngMedicaidIDC
IngMedicaidEV
IngMedicaidOV
IngMedicaidISC
IngMedicaidASC
IngMedicareIDC
IngMedicareEV
IngMedicareOV
IngMedicareISC
IngMedicareASC
IngManagedCareIDC
IngManagedCareEV
IngManagedCareOV
IngManagedCareISC
IngManagedCareASC
strOtherCare
IngOtherIDC



mentTypes

IngCasesUrologyAmbulatory
IngCasesVascularInpatient
IngCasesVascularAmbulatory
IngCasesOtherInpatient
IngCasesOtherAmbulatory
IngCsecsInCsecORInpatient
IngCsecsNotInCsecORInpatient
IngCasesTotalInpatient
IngCasesTotalAmbulatory
dblAvgHoursPerDay
dblAvgDaysPerYear
dblAvgCaseTimeInpatient
dblAvgCaseTimeAmbulatory

ysnIsPhy247
strPhyHoursSunOpen
strPhyHoursSunClose
strPhyHoursMonOpen
strPhyHoursMonClose
strPhyHoursTuesOpen
strPhyHoursTuesClose
strPhyHoursWedOpen
strPhyHoursWedClose
strPhyHoursThurOpen
strPhyHoursThurClose
strPhyHoursFriOpen
strPhyHoursFriClose
strPhyHoursSatOpen
strPhyHoursSatClose
ysnMedicalAirService
IngOwnedLeasedService
IngRotaryNum
IngRotaryOwned
IngRotaryLeased
IngRotaryTransports
IngFixedWingNum

IngMobileMRIOutWith2
IngMobileMRIOutWithout2
IngMobileMRIOutTotal2
IngNumMRIPolicy
IngMRIPolicyInWith
IngMRIPolicyInWithout
IngMRIPolicyInTotal
IngMRIPolicyOutWith
IngMRIPolicyOutWithout
IngMRIPolicyOutTotal
IngNumMRIRes
IngMRIResInWith
IngMRIResInWithout
IngMRIResInTotal
IngMRIResOutWith
IngMRIResOutWithout
IngMRIResOutTotal

IngEquip
strEquip

omentTypeID
omentType

strMHA5200Location
IngMHA52000-12
IngMHA520013-17
IngMHA52000-17
IngMHA520018+
IngMHA5200Total
strMHA3100Location
IngMHA31000-12
IngMHA310013-17
IngMHA31000-17
IngMHA310018+
IngMHA3100Total
strMHA3200Location
IngMHA32000-12
IngMHA320013-17
IngMHA32000-17
IngMHA320018+
IngMHA3200Total
strMHA3300Location
strMHA3400Location
IngMHA34000-12
IngMHA340013-17
IngMHA34000-17
IngMHA340018+
IngMHA3400Total

IngOtherEV
IngOtherOV
IngOtherISC
IngOtherASC
IngTotalIDC
IngTotalEV
IngTotalOV
IngTotalISC
IngTotalASC
curMedicaidCosts
dblMedicaidCosts
curCharityCare
dblCharityCare
dblCharityCareNetRev
curBadDebt
dblBadDebtNetRev