

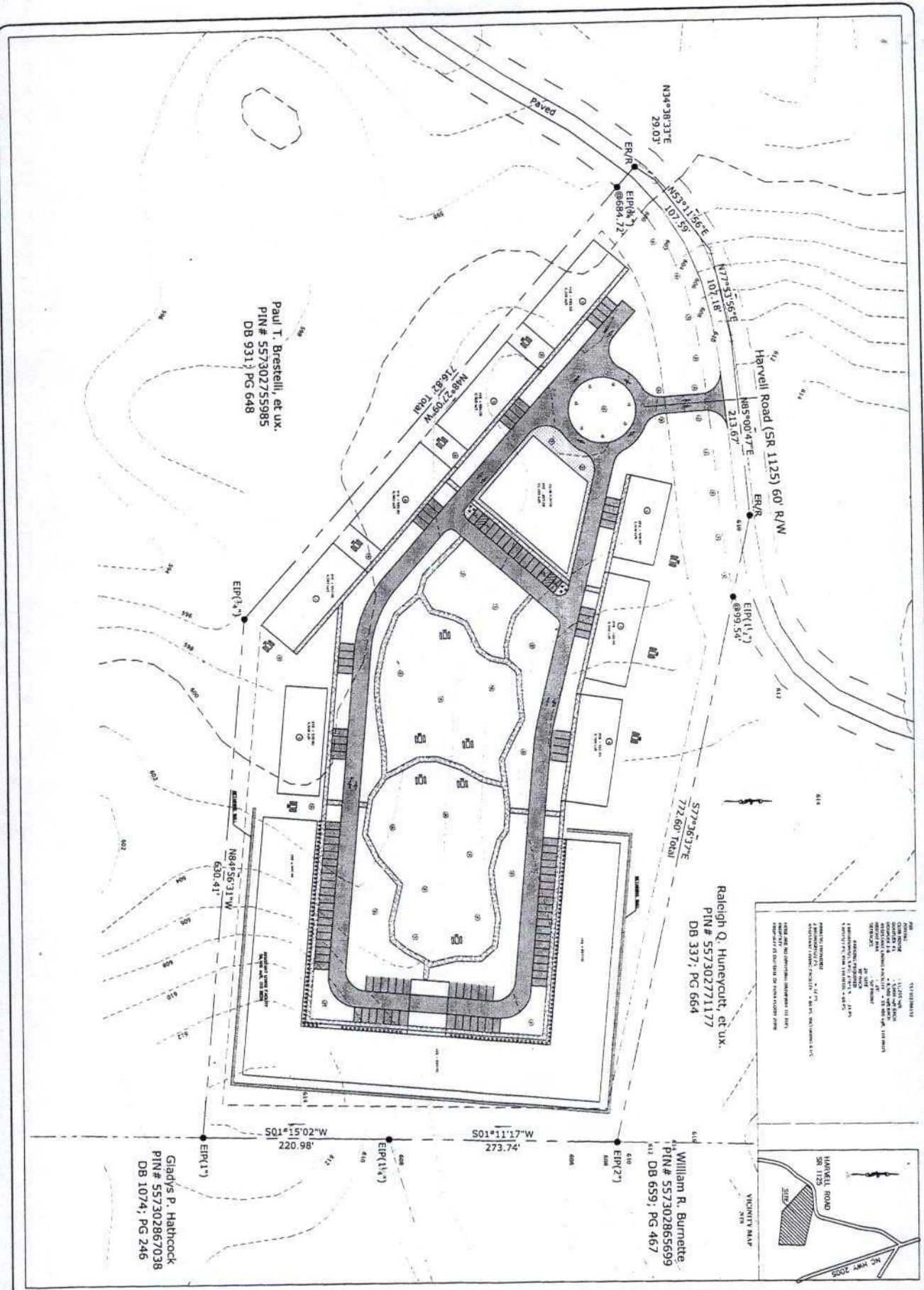
Comments by Mary Bender on behalf of Jason Bartell
Public Hearing for Proposed 2009 N.C. State Medical Facilities Plan
July 30, 2008
Carolinas College of Health Sciences Auditorium
1200 Blythe Boulevard, Charlotte, North Carolina

Jason Bartell is respectfully submitting a petition to the NC Division of Health Service Regulation to consider adjusting the need determination for nursing care beds in nursing homes and adult care home beds in Stanly County, North Carolina to allow for the development of 12 acres located at 8582 Harvell Road in Stanfield, North Carolina (Stanly County). The proposed development would consist of a 110 bed nursing home with Alzheimer's wing (about 59,400 sq ft), 8 duplex buildings (ranging from 5,000 sq ft to 6,500 sq ft) and a club house building (about 11,255 sq ft). Adjustment to the need determination through approval of the petition would allow the proposed project to move forward.

DFS Health Planning
RECEIVED

JUL 30 2008

Medical Facilities
PLANNING SECTION



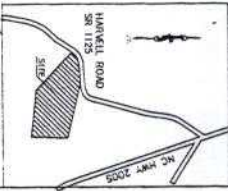
Paul T. Brestelli, et ux.
 PIN# 557302755985
 DB 931; PG 648

Raleigh Q. Huneault, et ux.
 PIN# 557302771177
 DB 337; PG 664

William R. Burnette
 PIN# 557302865699
 DB 659; PG 467

Gladys P. Hathcock
 PIN# 557302867038
 DB 1074; PG 246

NOTES:
 1. ALL DIMENSIONS ARE IN FEET AND DECIMALS THEREOF.
 2. THE DIMENSIONS SHOWN ON THIS PLAN ARE THE RESULT OF A SURVEY CONDUCTED BY DS ENGINEERING, INC. ON 03/01/08.
 3. THE DIMENSIONS SHOWN ON THIS PLAN ARE THE RESULT OF A SURVEY CONDUCTED BY DS ENGINEERING, INC. ON 03/01/08.
 4. THE DIMENSIONS SHOWN ON THIS PLAN ARE THE RESULT OF A SURVEY CONDUCTED BY DS ENGINEERING, INC. ON 03/01/08.
 5. THE DIMENSIONS SHOWN ON THIS PLAN ARE THE RESULT OF A SURVEY CONDUCTED BY DS ENGINEERING, INC. ON 03/01/08.



DS Engineering

1223 Fox Run Dr., Charlotte, NC 28212 E-mail: davshkl@gmail.com
 ph. 704/497-0081
 fax 1-775-269-9739



RETIREMENT COMMUNITY
 STANFIELD TOWNSHIP
 STANLEY COUNTY, NC
 PID 557302865699

SKETCH SITE PLAN

SCALE: H: 1" = 40' V: 1" = 80' DATE: MARCH 2008 SHEET: 1 of 1