



DEPARTMENT OF HEALTH AND HUMAN SERVICES
DIVISION OF HEALTH SERVICE REGULATION

ROY COOPER
GOVERNOR

MANDY COHEN, MD, MPH
SECRETARY

MARK PAYNE
DIRECTOR

May 22, 2017

Catharine W. Cummer, Regulatory Counsel, Strategic Planning
Duke University Health System
3100 Tower Blvd, Suite 1300
Durham NC 27707

Exempt from Review

Record #: 2278
Facility Name: Duke Raleigh Hospital
FID #: 923421
Business Name: Duke University Health System
Business #: 640
Project Description: Construction of a six-story bed tower to replace space for existing acute care beds, add space for observation beds, replace eleven existing operating rooms, construct a new front lobby and central utility plant, and modernize sterile processing
County: Wake

Dear Ms. Cummer:

The Healthcare Planning and Certificate of Need Section, Division of Health Service Regulation (Agency), determined that based on your letter of May 8, 2017, the above referenced proposal is exempt from certificate of need review in accordance with N.C. Gen. Stat. §131E-184(g). Therefore, you may proceed to offer, develop or establish the above referenced project without a certificate of need.

However, you need to contact the Agency's Construction and Acute and Home Care Licensure and Certification Sections to determine if they have any requirements for development of the proposed project.

It should be noted that this determination is binding only for the facts represented by you. Consequently, if changes are made in the project or in the facts provided in your correspondence referenced above, a new determination as to whether a certificate of need is required would need to be made by the Agency. Changes in a project include, but are not limited to: (1) increases in the capital cost; (2) acquisition of medical equipment not included in the original cost estimate;

HEALTHCARE PLANNING AND CERTIFICATE OF NEED SECTION
WWW.NCDHHS.GOV
TELEPHONE 919-855-3873
LOCATION: EDGERTON BUILDING • 809 RUGGLES DRIVE • RALEIGH, NC 27603
MAILING ADDRESS: 2704 MAIL SERVICE CENTER • RALEIGH, NC 27699-2704
AN EQUAL OPPORTUNITY/ AFFIRMATIVE ACTION EMPLOYER



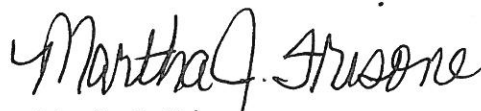
(3) modifications in the design of the project; (4) change in location; and (5) any increase in the number of square feet to be constructed.

If you have any questions concerning this matter, please feel free to contact this office.

Sincerely,



Michael J. McKillip
Project Analyst



Martha J. Frisone
Assistant Chief Certificate of Need

cc: Construction Section, DHSR
Acute and Home Care Licensure and Certification Section, DHSR
Paige Bennett, Assistant Chief, Healthcare Planning, DHSR

Duke University Health System

Catharine W. Cummer
Regulatory Counsel, Strategic Planning

May 8, 2017

Via Electronic Mail

Ms. Martha Frisone
Certificate of Need Section
Division of Health Service Regulation
2704 Mail Service Center
Raleigh, NC 27699-2704

Re: Exemption Notice/Duke Raleigh Hospital

Dear Ms. Frisone:

The purpose of this letter is to provide notice of a construction and renovation project at Duke Raleigh Hospital and to request confirmation that this project is exempt from certificate of need review. Duke anticipates that it will spend more than \$2 million to renovate, replace and/or expand portions of the existing hospital facility. This project does not relate to any planned change in bed capacity or the addition of any health service facility or new institutional health services other than that allowed in GS 131E-176(b). Accordingly, we understand that this project is exempt from certificate of need review pursuant to G.S. 131E-184(g).

The project includes the construction of a new, six-story bed tower structure to accommodate patient care and support services space along with the renovation of existing space. The project will allow for the conversion of semi-private rooms to private rooms, and for the construction of space to accommodate observation patients. 11 new operating rooms will be built to replace 11 smaller existing operating rooms. The project also includes construction of a unified front lobby connecting the current hospital to the new addition, construction of a central utility plant, and modernization of sterile processing.

The project will not increase the number of licensed beds or operating rooms, or other regulated assets. It is designed "to renovate, replace on the same site, or expand the entirety or a portion of an existing health service facility that is located on the main campus," defined in 131E-176(14n) as "[t]he site of the main building from which a licensed health service facility provides clinical patient services and exercises financial and administrative control over the entire facility, including the buildings and grounds adjacent to that main building" and "[o]ther areas and structures that are not strictly contiguous to the main building but are located within 250 yards of the main building." The building from which Duke Raleigh Hospital, a licensed acute care hospital, provides clinical patient services and exercises financial and administrative



Ms. Martha Frisone
May 8, 2017

control over the entire facility is the main hospital building located at 3400 Wake Forest Road. A campus map can be found online at <http://www.dukeraleighhospital.org/locations>. The new bed tower structure will be adjacent and connected to the existing hospital building. Plans for the project are enclosure.

Please let me know if you have any questions about this project. We would appreciate your confirmation that this project is exempt from further review.

Very truly yours,

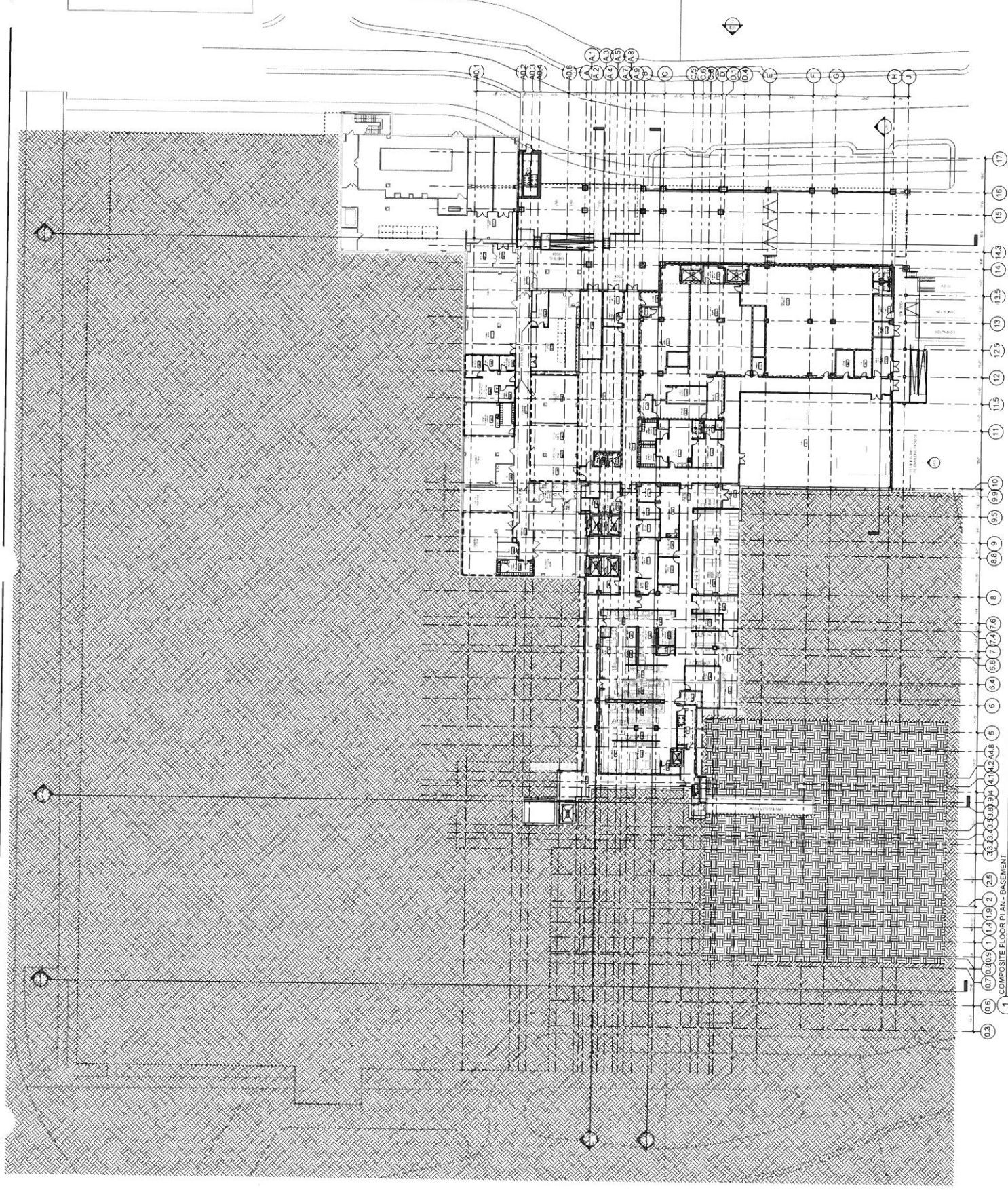


Catharine W. Cummer

Enclosure

NO.	DESCRIPTION	DATE
1	ISSUED FOR PERMIT	08/14/12
2	REVISION	08/14/12
3	REVISION	08/14/12
4	REVISION	08/14/12
5	REVISION	08/14/12
6	REVISION	08/14/12
7	REVISION	08/14/12
8	REVISION	08/14/12
9	REVISION	08/14/12
10	REVISION	08/14/12
11	REVISION	08/14/12
12	REVISION	08/14/12
13	REVISION	08/14/12
14	REVISION	08/14/12
15	REVISION	08/14/12
16	REVISION	08/14/12
17	REVISION	08/14/12
18	REVISION	08/14/12
19	REVISION	08/14/12
20	REVISION	08/14/12
21	REVISION	08/14/12
22	REVISION	08/14/12
23	REVISION	08/14/12
24	REVISION	08/14/12
25	REVISION	08/14/12
26	REVISION	08/14/12
27	REVISION	08/14/12
28	REVISION	08/14/12
29	REVISION	08/14/12
30	REVISION	08/14/12
31	REVISION	08/14/12
32	REVISION	08/14/12
33	REVISION	08/14/12
34	REVISION	08/14/12
35	REVISION	08/14/12
36	REVISION	08/14/12
37	REVISION	08/14/12
38	REVISION	08/14/12
39	REVISION	08/14/12
40	REVISION	08/14/12
41	REVISION	08/14/12
42	REVISION	08/14/12
43	REVISION	08/14/12
44	REVISION	08/14/12
45	REVISION	08/14/12
46	REVISION	08/14/12
47	REVISION	08/14/12
48	REVISION	08/14/12
49	REVISION	08/14/12
50	REVISION	08/14/12

NOT FOR CONSTRUCTION



1 COMPOSITE FLOOR PLAN - BASEMENT



Project:
**New Inpatient Tower
 and Surgery Expansion**
 2200 West Main Street, Suite 400
 Raleigh, North Carolina 27609

Prepared For:
Duke Raleigh Hospital
 2200 West Main Street, Suite 400
 Durham, North Carolina 27706

Contract: FPGC-10-01



HEALTHCARE DESIGN + ARCHITECTURE INC.



OHL ENGINEERS



AECOM

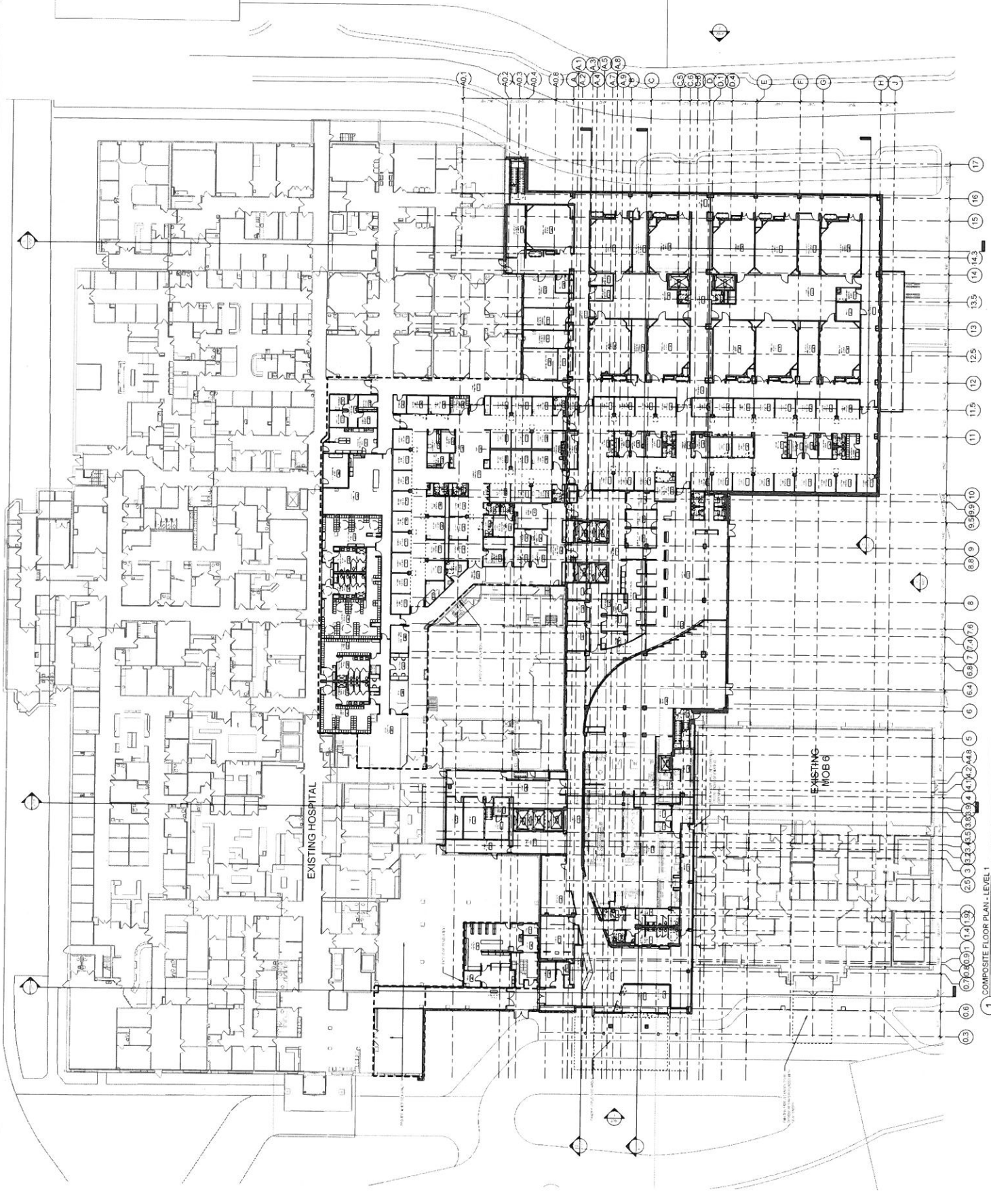
MEP Engineers
AECOM Affiliated
 10000 North Central Expressway, Suite 100
 Dallas, Texas 75243
 P.O. Box 10000
 Dallas, Texas 75243

NO.	DESCRIPTION	DATE
1	ISSUED FOR PERMIT	08/14/13
2	ISSUED FOR CONSTRUCTION	08/14/13
3	REVISION	08/14/13
4	REVISION	08/14/13
5	REVISION	08/14/13
6	REVISION	08/14/13
7	REVISION	08/14/13
8	REVISION	08/14/13
9	REVISION	08/14/13
10	REVISION	08/14/13
11	REVISION	08/14/13
12	REVISION	08/14/13
13	REVISION	08/14/13
14	REVISION	08/14/13
15	REVISION	08/14/13
16	REVISION	08/14/13
17	REVISION	08/14/13
18	REVISION	08/14/13
19	REVISION	08/14/13
20	REVISION	08/14/13
21	REVISION	08/14/13
22	REVISION	08/14/13
23	REVISION	08/14/13
24	REVISION	08/14/13
25	REVISION	08/14/13
26	REVISION	08/14/13
27	REVISION	08/14/13
28	REVISION	08/14/13
29	REVISION	08/14/13
30	REVISION	08/14/13

COMPOSITE FLOOR PLAN - LEVEL 1

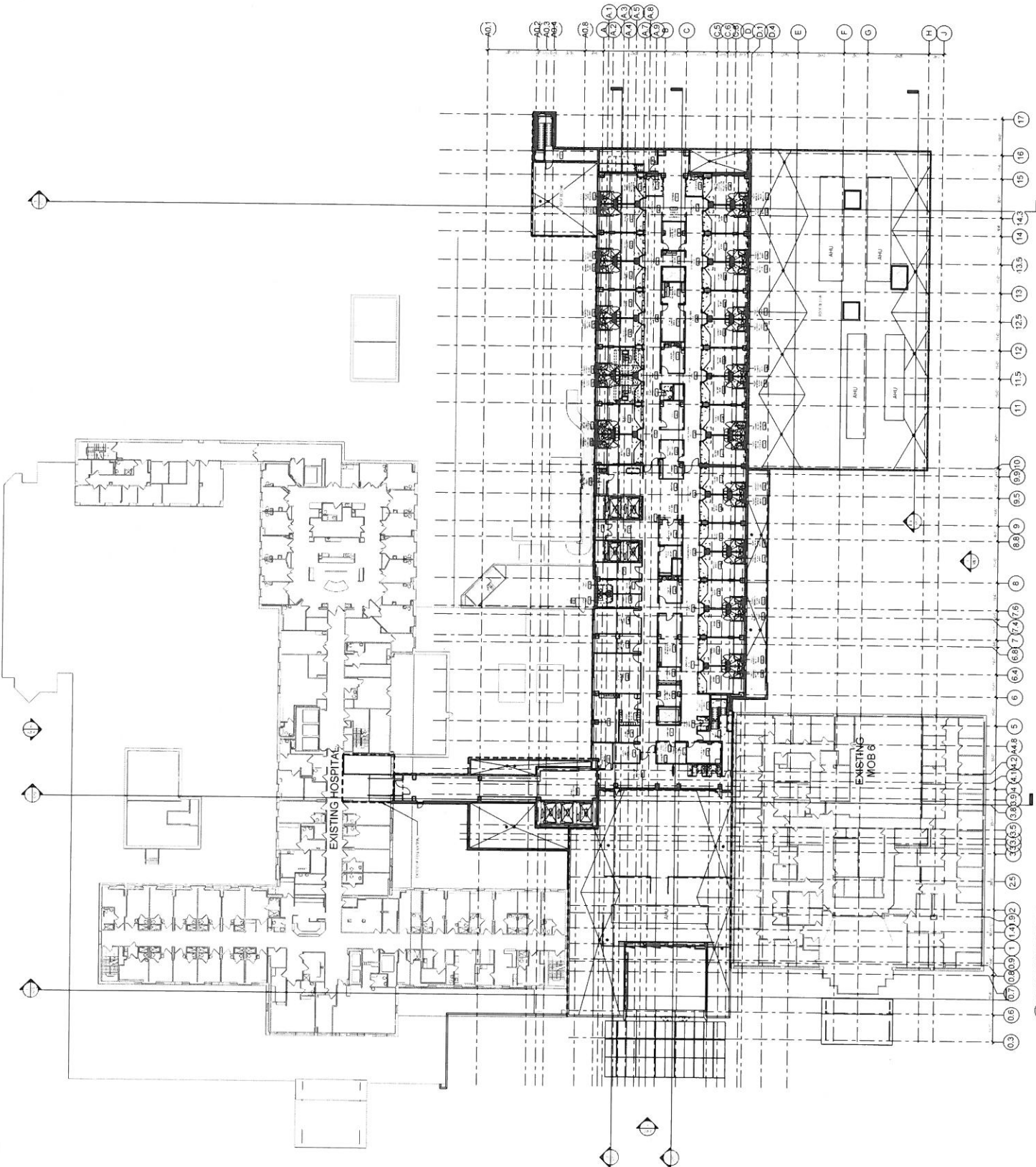
A101

NOT FOR CONSTRUCTION



1 COMPOSITE FLOOR PLAN - LEVEL 1

NO.	DESCRIPTION	DATE
1	ISSUED FOR PERMIT	08/14/13
2	ISSUED FOR CONSTRUCTION	08/14/13
3	ISSUED FOR CONSTRUCTION	08/14/13
4	ISSUED FOR CONSTRUCTION	08/14/13
5	ISSUED FOR CONSTRUCTION	08/14/13
6	ISSUED FOR CONSTRUCTION	08/14/13
7	ISSUED FOR CONSTRUCTION	08/14/13
8	ISSUED FOR CONSTRUCTION	08/14/13
9	ISSUED FOR CONSTRUCTION	08/14/13
10	ISSUED FOR CONSTRUCTION	08/14/13
11	ISSUED FOR CONSTRUCTION	08/14/13
12	ISSUED FOR CONSTRUCTION	08/14/13
13	ISSUED FOR CONSTRUCTION	08/14/13
14	ISSUED FOR CONSTRUCTION	08/14/13
15	ISSUED FOR CONSTRUCTION	08/14/13
16	ISSUED FOR CONSTRUCTION	08/14/13
17	ISSUED FOR CONSTRUCTION	08/14/13
18	ISSUED FOR CONSTRUCTION	08/14/13
19	ISSUED FOR CONSTRUCTION	08/14/13
20	ISSUED FOR CONSTRUCTION	08/14/13
21	ISSUED FOR CONSTRUCTION	08/14/13
22	ISSUED FOR CONSTRUCTION	08/14/13
23	ISSUED FOR CONSTRUCTION	08/14/13
24	ISSUED FOR CONSTRUCTION	08/14/13
25	ISSUED FOR CONSTRUCTION	08/14/13
26	ISSUED FOR CONSTRUCTION	08/14/13
27	ISSUED FOR CONSTRUCTION	08/14/13
28	ISSUED FOR CONSTRUCTION	08/14/13
29	ISSUED FOR CONSTRUCTION	08/14/13
30	ISSUED FOR CONSTRUCTION	08/14/13
31	ISSUED FOR CONSTRUCTION	08/14/13
32	ISSUED FOR CONSTRUCTION	08/14/13
33	ISSUED FOR CONSTRUCTION	08/14/13
34	ISSUED FOR CONSTRUCTION	08/14/13
35	ISSUED FOR CONSTRUCTION	08/14/13
36	ISSUED FOR CONSTRUCTION	08/14/13
37	ISSUED FOR CONSTRUCTION	08/14/13
38	ISSUED FOR CONSTRUCTION	08/14/13
39	ISSUED FOR CONSTRUCTION	08/14/13
40	ISSUED FOR CONSTRUCTION	08/14/13
41	ISSUED FOR CONSTRUCTION	08/14/13
42	ISSUED FOR CONSTRUCTION	08/14/13
43	ISSUED FOR CONSTRUCTION	08/14/13
44	ISSUED FOR CONSTRUCTION	08/14/13
45	ISSUED FOR CONSTRUCTION	08/14/13
46	ISSUED FOR CONSTRUCTION	08/14/13
47	ISSUED FOR CONSTRUCTION	08/14/13
48	ISSUED FOR CONSTRUCTION	08/14/13
49	ISSUED FOR CONSTRUCTION	08/14/13
50	ISSUED FOR CONSTRUCTION	08/14/13



1 COMPOSITE FLOOR PLAN - LEVEL 2



DukeHealth
 Project:
**New Inpatient Tower
 and Surgery Expansion**
 Raleigh, North Carolina 27609

Prepared For:
Duke Raleigh Hospital
 2200 West Main Street, Suite 400
 Durham, North Carolina 27706

Contract No. EPDC-3364



HEALTHCARE GROUP - A Division of, Inc.



Civil Engineers



MEP Engineers



Affiliated Engineers

MEP Engineers

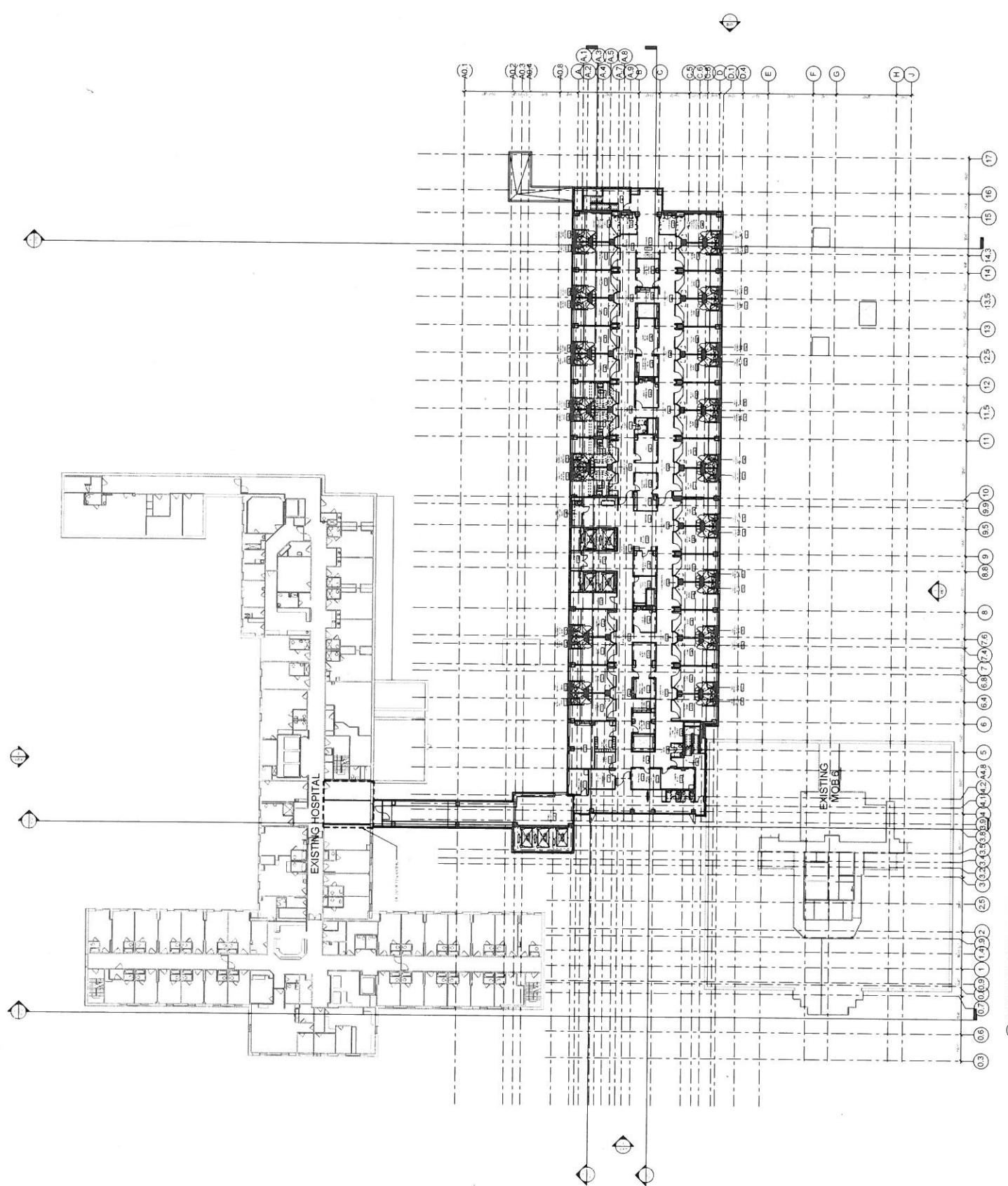
11111 North Carolina Street, Suite 100
 Raleigh, North Carolina 27609
 P: 919.733.1000
 F: 919.733.1000
 www.aei-engineers.com



NO.	REVISION	DATE
1	ISSUED FOR PERMIT	08/14/13
2	REVISED PER COMMENTS	08/21/13
3	REVISED PER COMMENTS	09/02/13
4	REVISED PER COMMENTS	09/02/13
5	REVISED PER COMMENTS	09/02/13
6	REVISED PER COMMENTS	09/02/13
7	REVISED PER COMMENTS	09/02/13
8	REVISED PER COMMENTS	09/02/13
9	REVISED PER COMMENTS	09/02/13
10	REVISED PER COMMENTS	09/02/13
11	REVISED PER COMMENTS	09/02/13
12	REVISED PER COMMENTS	09/02/13
13	REVISED PER COMMENTS	09/02/13
14	REVISED PER COMMENTS	09/02/13
15	REVISED PER COMMENTS	09/02/13
16	REVISED PER COMMENTS	09/02/13
17	REVISED PER COMMENTS	09/02/13
18	REVISED PER COMMENTS	09/02/13
19	REVISED PER COMMENTS	09/02/13
20	REVISED PER COMMENTS	09/02/13
21	REVISED PER COMMENTS	09/02/13
22	REVISED PER COMMENTS	09/02/13
23	REVISED PER COMMENTS	09/02/13
24	REVISED PER COMMENTS	09/02/13
25	REVISED PER COMMENTS	09/02/13
26	REVISED PER COMMENTS	09/02/13
27	REVISED PER COMMENTS	09/02/13
28	REVISED PER COMMENTS	09/02/13
29	REVISED PER COMMENTS	09/02/13
30	REVISED PER COMMENTS	09/02/13
31	REVISED PER COMMENTS	09/02/13
32	REVISED PER COMMENTS	09/02/13
33	REVISED PER COMMENTS	09/02/13
34	REVISED PER COMMENTS	09/02/13
35	REVISED PER COMMENTS	09/02/13
36	REVISED PER COMMENTS	09/02/13
37	REVISED PER COMMENTS	09/02/13
38	REVISED PER COMMENTS	09/02/13
39	REVISED PER COMMENTS	09/02/13
40	REVISED PER COMMENTS	09/02/13
41	REVISED PER COMMENTS	09/02/13
42	REVISED PER COMMENTS	09/02/13
43	REVISED PER COMMENTS	09/02/13
44	REVISED PER COMMENTS	09/02/13
45	REVISED PER COMMENTS	09/02/13
46	REVISED PER COMMENTS	09/02/13
47	REVISED PER COMMENTS	09/02/13
48	REVISED PER COMMENTS	09/02/13
49	REVISED PER COMMENTS	09/02/13
50	REVISED PER COMMENTS	09/02/13
51	REVISED PER COMMENTS	09/02/13
52	REVISED PER COMMENTS	09/02/13
53	REVISED PER COMMENTS	09/02/13
54	REVISED PER COMMENTS	09/02/13
55	REVISED PER COMMENTS	09/02/13
56	REVISED PER COMMENTS	09/02/13
57	REVISED PER COMMENTS	09/02/13
58	REVISED PER COMMENTS	09/02/13
59	REVISED PER COMMENTS	09/02/13
60	REVISED PER COMMENTS	09/02/13
61	REVISED PER COMMENTS	09/02/13
62	REVISED PER COMMENTS	09/02/13
63	REVISED PER COMMENTS	09/02/13
64	REVISED PER COMMENTS	09/02/13
65	REVISED PER COMMENTS	09/02/13
66	REVISED PER COMMENTS	09/02/13
67	REVISED PER COMMENTS	09/02/13
68	REVISED PER COMMENTS	09/02/13
69	REVISED PER COMMENTS	09/02/13
70	REVISED PER COMMENTS	09/02/13
71	REVISED PER COMMENTS	09/02/13
72	REVISED PER COMMENTS	09/02/13
73	REVISED PER COMMENTS	09/02/13
74	REVISED PER COMMENTS	09/02/13
75	REVISED PER COMMENTS	09/02/13
76	REVISED PER COMMENTS	09/02/13
77	REVISED PER COMMENTS	09/02/13
78	REVISED PER COMMENTS	09/02/13
79	REVISED PER COMMENTS	09/02/13
80	REVISED PER COMMENTS	09/02/13
81	REVISED PER COMMENTS	09/02/13
82	REVISED PER COMMENTS	09/02/13
83	REVISED PER COMMENTS	09/02/13
84	REVISED PER COMMENTS	09/02/13
85	REVISED PER COMMENTS	09/02/13
86	REVISED PER COMMENTS	09/02/13
87	REVISED PER COMMENTS	09/02/13
88	REVISED PER COMMENTS	09/02/13
89	REVISED PER COMMENTS	09/02/13
90	REVISED PER COMMENTS	09/02/13
91	REVISED PER COMMENTS	09/02/13
92	REVISED PER COMMENTS	09/02/13
93	REVISED PER COMMENTS	09/02/13
94	REVISED PER COMMENTS	09/02/13
95	REVISED PER COMMENTS	09/02/13
96	REVISED PER COMMENTS	09/02/13
97	REVISED PER COMMENTS	09/02/13
98	REVISED PER COMMENTS	09/02/13
99	REVISED PER COMMENTS	09/02/13
100	REVISED PER COMMENTS	09/02/13

COMPOSITE FLOOR
 PLAN - LEVEL 3

A103



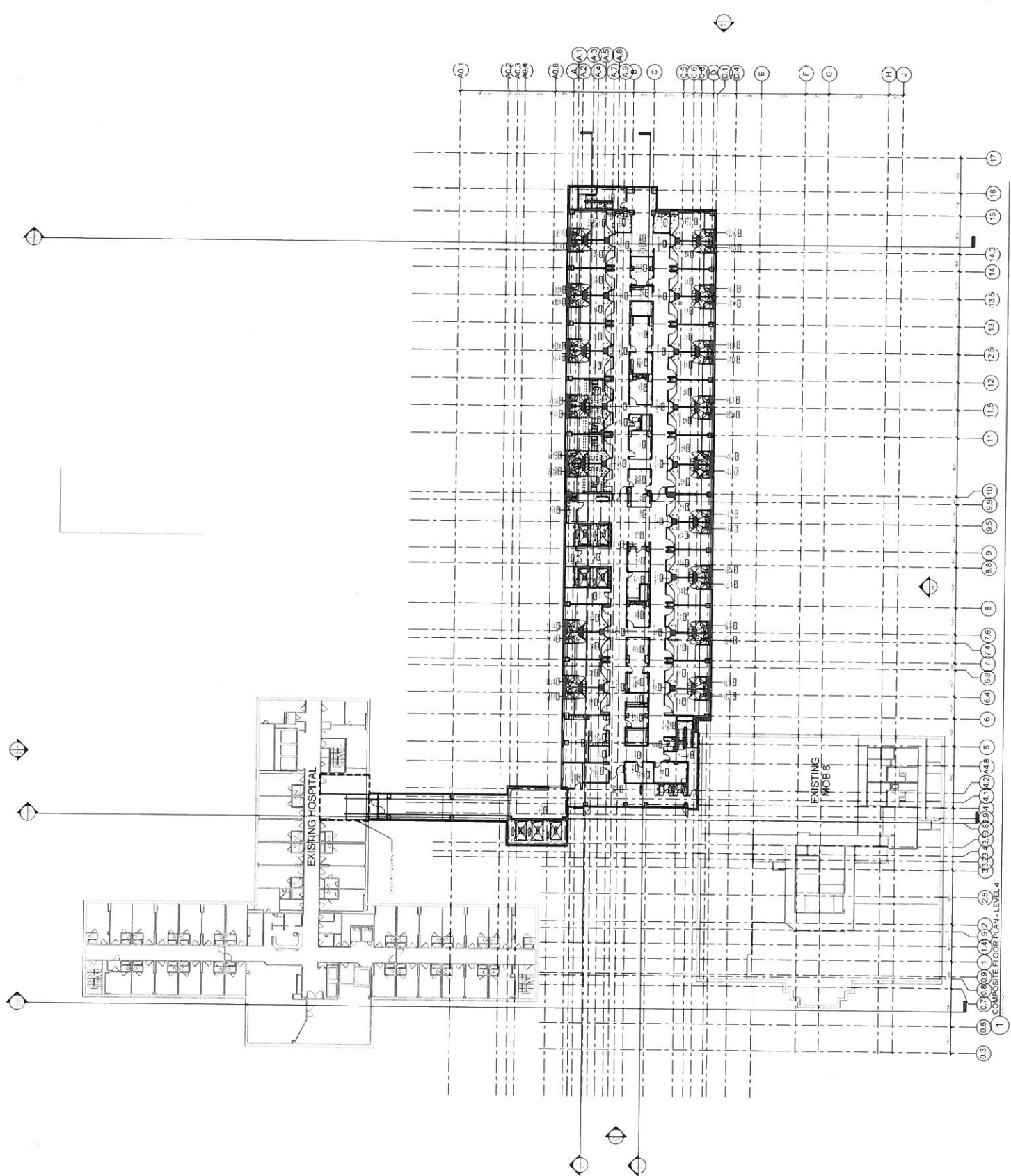
1 COMPOSITE FLOOR PLAN - LEVEL 3

NOT FOR CONSTRUCTION



NO.	DESCRIPTION	DATE
1	ISSUED FOR PERMIT	10/17/14
2	ISSUED FOR CONSTRUCTION	10/17/14
3	AS BUILT	10/17/14
4	REVISION	10/17/14
5	REVISION	10/17/14
6	REVISION	10/17/14
7	REVISION	10/17/14
8	REVISION	10/17/14
9	REVISION	10/17/14
10	REVISION	10/17/14
11	REVISION	10/17/14
12	REVISION	10/17/14
13	REVISION	10/17/14
14	REVISION	10/17/14
15	REVISION	10/17/14
16	REVISION	10/17/14
17	REVISION	10/17/14
18	REVISION	10/17/14
19	REVISION	10/17/14
20	REVISION	10/17/14
21	REVISION	10/17/14
22	REVISION	10/17/14
23	REVISION	10/17/14
24	REVISION	10/17/14
25	REVISION	10/17/14
26	REVISION	10/17/14
27	REVISION	10/17/14
28	REVISION	10/17/14
29	REVISION	10/17/14
30	REVISION	10/17/14
31	REVISION	10/17/14
32	REVISION	10/17/14
33	REVISION	10/17/14
34	REVISION	10/17/14
35	REVISION	10/17/14
36	REVISION	10/17/14
37	REVISION	10/17/14
38	REVISION	10/17/14
39	REVISION	10/17/14
40	REVISION	10/17/14
41	REVISION	10/17/14
42	REVISION	10/17/14
43	REVISION	10/17/14
44	REVISION	10/17/14
45	REVISION	10/17/14
46	REVISION	10/17/14
47	REVISION	10/17/14
48	REVISION	10/17/14
49	REVISION	10/17/14
50	REVISION	10/17/14
51	REVISION	10/17/14
52	REVISION	10/17/14
53	REVISION	10/17/14
54	REVISION	10/17/14
55	REVISION	10/17/14
56	REVISION	10/17/14
57	REVISION	10/17/14
58	REVISION	10/17/14
59	REVISION	10/17/14
60	REVISION	10/17/14
61	REVISION	10/17/14
62	REVISION	10/17/14
63	REVISION	10/17/14
64	REVISION	10/17/14
65	REVISION	10/17/14
66	REVISION	10/17/14
67	REVISION	10/17/14
68	REVISION	10/17/14
69	REVISION	10/17/14
70	REVISION	10/17/14
71	REVISION	10/17/14
72	REVISION	10/17/14
73	REVISION	10/17/14
74	REVISION	10/17/14
75	REVISION	10/17/14
76	REVISION	10/17/14
77	REVISION	10/17/14
78	REVISION	10/17/14
79	REVISION	10/17/14
80	REVISION	10/17/14
81	REVISION	10/17/14
82	REVISION	10/17/14
83	REVISION	10/17/14
84	REVISION	10/17/14
85	REVISION	10/17/14
86	REVISION	10/17/14
87	REVISION	10/17/14
88	REVISION	10/17/14
89	REVISION	10/17/14
90	REVISION	10/17/14
91	REVISION	10/17/14
92	REVISION	10/17/14
93	REVISION	10/17/14
94	REVISION	10/17/14
95	REVISION	10/17/14
96	REVISION	10/17/14
97	REVISION	10/17/14
98	REVISION	10/17/14
99	REVISION	10/17/14
100	REVISION	10/17/14

NOT FOR CONSTRUCTION





DukeHealth
 Project:
**New Inpatient Tower
 and Surgery Expansion**
 2200 West Main Street, Suite 600
 Durham, North Carolina 27705

Prepared by:
Duke Raleigh Hospital
 2200 West Main Street, Suite 600
 Durham, North Carolina 27705

Contract No. RFD03-044



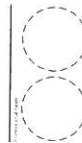
Hickory, North Carolina, NC



CofE Engineers
 10000 North Carolina Highway 101
 Raleigh, North Carolina 27615
 P: 919.733.8800
 F: 919.733.8801



A11 Affiliated Engineers
 MEP Engineers
 10000 North Carolina Highway 101
 Raleigh, North Carolina 27615
 P: 919.733.8800
 F: 919.733.8801

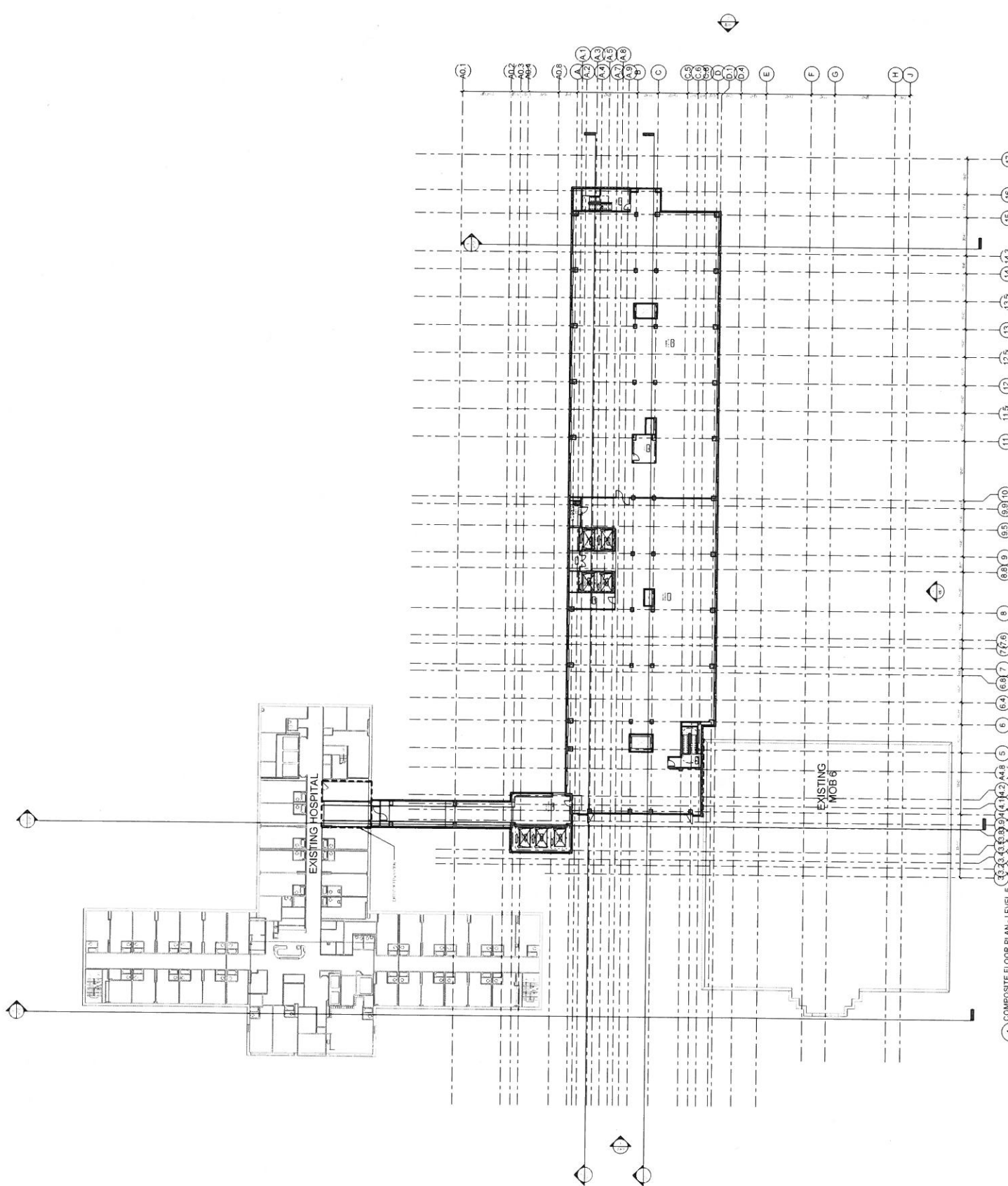


NO.	REVISION	DATE
1		
2		
3		
4		
5		
6		
7		
8		
9		
10		
11		
12		
13		
14		
15		
16		
17		
18		
19		
20		
21		
22		
23		
24		
25		
26		
27		
28		
29		
30		
31		
32		
33		
34		
35		
36		
37		
38		
39		
40		
41		
42		
43		
44		
45		
46		
47		
48		
49		
50		
51		
52		
53		
54		
55		
56		
57		
58		
59		
60		
61		
62		
63		
64		
65		
66		
67		
68		
69		
70		
71		
72		
73		
74		
75		
76		
77		
78		
79		
80		
81		
82		
83		
84		
85		
86		
87		
88		
89		
90		
91		
92		
93		
94		
95		
96		
97		
98		
99		
100		

COMPOSITE FLOOR PLAN - LEVEL 5

A105

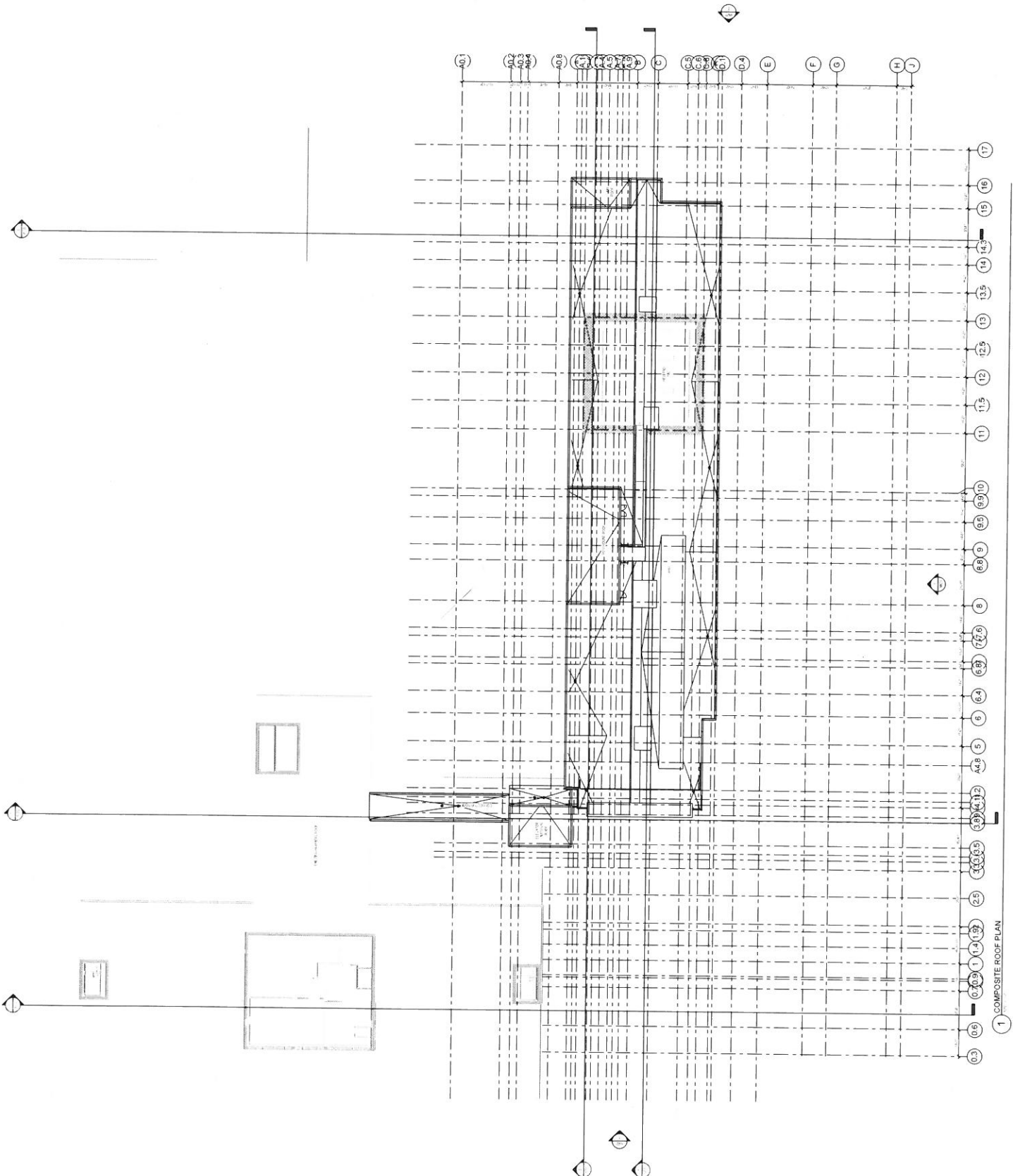
NOT FOR CONSTRUCTION



1 COMPOSITE FLOOR PLAN - LEVEL 5



NO.	REVISION	DATE
1	ISSUED FOR PERMIT	08/14/13
2	ISSUED FOR CONSTRUCTION	08/14/13
3	ISSUED FOR CONSTRUCTION	08/14/13
4	ISSUED FOR CONSTRUCTION	08/14/13
5	ISSUED FOR CONSTRUCTION	08/14/13
6	ISSUED FOR CONSTRUCTION	08/14/13
7	ISSUED FOR CONSTRUCTION	08/14/13
8	ISSUED FOR CONSTRUCTION	08/14/13
9	ISSUED FOR CONSTRUCTION	08/14/13
10	ISSUED FOR CONSTRUCTION	08/14/13
11	ISSUED FOR CONSTRUCTION	08/14/13
12	ISSUED FOR CONSTRUCTION	08/14/13
13	ISSUED FOR CONSTRUCTION	08/14/13
14	ISSUED FOR CONSTRUCTION	08/14/13
15	ISSUED FOR CONSTRUCTION	08/14/13
16	ISSUED FOR CONSTRUCTION	08/14/13
17	ISSUED FOR CONSTRUCTION	08/14/13
18	ISSUED FOR CONSTRUCTION	08/14/13
19	ISSUED FOR CONSTRUCTION	08/14/13
20	ISSUED FOR CONSTRUCTION	08/14/13
21	ISSUED FOR CONSTRUCTION	08/14/13
22	ISSUED FOR CONSTRUCTION	08/14/13
23	ISSUED FOR CONSTRUCTION	08/14/13
24	ISSUED FOR CONSTRUCTION	08/14/13
25	ISSUED FOR CONSTRUCTION	08/14/13
26	ISSUED FOR CONSTRUCTION	08/14/13
27	ISSUED FOR CONSTRUCTION	08/14/13
28	ISSUED FOR CONSTRUCTION	08/14/13
29	ISSUED FOR CONSTRUCTION	08/14/13
30	ISSUED FOR CONSTRUCTION	08/14/13
31	ISSUED FOR CONSTRUCTION	08/14/13
32	ISSUED FOR CONSTRUCTION	08/14/13
33	ISSUED FOR CONSTRUCTION	08/14/13
34	ISSUED FOR CONSTRUCTION	08/14/13
35	ISSUED FOR CONSTRUCTION	08/14/13
36	ISSUED FOR CONSTRUCTION	08/14/13
37	ISSUED FOR CONSTRUCTION	08/14/13
38	ISSUED FOR CONSTRUCTION	08/14/13
39	ISSUED FOR CONSTRUCTION	08/14/13
40	ISSUED FOR CONSTRUCTION	08/14/13
41	ISSUED FOR CONSTRUCTION	08/14/13
42	ISSUED FOR CONSTRUCTION	08/14/13
43	ISSUED FOR CONSTRUCTION	08/14/13
44	ISSUED FOR CONSTRUCTION	08/14/13
45	ISSUED FOR CONSTRUCTION	08/14/13
46	ISSUED FOR CONSTRUCTION	08/14/13
47	ISSUED FOR CONSTRUCTION	08/14/13
48	ISSUED FOR CONSTRUCTION	08/14/13
49	ISSUED FOR CONSTRUCTION	08/14/13
50	ISSUED FOR CONSTRUCTION	08/14/13
51	ISSUED FOR CONSTRUCTION	08/14/13
52	ISSUED FOR CONSTRUCTION	08/14/13
53	ISSUED FOR CONSTRUCTION	08/14/13
54	ISSUED FOR CONSTRUCTION	08/14/13
55	ISSUED FOR CONSTRUCTION	08/14/13
56	ISSUED FOR CONSTRUCTION	08/14/13
57	ISSUED FOR CONSTRUCTION	08/14/13
58	ISSUED FOR CONSTRUCTION	08/14/13
59	ISSUED FOR CONSTRUCTION	08/14/13
60	ISSUED FOR CONSTRUCTION	08/14/13
61	ISSUED FOR CONSTRUCTION	08/14/13
62	ISSUED FOR CONSTRUCTION	08/14/13
63	ISSUED FOR CONSTRUCTION	08/14/13
64	ISSUED FOR CONSTRUCTION	08/14/13
65	ISSUED FOR CONSTRUCTION	08/14/13
66	ISSUED FOR CONSTRUCTION	08/14/13
67	ISSUED FOR CONSTRUCTION	08/14/13
68	ISSUED FOR CONSTRUCTION	08/14/13
69	ISSUED FOR CONSTRUCTION	08/14/13
70	ISSUED FOR CONSTRUCTION	08/14/13
71	ISSUED FOR CONSTRUCTION	08/14/13
72	ISSUED FOR CONSTRUCTION	08/14/13
73	ISSUED FOR CONSTRUCTION	08/14/13
74	ISSUED FOR CONSTRUCTION	08/14/13
75	ISSUED FOR CONSTRUCTION	08/14/13
76	ISSUED FOR CONSTRUCTION	08/14/13
77	ISSUED FOR CONSTRUCTION	08/14/13
78	ISSUED FOR CONSTRUCTION	08/14/13
79	ISSUED FOR CONSTRUCTION	08/14/13
80	ISSUED FOR CONSTRUCTION	08/14/13
81	ISSUED FOR CONSTRUCTION	08/14/13
82	ISSUED FOR CONSTRUCTION	08/14/13
83	ISSUED FOR CONSTRUCTION	08/14/13
84	ISSUED FOR CONSTRUCTION	08/14/13
85	ISSUED FOR CONSTRUCTION	08/14/13
86	ISSUED FOR CONSTRUCTION	08/14/13
87	ISSUED FOR CONSTRUCTION	08/14/13
88	ISSUED FOR CONSTRUCTION	08/14/13
89	ISSUED FOR CONSTRUCTION	08/14/13
90	ISSUED FOR CONSTRUCTION	08/14/13
91	ISSUED FOR CONSTRUCTION	08/14/13
92	ISSUED FOR CONSTRUCTION	08/14/13
93	ISSUED FOR CONSTRUCTION	08/14/13
94	ISSUED FOR CONSTRUCTION	08/14/13
95	ISSUED FOR CONSTRUCTION	08/14/13
96	ISSUED FOR CONSTRUCTION	08/14/13
97	ISSUED FOR CONSTRUCTION	08/14/13
98	ISSUED FOR CONSTRUCTION	08/14/13
99	ISSUED FOR CONSTRUCTION	08/14/13
100	ISSUED FOR CONSTRUCTION	08/14/13



1 COMPOSITE ROOF PLAN

NOT FOR CONSTRUCTION

Effective January 01, 2017, this license is issued to
Duke University Health System, Inc.

to operate a hospital known as
Duke Raleigh Hospital
located in Raleigh, North Carolina, Wake County.

This license is issued subject to the statutes of the
State of North Carolina, is not transferable and shall remain
in effect until amended by the issuing agency.

Facility ID: 923421

License Number: H0238

Bed Capacity: 186

General Acute 186

Dedicated Inpatient Surgical Operating Rooms: 0

Dedicated Ambulatory Surgical Operating Rooms: 0

Shared Surgical Operating Rooms: 15

Dedicated Endoscopy Rooms: 3