

North Carolina Department of Health and Human Services
Division of Health Service Regulation
Acute and Home Care Licensure and Certification Section
Site: 1205 Umstead Drive
Raleigh, North Carolina 27603
Mailing: 2712 Mail Service Center
Raleigh, North Carolina 27699-2712
Telephone: (919) 855-4620 Fax: (919) 715-8476

For Official Use Only	
License	HOS0386
Medicare #:	341530
Computer:	953871
PC	Date

HOSPICE AGENCY
2010 Annual Data Supplement to Licensure Application
(Reporting 2009 Fiscal Year Data)

SECTION A: Identification and Contact Information

License No: HOS0386

Legal Identity of Applicant: Hospice of Henderson County, Inc.
Four Seasons Compassion for Life

Agency d/b/a: Four Seasons Hospice and Palliative Care

Agency Site Address: 571 South Allen Road
Flat Rock, NC 28731

County: Henderson

Agency E-Mail: _____
(If Applicable)

Agency Web Site: www.fourseasonschl.org
(If Applicable)

Agency Phone #: (828)692-6178

Agency Fax: (828)692-6764

Reporting Period* 10-1-2008 | 9-30-2009

*Data is requested for the twelve-month period beginning on October 1, 2008 and ending on September 30, 2009 (FY2009). If your agency has a fiscal year end of June, July, August, September or October, you may use your data from your actual fiscal year end, as long as you do not report more than 12 months worth of data. If your agency or facility was not open for this entire twelve-month period, please specify the time period covered in this report, in the space provided above.

AUTHENTICATING SIGNATURE: I certify the information submitted in this Data Supplement is accurate.

Typed Name: ELIZABETH WHITTEN Title: VP Business Operations
Signature: *Elizabeth Whitten* Date: 11/24/2009

Name of the person to contact for any questions regarding this form:
Name: Frances Bowers Telephone: 828-233-0391
E-Mail: ddaws@nehospice.com fbowers@fourseasonschl.org

For questions, contact The Carolinas Center for Hospice and End of Life Care at (919) 677-4113, or the Association for Home & Hospice Care at (919) 848-3450.

SECTION B: Program Demographics

1. **AGENCY TYPE** (Select one based on Medicare Filing Status).

- Free Standing
- Hospital Based
- Home Health Based
- Nursing Home Based

2. **MEMBERSHIPS** Are you a member of:

- A State Hospice Association? Yes No
If yes, which state(s)? North Carolina
- State Home Care Association? Yes No
- NHPCO? Yes No
- Member # 551127
- NAHC? Yes No

3. **CENSUS AS OF 9/30/2009**

- 1-15
- 16-30
- 31-49
- 50-99
- 100+

(If zero please give explanation)

4. **MULTIPLE LOCATIONS**

- Yes No

If so, how many are reported together in this survey?

5. **FISCAL YEAR**

Last month of your fiscal year? September

6. **MEDICARE CERTIFICATION**

Are you Medicare Certified?

- Yes No

Medicare Provider No. 341530

7. **ACCREDITATION STATUS**

Accredited by:

- ACHC
- CHAP
- TJC
- DNV
- Other
- Not accredited

8. **BUDGET SIZE**

- <\$500,000
- \$500,001 - \$999,999
- \$1,000,000 - \$1,999,999
- \$2,000,000 - \$3,999,999
- \$4,000,000 - \$5,999,999
- >\$6,000,000

9. **OWNERSHIP**

- Voluntary (not for profit)
- Proprietary
- Government

10. **INPATIENT FACILITIES & RESIDENTIAL FACILITIES**

a. Does your hospice operate one or more dedicated hospice facilities or units? A dedicated facility or unit consists of one or more beds that are owned or leased by the hospice, staffed by hospice staff, and have major policies/procedures set by the hospice.

- No—Please *SKIP* Part 2 (pages 12-13).
- Yes—Please *COMPLETE* Part 2 (pages 12-13)

b. No. Licensed Inpatient Beds 19

No. Licensed Residential Beds 0

REPORT FACILITY DATA FOR SECTIONS "C" THROUGH "J" (EXCLUDING SECTION F) ON YOUR MAIN LICENSE. IF YOU HAVE A SEPARATE LICENSE FOR YOUR FACILITY, COMPLETE PART 2 ONLY ON THE FACILITY LICENSE.

For questions, contact *The Carolinas Center for Hospice and End of Life Care* at (919) 677-4113, or the *Association for Home & Hospice Care* at (919) 848-3450.

SECTION C. Patient Volume:

1. AVERAGE DAILY CENSUS AND LENGTH OF STAY: Please review the definitions and calculation examples carefully before completing the following questions. (NOTE: For FY2009 count multiple admissions and discharges for the same patient as discrete events. EXAMPLE: A patient is discharged after 30 days, is readmitted and dies after 5 days. This patient is counted as 2 separate admissions and 2 discharges).

a. **Average Length of Stay (ALOS)** 32.21
 Divide the total days of care provided to died/discharged patients from FY2009 by the total number of patients that died/discharged in FY2009. EXAMPLE: 100 patients died or were discharged from 10/01/07 to 09/30/08. Their total patient days from admission to died/discharge were 4200. ALOS = 4200/100 = 42 days.

b. **Median Length of Stay (MLOS)** 14
 The midpoint for all died/discharged patients from FY2009 (same populations as for ALOS, above). Half of the patients have a LOS longer than the median and half of the patients have a LOS shorter than the median. Calculate the MLOS by arranging the LOS scores for all patients from lowest to highest (1, 2, 3, ...). Find the score that falls in the exact middle of the list. This is the median length of stay.
 EXAMPLE 1 - Even number of patients. You have six patients that stayed the following number of days: 11, 2, 9, 5, 8, 4. Arrange the LOS scores from lowest to highest: 2, 4, 5, 8, 9, 11. The median will fall between the third & fourth number; in this case, the median falls between 5 and 8. Add 5 + 8, and divide by 2. (5+8)/2 = 6.5. Therefore, 6.5 is your median.
 EXAMPLE 2- Odd number of patients. You have five patients with the following number of days: 8, 22, 3, 10, 7. Arrange the LOS scores from lowest to highest (3, 7, 8, 10, 22). The median length of stay is in the middle - 8 days.

c. **Average Daily Census (ADC)** 230.9
 ADC is computed as follows: Take all patient days for a given period and divide by the number of days in that period. EXAMPLE: You provided a total of 12,775 patient days for all levels of care from the reporting period. 12,775 divided by 366 days equals an ADC of 35 patients per day.

d. **Total Number of Deaths (must agree with the total number of deaths in sections D, E, and I)** 823
 Number of Patients Who Died in ≤ 7 days (stays of 7 days or fewer) 325
 {Include the number of deaths for patients who died from the reporting period with stays of 7 days or fewer.}
 Number of Patients Who Died in > 180 days (stays of 180 days or more) 86
 {Include the number of deaths for all patients who died from the reporting period with stays of 180 or more consecutive days.}

2. LEVEL OF CARE AND PAY SOURCE: Please provide patient days for all patients served, including those in nursing facilities, from FY2009. Patients who change primary pay source during this time should be reported for each pay source with the number of days of care recorded for each pay source (count each day only once even if there is more than one pay source on any given day). The # of patients served may be higher than the actual number of patients served due to a change in pay source. Days of care should agree to days of care in Section I.

Hospice Payment Source	# of Patients Served	Days of Routine Home Care	Days of Inpatient Care	Days of Respite Care	Days of Continuous Care	Total Patient Care Days
Hospice Medicare	1041	74,608	3,847	191	61	78,707
Hospice Medicaid	42	3,241	253	4	0	3,498
Private Insurance	28	1,085	129	3	1	1,218
Self Pay*	14	641	71	8	0	712
Other**	8	264	0	0	0	264
Totals:	<u>1,133</u>	<u>79,839</u>	<u>4,300</u>	<u>198</u>	<u>62</u>	<u>84,499</u>

* Self Pay included charity/indigent care and foundation help; does NOT include any commercial or government 3rd party payor.

** Other Payment Sources (to be used rarely) may include but are not limited to VA, Workers Comp, Home Health Benefit (only for non-Medicare Certified agencies).

For questions, contact *The Carolinus Center for Hospice and End of Life Care* at (919) 677-4113, or the *Association for Home & Hospice Care* at (919) 848-3450.

SECTION C. Patient Volume- continued

3. REFERRALS

Total number of referrals received during FY2009: 1074

Do not include requests for general information as referrals. One or more of the following defines a referral:

- Contact from a physician, case manager, discharge planner, health care organization, or equivalent that requests assessment of a patient for admission;
- Contact from a patient or their family or friend, that identifies a specific patient who may need hospice care. This definition of a referral is intentionally broad and is intended to capture all calls and contacts that identify a potential hospice patient.

SECTION D. Number Of Unduplicated Admissions And Deaths By Location: Please report the number of new admissions and deaths in each location during FY2009. For admissions, use location on the first day of care. Patient can start in one location and finish at another location. **Number of admissions should agree to the # of admissions in Sections E, G and I. Number of deaths should agree to the # of deaths in Sections C. and I.**

New Unduplicated Admissions: Only include patients admitted for the first time during FY2009. Count each patient only one time. This means patients who were admitted multiple times during FY2009 are counted only once. Do not include patients carried over from the prior reporting period.

Deaths: Include all patients who died during FY2009 regardless of date of admission.

Location	Number of New Unduplicated Admissions	# of Deaths
Home - Private residence of either the patient or the caregiver	308	125
Nursing Facility - A licensed long term care facility providing nursing and supportive services	206	189
Hospice Unit - An inpatient unit (one or more beds) operated by a hospice, and located in a facility operated by another entity (includes hospital, nursing home, and other).	0	0
Hospital - An acute care facility not operated by the hospice (may be a floating or scattered bed contract).	48	23
Free Standing Hospice Inpatient Facility or Residence - An inpatient facility and/or residence operated entirely by a hospice.	261	428
Residential Care Setting - A residential care facility that is not run by the hospice (assisted living, boarding home, rest home, shelter, etc.)	94	58
Totals:	917	823

For questions, contact *The Carolinas Center for Hospice and End of Life Care* at (919) 677-4113, or the *Association for Home & Hospice Care* at (919) 848-3450.

SECTION E. Number Of Patients By Diagnosis: Please provide data for FY2009, regardless of payment source. Data provided should be based only on patient primary diagnosis. The examples listed in the table are not comprehensive and are provided only as a guide. Use the following definitions for the categories in the table.

New (Unduplicated) Admissions: Only include patients admitted for the first time during FY2009. Count each patient only one time. This means patients who were admitted multiple times in FY2009 are counted only once. Do not count patients carried over from the prior period.

Deaths: Include all patients who died in FY2009, regardless of date of admission.

Live Discharges: Include all live discharges that occurred during FY2009, regardless of when the admission occurred. Count multiple live discharges for the same patient as discrete events. (EXAMPLE: A patient discharges alive, is later readmitted and discharges alive again. The patient is counted as 2 separate discharges.)

Patient Days: Include the total number of days services were provided for all patients who died or were discharged in FY2009. Count all days for each patient, including days in years other than FY2009.

Number of Admissions must equal Sections D, G and I. Number of deaths must equal Sections C, D and I.

Primary Diagnosis	Number of New (Unduplicated) Admissions	Number of Deaths	Number of Live Discharges	*Patient Days for Patients Who Died or Were Discharged
Cancer Include all cancers	251	243	14	5,957
Heart All patients with heart disease including CHF & primary sclerotic heart disease	136	117	17	3,657
Dementia Include Alzheimers, vascular dementia, etc.	182	151	25	8,140
Lung COPD (emphysema) and other non-cancer lung diseases	114	100	7	3,232
Kidney End stage renal disease	28	24	2	846
Liver Cirrhosis, advanced hepatitis, and other non-cancer liver disease	16	18	2	319
HIV All AIDS and HIV related conditions	1	0	0	0
Stroke/Coma	60	54	6	1,237
ALS	2	2	1	17
Other Motorneuron Include Parkinsons, Huntingtons, MS	30	24	3	1,848
Debility Unspecified Include terminal debility, failure to thrive	54	45	8	2,733
All Others Please specify	43	45	3	1,357
Totals	917	823	88	29,343

*Please report total days for live discharges 7,786.

For questions, contact *The Carolinas Center for Hospice and End of Life Care* at (919) 677-4113, or the *Association for Home & Hospice Care* at (919) 848-3450.

SECTION F. Productivity and Cost of Care. Complete Section F1 using the following definitions and calculation instructions.

Direct Care: Includes all activities involved in care delivery, including visits, telephone calls, charting, team meetings, travel for patient care, and arrangement or coordination of care. When a supervisor provides direct care, estimate the time involved in direct care as distinct from supervision of other staff or program activities.

PRN Employees: also called "per diem" employees, are called upon to work when necessary without a commitment to work a specific number of hours for your agency. They may be available all of the time or they may be only available for certain days or times. However, they are not the same as part-time employees, even though they may routinely work on the same day or number of hours each week. A part-time employee is expected to work a certain number of hours each week, but there is no expectation for number of hours for a PRN employee.

Separation: a voluntary or involuntary termination of employment.

FTE: One full time equivalent (FTE) is 2080 hours per year (40 hours per week times 52 weeks). Provide actual FTEs utilized, not the budgeted number of FTEs.

Calculations: Total FTEs: Divide paid hours by 2080 (may include up to 2 decimal points). Include vacation, sick leave, education leave, and all other time normally compensated by the agency. Categorize your FTEs as you do for the Medicare Hospice Cost Report. Include hourly, salaried and contract staff.

Home Hospice FTE's: Includes all staff involved in delivery of hospice care to patients in all settings (home, hospital, nursing home, residential facility) except patients in a dedicated hospice facility or unit.

1. STAFFING BY DISCIPLINE – staffing information for FY2009 (Do not include inpatient staff)

	Staffing by Discipline	Total Home Hospice FTE's	Total # of Employees on last day of FY (no PRN)	Total PRN Employees (average for year if number fluctuates)	Total Separations (all causes, no PRN)
1	Nursing – Direct Clinical Include RNs, and LPNs. Include on-call and after hours care. Do not include supervisors or other clinical administrators unless a portion of their time is spent in direct care*.	35.49	40	9	7
2	Social Services Include medical social services staff as defined by CMS for the cost report. Do not include bereavement counselors.	7.02	8	1	2
3	Hospice Aides	17.21	20	4	1
4	Physicians – Paid Include medical directors and other physicians providing direct care to patients and participating in clinical support. Exclude volunteer physicians.	2.79	3	—	—
5	Physicians – Volunteer	—	—	—	—
6	Chaplains	5.04	5	1	—
7	Other Clinical Include any paid staff in addition to those captured above who provide direct care to patients or families. Include nurse practitioners, therapists, and dietitians. Do not include volunteers.	—	—	—	—
8	Clinical Includes all direct care time (above 7 rows). This is the total of Nursing-Direct clinical, Social Services, Aides, Physicians, Bereavement Counselors & Other Clinical.	67.55	76	15	8

For questions, contact *The Carolinas Center for Hospice and End of Life Care* at (919) 677-4113, or the *Association for Home & Hospice Care* at (919) 848-3450.

9	Nursing – Indirect Clinical Include intake staff, educators, quality improvement, managers, and liaison nurses with clinical background, but who do not provide direct care. RN's and LPN's only.	17.17	19	1	2
10	Bereavement Include all paid staff providing bereavement services, including pre-death grief support. <i>Do not include volunteers.</i>	5.44	8	1	0
11	Non-Clinical Include all administrative and general staff.	35.40	40	1	3
12	Total (add rows 8-11) Include <u>all</u> staff time. This is the total of Clinical, Indirect Clinical, Bereavement and Non-Clinical.	125.56	143	18	13

2. VISITS BY DISCIPLINE Please provide the following information for FY2009. Count ALL visits, regardless of setting (hospital, nursing home, residential facility, etc.). If you own/operate a hospice, inpatient or residential facility – **do not include visits to your facility here.**

Discipline	Total Visits
Nursing Include visits made by RNs and LPs. Include on-call and after hours care visits.	20,390
Social Services Include visits made by medical social services staff as defined by CMS for the cost report. <i>Do not include bereavement counselors.</i>	3,458
Hospice Aides	17,045
Physicians – Paid Include visits made by medical directors and other physicians providing direct care to patient. <i>Exclude volunteer physicians.</i>	5,100
Physicians – Volunteer	—
Chaplains	3,324
Other Clinical Include any paid staff in addition to those captured above who make visits as part of direct care to patients or families. Include therapists, nurse practitioners, and dieticians. <i>Do not include volunteers or bereavement staff.</i>	1,594
Bereavement	1,146

3. CASELOADS: Please provide average caseloads (**NOT RANGE**) for the following positions for FY2009.

	Caseload*
Primary Nurse, Nurse Case Manager <i>RN with primary responsibility for the patient's care</i>	12
Social Worker <i>SW with medical social services duties, as defined by CMS</i>	31
Hospice Aide	6
Chaplain	40

* Caseload is the number of patients for which a staff member has responsibility or to which she/he is assigned at a time. Some disciplines, such as bereavement counselors and social workers, may be responsible for contacting all patients and families, but visit only a proportion of them. In this situation, include **ONLY** those patients who receive visits in determining caseloads.

For questions, contact *The Carolinas Center for Hospice and End of Life Care* at (919) 677-4113, or the *Association for Home & Hospice Care* at (919) 848-3450.

4. ADMISSION MODEL: Does your agency utilize dedicated admission nurses for a majority of the initial admission visits? Yes No

SECTION G. Patient Demographics for New (Unduplicated) Admissions

Only include patients admitted for the first time during FY2009. Patients who are admitted multiple times are counted only once.

1. GENDER

a. Female	<u>520</u>
b. Male	<u>397</u>
Total	<u>917</u>

2. AGE

Use patient's age on the first day of Admission in FY2009.

a. 0-17	<u>1</u>
b. 18-34	<u>3</u>
c. 35-64	<u>109</u>
d. 65-74	<u>149</u>
e. 75-84	<u>261</u>
f. 85+	<u>394</u>
Total	<u>917</u>

CDC pediatric categories complete, If possible:

g. <1	<u>-</u>
h. 1-4	<u>-</u>
i. 5-14	<u>1</u>
j. 15-24	<u>2</u>
k. 25-34	<u>1</u>
Total 0-34	<u>4</u>

3. ETHNICITY all patients should be categorized as Hispanic or non-Hispanic, and further categorized by Race below.

a. Hispanic (as defined by U.S. Census Bureau)	<u>2</u>
b. Non-Hispanic	<u>915</u>
Total (should equal Race total)	<u>917</u>

4. RACE

a. American Indian or Alaskan Native	<u>-</u>
b. Black or African American	<u>34</u>
c. Asian, Hawaiian or Other Pacific Islander	<u>2</u>
d. White	<u>860</u>
e. Some other race or races	<u>21</u>
Total (should equal Ethnicity total)	<u>917</u>

Number of admissions should agree to the number of admissions in Sections D, E and I.

For questions, contact *The Carolinas Center for Hospice and End of Life Care* at (919) 677-4113, or the *Association for Home & Hospice Care* at (919) 848-3450.

SECTION H. Processes Of Care

I. DIRECT PATIENT CARE VOLUNTEERS: Provide the following information during FY2009.

Number of Volunteers: The number of volunteers should be an unduplicated count, with no individuals included in more than one category, even if they engaged in more than one type of volunteer service. Some volunteers participate in multiple types of activities, such as spending time with patients *and* assisting with fundraising mailings. If any of the activities performed by a volunteer involved direct contact with patients or families, the volunteer should be counted in the direct care category, regardless of the proportion of time spent providing direct care.

Volunteer Hours: For those volunteers who contributed hours in more than one volunteer service category, provide the number of hours for each category.

Volunteers	Number	Hours	Visits
Direct Patient Care Volunteers - Report the number and the hours for volunteers who visit patients and families. Also note the number of patient visits done by these volunteers (do not include phone calls as a visit).	218	11,955	10,412
Clinical Support Volunteers - Report the number/hours for volunteers who provide patient care support. These volunteers are combined with Direct Patient Care Volunteers, to meet the Medicare Condition of Participation regarding 5% volunteer hours. <i>Medicare interpretive guidelines define administrative volunteers in this context as supporting patient care activities (e.g., clerical duties), rather than general support (e.g., fundraising).</i>	87	5,242	N/A
General Support Volunteers - Report the number and the hours for volunteers who provide general support, such as those who help with fundraising and members of the board of directors. These volunteers <i>do not contribute to the 5% Medicare Requirement.</i>	105	12,786	N/A
All Hospice Volunteers - Sum of above three categories.	410	29,983	10,412

2. BEREAVEMENT SERVICES Provide the following information for FY2009.

	Hospice Family Members	Community Members	Total
Total Number of Contacts by Visit Include any face-to-face one-to-one contact with individuals, regardless of setting. Do not include support group or camp services.	921	225	1,146
Total Number of Contacts by Phone Call	3,849	256	4,105
Total Number of Mailings to the Bereaved	8,053	1,167	9,220
Total Number of Individuals Who Received Bereavement Services Include all individuals enrolled for bereavement, including those served through support groups and camps.	216	121	337

For questions, contact *The Carolinas Center for Hospice and End of Life Care* at (919) 677-4113, or the *Association for Home & Hospice Care* at (919) 848-3450.

SECTION J. Nursing Facility Patients Served

NURSING FACILITY PATIENTS SERVED, IN LICENSED NURSING BEDS, BY PAY SOURCE: Please complete the following information for FY2009 for each county you served, based on who paid for the hospice care. Make additional copies, if necessary.

- These patients are a **subset** of patients reported in Section I.
- Data should reflect all patients served in nursing facility beds during the reporting period.
- Pay source is the source of payment for the hospice services. The source of payment for the nursing facility room and board is irrelevant for this analysis.
- Patients who change pay source during the reporting period should be reported for each pay source with the number of days of care recorded for each pay source.
- Self pay includes all patients with no payor source even if application of a sliding fee scale puts the charge for their care at zero.

County	Patients Served							Patient Care Days						
	Medicare	Medicaid	Private Insurance	Self Pay	VA/ Tri Care	Other	Totals	Medicare	Medicaid	Private Insurance	Self Pay	VA/ Tri Care	Other	Totals
Henderson	353	9	3	-	-	-	265	26457	1203	61	-	-	-	37721
Rowan	49	-	3	-	-	-	52	3005	-	150	-	-	-	3,155
Transylvania	7	-	-	-	-	-	7	351	-	-	-	-	-	351
Totals:	309	9	6	0	0	0	324	29813	1203	211	0	0	0	31,227

For questions, contact *The Carolinas Center for Hospice and End of Life Care* at (919) 677-4113, or the *Association for Home & Hospice Care* at (919) 848-3450.

Part 2

Inpatient & Residential Facilities: Please provide the following information for FY2009.

Inpatient Facility

Residential Facility *N/A*

1a. Inpatient or Combination Facility Name:

Elizabeth House

1b. Residential Facility Name:

2a. Location:

County: Henderson County

State: North Carolina

2b. Location:

County: _____

State: _____

3a. Where is the inpatient facility sited?

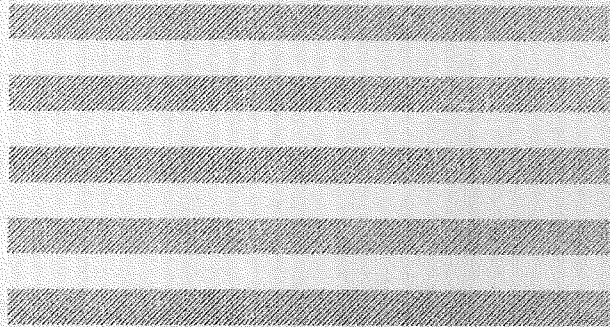
- On campus of Free Standing Hospice
- in Hospital
- in Nursing Home
- other (please specify): _____

3b. Where is the residential facility sited?

- On campus of Free Standing Hospice
- other (please specify): _____

4a. What level of care does the inpatient facility predominantly provide?

- Acute/General Inpatient – short-term, intensive hospice services provided to meet the hospice patient's need for skilled nursing, symptom management, or complex care.
- Residential Care – hospice home care provided in a facility rather than in the patient's personal residence.
- Mixed Use – both acute and residential levels.



5a. If the facility opened during FY2009, please note the date the facility was licensed:

N/A

5b. If the facility opened during FY2009, please note the date the facility was licensed:

6a. If the facility added beds during FY2009, please note the following:

Number of beds added: _____

Date the beds were licensed: _____

6b. If the facility added beds during FY2009, please note the following:

Number of beds added: _____

Date the beds were licensed: _____

For questions, contact *The Carolinas Center for Hospice and End of Life Care* at (919) 677-4113, or the *Association for Home & Hospice Care* at (919) 848-3450.

Part 2

INPATIENT & RESIDENTIAL FACILITIES – continued

6. Hospice Inpatient Facility Patients -and/or- Hospice Residence Patients

Only freestanding hospice inpatient facilities operated by a licensed hospice or hospice inpatient units with a Certificate of Need for hospice beds *and/or* freestanding hospice residences operated by a licensed hospice should complete this table.

Instructions:

- **List each county served and report all inpatient clients admitted or residential patients admitted, by county of residence. Count each inpatient client only once. Count each residential patient only once.**
- **The purpose of this table is to collect bed utilization data. Include all patients admitted in the facility even if the care was provided under contract to another hospice.**
- **TOTAL DAYS OF CARE DURING THE TIME PERIOD FY2009 ONLY. IF A PATIENT WAS ADMITTED BEFORE THE REPORTING PERIOD, INCLUDE ONLY THE DAYS OF CARE THAT OCCURRED DURING FY2009.**
- **TRANSFERS FROM HOSPICE HOME CARE INCLUDES TRANSFERS OF PATIENTS FROM ALL OTHER SETTINGS (HOME, HOSPITAL, NURSING FACILITY, ASSISTED LIVING FACILITY, INDEPENDENT LIVING FACILITY) TO THE DEDICATED HOSPICE INPATIENT OR RESIDENTIAL FACILITY.**
- **ALL THE DEATHS REPORTED IN THIS SECTION WOULD ALSO HAVE BEEN REPORTED ON THE AGENCY'S MAIN LICENSE IN SECTIONS C, D, E AND I. THIS IS A SUBSET OF TOTAL DEATHS AND REPRESENTS ONLY DEATHS THAT ACTUALLY OCCURRED AT THE FACILITY.**

<u>Hospice Inpatient Facility Patients</u>					<u>Hospice Residence Patients</u> N/A		
<u>County of Residence</u>	<u>Direct Admits</u>	<u>Transfer from Hospice Home Care</u>	<u>Total Days Of Care</u>	<u>Total # of Deaths</u>	<u>Total Number Of Patients Admitted</u>	<u>Total Days Of Care</u>	<u>Total # of Deaths</u>
Henderson	237	260	4430	418			
Buncombe	-	8	81	6			
Transylvania	-	4	35	4			
<u>Out of State</u>							
<u>Total</u>	237	272	4546	428			

For questions, contact *The Carolinas Center for Hospice and End of Life Care* at (919) 677-4113, or the *Association for Home & Hospice Care* at (919) 848-3450.

Part 2

INPATIENT & RESIDENTIAL FACILITIES -- continued

7. Facility Staffing by Discipline

Complete Section K7 using the following definitions and calculation instructions:

Direct Care: Includes all activities involved in care delivery, including visits, telephone calls, charting, team meetings, travel for patient care, and arrangement or coordination of care. When a supervisor provides direct care, estimate the time involved in direct care as distinct from supervision of other staff or program activities.

FTE: One full time equivalent (FTE) is 2080 hours per year (40 hours per week times 52 weeks). Provide actual FTEs utilized, not the budgeted number of FTEs.

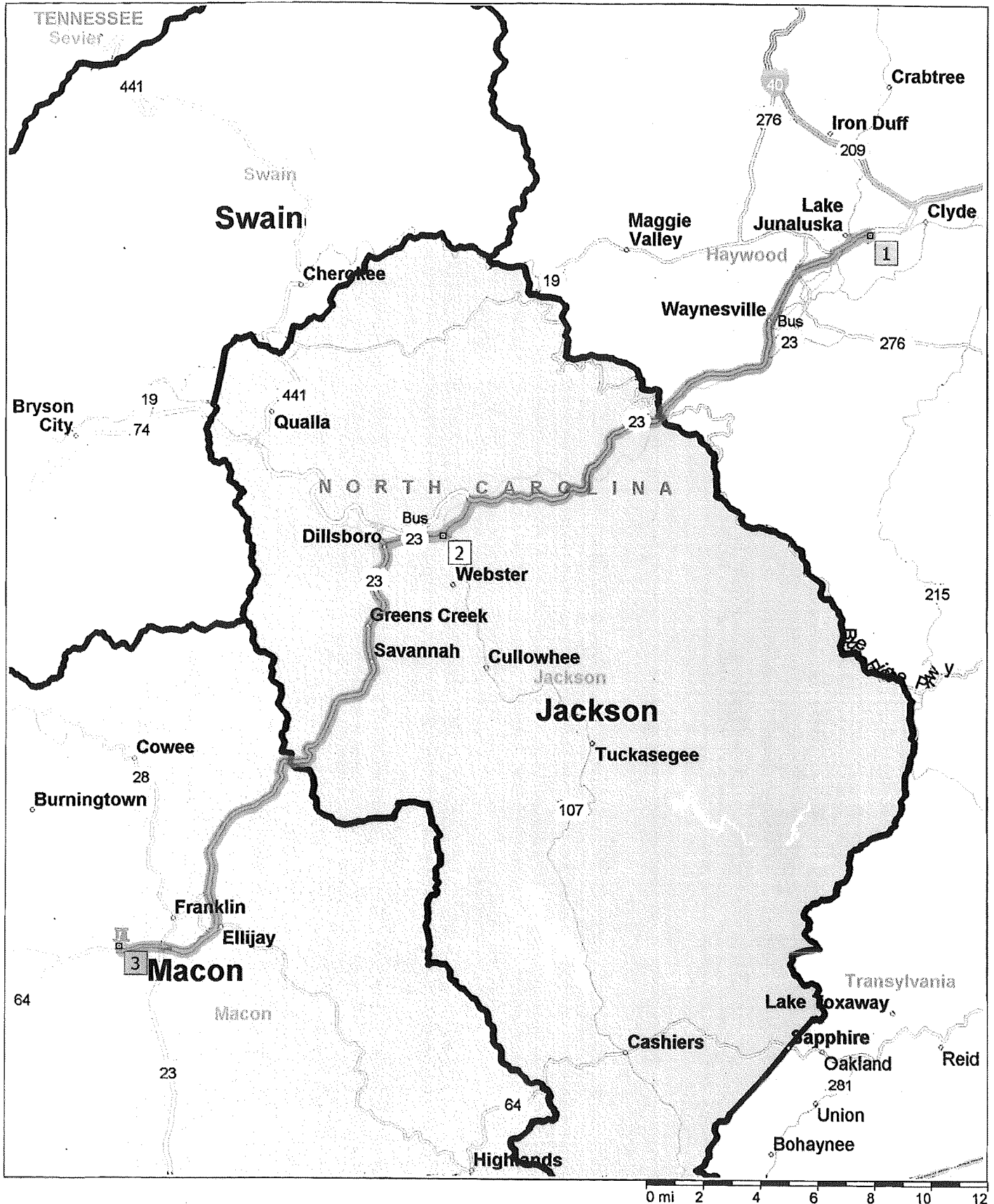
Calculations: Total FTEs: Divide paid hours by 2080 (can include up to 2 decimal points). Include vacation, sick leave, education leave, and all other time normally compensated by the agency. Categorize your FTEs as you do for the Medicare Hospice Cost Report. Include hourly, salaried and contract staff.

STAFFING BY DISCIPLINE - staffing information for FY2009

	Staffing by Discipline	Facility FTE's
1	Nursing – Direct Clinical Include RNs, and LPNs. Include on-call and after hours care. Do not include supervisors or other clinical administrators unless a portion of their time is spent in direct care*.	12.88
2	Social Services Include medical social services staff as defined by CMS for the cost report. Do not include bereavement counselors.	2.65
3	Hospice Aides	10.44
4	Physicians – Paid Include medical directors and other physicians providing direct care to patients and participating in clinical support. Exclude volunteer physicians.	1.58
5	Physicians – Volunteer	—
6	Chaplains	1.00
7	Other Clinical Include any paid staff in addition to those captured above who provide direct care to patients or families. Include nurse practitioners, therapists, and dentists. Do not include volunteers or bereavement staff.	2.80
11	Non-Clinical Include all administrative and general staff.	4.51

Distance Sylva to Haywood.Macon

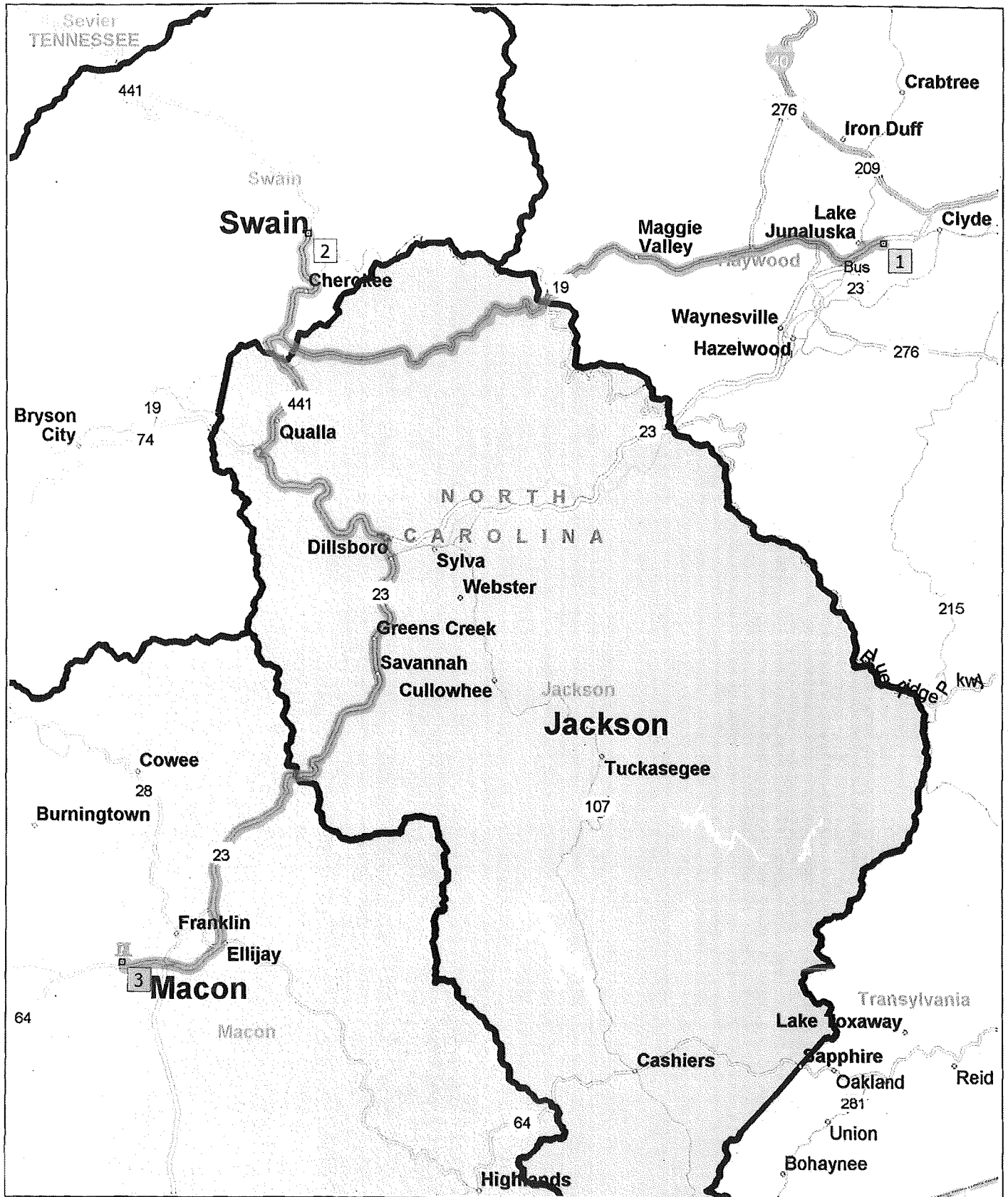
45.0 miles; 59 minutes



9:00 AM	0.0 mi	1 Depart near Tuscola Park on Sunset Ridge Rd (West) for 0.1 mi
9:00 AM	0.1 mi	Turn RIGHT (North) onto Spicewood Dr for 0.1 mi
9:01 AM	0.2 mi	Turn LEFT (West) onto Hospital Dr for 0.5 mi
9:02 AM	0.8 mi	Turn RIGHT (North) onto US-23 Bus [SR-209] for 0.1 mi
9:03 AM	0.9 mi	Turn LEFT (South-West) onto Access Rd [Lake Junaluska Depot Rd] for 174 yds
9:03 AM	1.0 mi	Take Ramp onto US-19 [US-23] for 0.6 mi
9:04 AM	1.6 mi	At exit 103, road name changes to US-23 [US-74] for 17.9 mi towards US-23 / US-74 / Waynesville / Sylva
9:22 AM	19.5 mi	At exit 85, keep RIGHT onto Ramp for 0.4 mi towards US-23-Br / NC-107 / Cullowhee / W Carolina Univ
9:23 AM	19.9 mi	Keep STRAIGHT onto US-23 Bus for 1.4 mi
9:25 AM	21.3 mi	Turn RIGHT (West) onto US-23 Bus [SR-107] for 87 yds
9:25 AM	21.4 mi	Turn LEFT (South) onto Race Ln for 76 yds
9:26 AM	21.4 mi	2 At near Sylva, return North-East on Race Ln for 76 yds
9:26 AM	21.5 mi	Turn LEFT (West) onto US-23 Bus [SR-107] for 2.0 mi
9:32 AM	23.5 mi	Keep STRAIGHT onto US-23 Bus for 0.2 mi
9:32 AM	23.7 mi	Turn LEFT (South) onto US-23 [US-441] for 19.6 mi
9:55 AM	43.3 mi	Road name changes to US-64 for 1.4 mi
9:57 AM	44.7 mi	Turn RIGHT (North) onto Louisa Chapel Rd for 0.2 mi
9:58 AM	44.9 mi	Turn LEFT (West) onto NC-1442 [Old Murphy Rd] for 0.1 mi
9:59 AM	45.0 mi	3 Arrive 2255 Old Murphy Rd, Franklin, NC 28734 [2255 Old Murphy Rd, Franklin, NC 28734]

NW Swain to Haywood.Macon

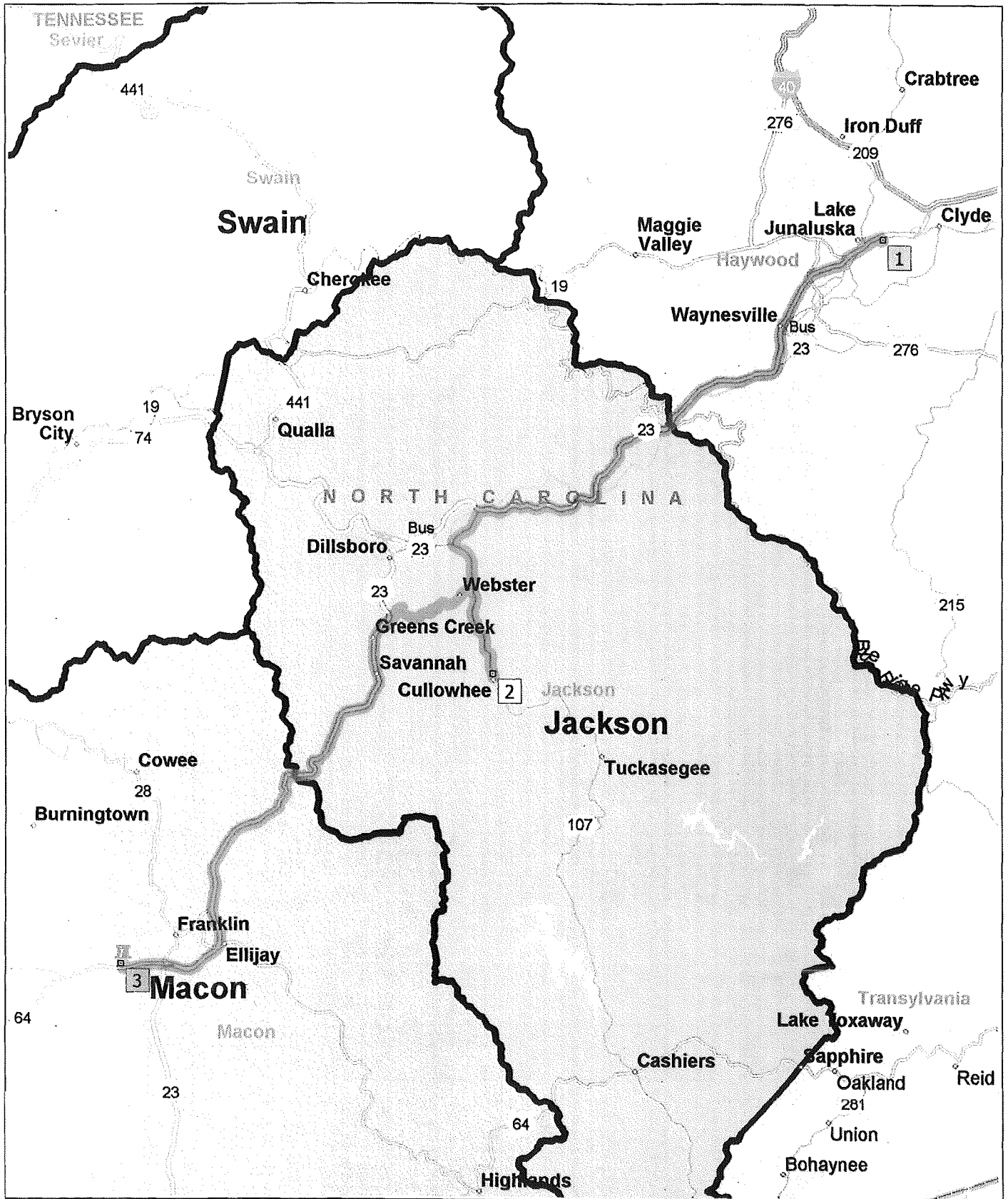
70.2 miles; 1 hour, 31 minutes



9:00 AM	0.0 mi	1 Depart near Tuscola Park on Sunset Ridge Rd (West) for 0.1 mi
9:00 AM	0.1 mi	Turn RIGHT (North) onto Spicewood Dr for 0.1 mi
9:01 AM	0.2 mi	Turn LEFT (West) onto Hospital Dr for 0.5 mi
9:02 AM	0.8 mi	Turn RIGHT (North) onto US-23 Bus [SR-209] for 0.1 mi
9:03 AM	0.9 mi	Turn LEFT (South-West) onto Access Rd [Lake Junaluska Depot Rd] for 174 yds
9:03 AM	1.0 mi	Take Ramp onto US-19 [US-23] for 0.6 mi
9:04 AM	1.6 mi	At exit 103, keep RIGHT onto Ramp for 0.2 mi towards US-19 / Maggie Valley / Cherokee
9:04 AM	1.8 mi	Bear RIGHT (West) onto US-19 [Dellwood Rd] for 24.0 mi
9:35 AM	25.8 mi	Turn RIGHT (North) onto US-441 for 4.7 mi
9:42 AM	30.5 mi	2 At near Ravensford, return South on US-441 for 4.7 mi
9:48 AM	35.2 mi	Turn RIGHT (West) onto US-19 [US-441] for 0.5 mi
9:49 AM	35.6 mi	Bear LEFT (South) onto US-441 for 5.2 mi
9:55 AM	40.9 mi	Take Ramp (RIGHT) onto US-441 [US-74] for 7.3 mi towards US-441 / US-74
10:04 AM	48.1 mi	At exit 81, take Ramp (RIGHT) onto US-23 [US-441] for 20.4 mi towards US-23 / US-441 / Dillsboro / Franklin / Atlanta
10:28 AM	68.5 mi	Road name changes to US-64 for 1.4 mi
10:30 AM	70.0 mi	Turn RIGHT (North) onto Louisa Chapel Rd for 0.2 mi
10:30 AM	70.1 mi	Turn LEFT (West) onto NC-1442 [Old Murphy Rd] for 0.1 mi
10:31 AM	70.2 mi	3 Arrive 2255 Old Murphy Rd, Franklin, NC 28734 [2255 Old Murphy Rd, Franklin, NC 28734]

Cullowhee to Haywood.Macon

52.7 miles; 1 hour, 8 minutes



9:00 AM	0.0 mi	1 Depart near Tuscola Park on Sunset Ridge Rd (West) for 0.1 mi
9:00 AM	0.1 mi	Turn RIGHT (North) onto Spicewood Dr for 0.1 mi
9:01 AM	0.2 mi	Turn LEFT (West) onto Hospital Dr for 0.5 mi
9:02 AM	0.8 mi	Turn RIGHT (North) onto US-23 Bus [SR-209] for 0.1 mi
9:03 AM	0.9 mi	Turn LEFT (South-West) onto Access Rd [Lake Junaluska Depot Rd] for 174 yds
9:03 AM	1.0 mi	Take Ramp onto US-19 [US-23] for 0.6 mi
9:04 AM	1.6 mi	At exit 103, road name changes to US-23 [US-74] for 17.9 mi towards US-23 / US-74 / Waynesville / Sylva
9:22 AM	19.5 mi	At exit 85, keep RIGHT onto Ramp for 0.4 mi towards US-23-Br / NC-107 / Cullowhee / W Carolina Univ
9:23 AM	19.9 mi	Keep STRAIGHT onto US-23 Bus for 1.4 mi
9:25 AM	21.3 mi	Bear LEFT (East) onto SR-107 for 5.1 mi
9:32 AM	26.5 mi	Turn LEFT (East) onto Blackhawk Rd, then immediately turn LEFT (North) onto SR-107 for 0.1 mi
9:33 AM	26.6 mi	2 At near Cullowhee, stay on SR-107 (North) for 3.2 mi
9:37 AM	29.8 mi	Turn LEFT (West) onto SR-116 for 2.0 mi
9:41 AM	31.7 mi	Turn RIGHT to stay on SR-116 for 1.3 mi
9:43 AM	33.0 mi	Turn LEFT to stay on SR-116 for 0.9 mi
9:44 AM	34.0 mi	Road name changes to Local road(s) for 21 yds
9:45 AM	34.0 mi	Turn LEFT (South-West) onto US-23 [US-441] for 17.0 mi
10:05 AM	51.0 mi	Road name changes to US-64 for 1.4 mi
10:07 AM	52.4 mi	Turn RIGHT (North) onto Louisa Chapel Rd for 0.2 mi
10:08 AM	52.6 mi	Turn LEFT (West) onto NC-1442 [Old Murphy Rd] for 0.1 mi
10:08 AM	52.7 mi	3 Arrive 2255 Old Murphy Rd, Franklin, NC 28734 [2255 Old Murphy Rd, Franklin, NC 28734]

Bryson City to Haywood.Macon

67.4 miles; 1 hour, 21 minutes

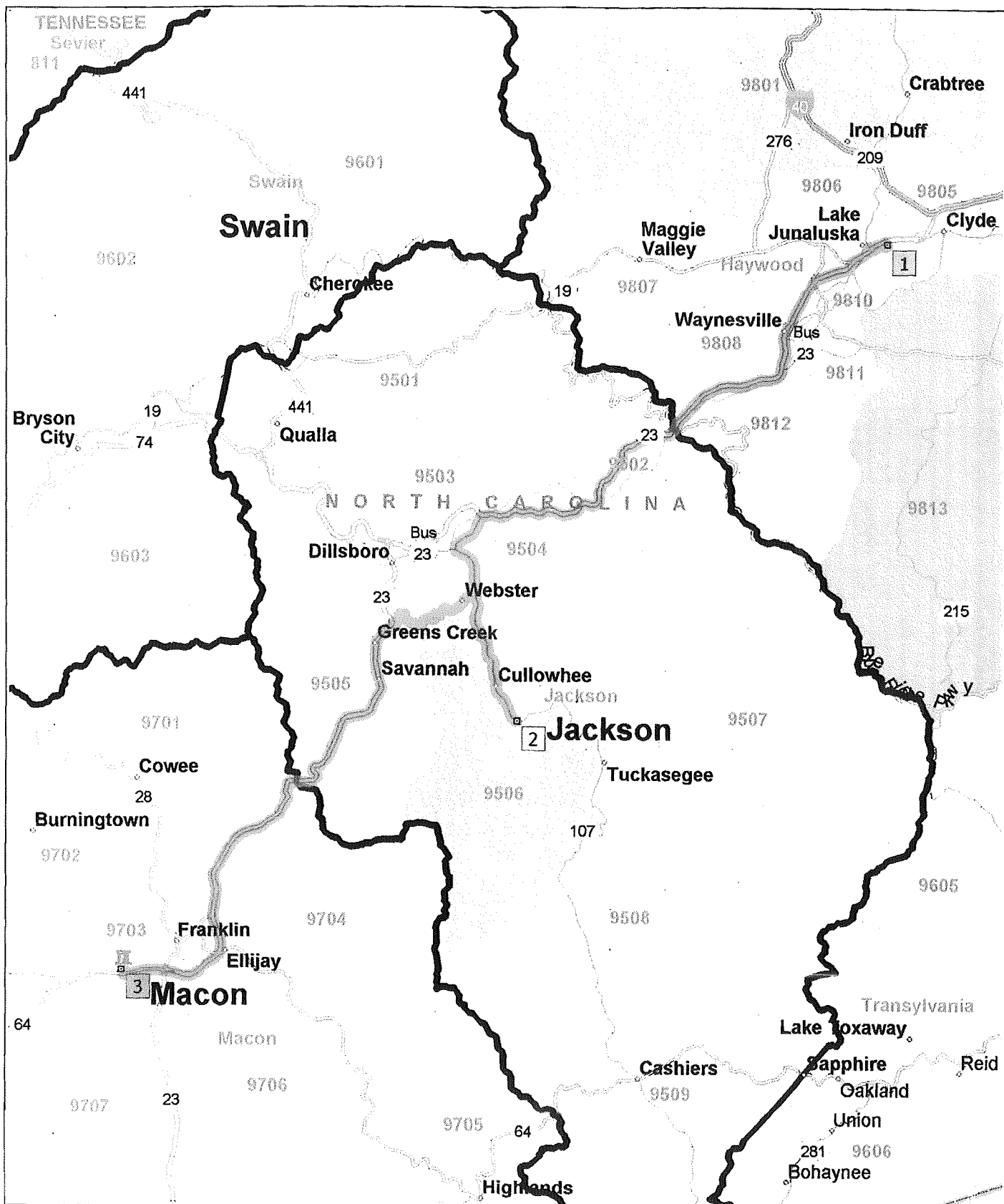


Copyright © and (P) 1988–2008 Microsoft Corporation and/or its suppliers. All rights reserved. <http://www.microsoft.com/mappoint/>
Certain mapping and direction data © 2008 NAVTEQ. All rights reserved. The Data for areas of Canada includes information taken with permission from Canadian authorities, including: © Her Majesty the Queen in Right of Canada, © Queen's Printer for Ontario. NAVTEQ and NAVTEQ ON BOARD are trademarks of NAVTEQ. © 2008 Tele Atlas North America, Inc. All rights reserved. Tele Atlas and Tele Atlas North America are trademarks of Tele Atlas, Inc. © 2008 by Applied Geographic Systems. All rights reserved.

9:00 AM	0.0 mi	1 Depart near Tuscola Park on Sunset Ridge Rd (West) for 0.1 mi
9:00 AM	0.1 mi	Turn RIGHT (North) onto Spicewood Dr for 0.1 mi
9:01 AM	0.2 mi	Turn LEFT (West) onto Hospital Dr for 0.5 mi
9:02 AM	0.8 mi	Turn RIGHT (North) onto US-23 Bus [SR-209] for 0.1 mi
9:03 AM	0.9 mi	Turn LEFT (South-West) onto Access Rd [Lake Junaluska Depot Rd] for 174 yds
9:03 AM	1.0 mi	Take Ramp onto US-19 [US-23] for 0.6 mi
9:04 AM	1.6 mi	At exit 103, road name changes to US-23 [US-74] for 22.3 mi towards US-23 / US-74 / Waynesville / Sylva
9:27 AM	23.9 mi	At exit 81, road name changes to US-74 for 0.2 mi
9:27 AM	24.1 mi	Road name changes to US-441 [US-74] for 7.2 mi
9:36 AM	31.3 mi	At exit 74, road name changes to US-74 for 6.6 mi
9:43 AM	37.9 mi	At exit 67, keep RIGHT onto Ramp for 0.3 mi towards Bryson City
9:43 AM	38.2 mi	Keep RIGHT to stay on Ramp for 98 yds
9:43 AM	38.2 mi	Keep STRAIGHT onto Bennett Rd [Franklin St] for 0.5 mi
9:44 AM	38.7 mi	2 At Bryson City, return South on Bennett Rd [Franklin St] for 0.5 mi
9:45 AM	39.1 mi	Take Ramp (RIGHT) onto US-74 [Great Smokey Mountians Expy] for 3.1 mi towards US-74
9:48 AM	42.2 mi	Road name changes to US-19 [US-74] for 2.1 mi
9:50 AM	44.3 mi	Bear LEFT (South) onto SR-28 for 20.8 mi
10:16 AM	65.1 mi	Turn RIGHT (West) onto US-441 Bus [SR-28] for 142 yds
10:16 AM	65.2 mi	Turn LEFT to stay on US-441 Bus [SR-28] for 109 yds
10:16 AM	65.2 mi	Turn RIGHT (West) onto NC-1442 [W Palmer St] for 0.9 mi
10:18 AM	66.1 mi	Keep STRAIGHT onto NC-1442 [Old Murphy Rd] for 1.4 mi
10:21 AM	67.4 mi	3 Arrive 2255 Old Murphy Rd, Franklin, NC 28734 [2255 Old Murphy Rd, Franklin, NC 28734]

Census Tracts Jackson County

55.8 miles; 1 hour, 11 minutes



9:00 AM	0.0 mi	1 Depart near Tuscola Park on Sunset Ridge Rd (West) for 0.1 mi
9:00 AM	0.1 mi	Turn RIGHT (North) onto Spicewood Dr for 0.1 mi
9:01 AM	0.2 mi	Turn LEFT (West) onto Hospital Dr for 0.5 mi
9:02 AM	0.8 mi	Turn RIGHT (North) onto US-23 Bus [SR-209] for 0.1 mi
9:03 AM	0.9 mi	Turn LEFT (South-West) onto Access Rd [Lake Junaluska Depot Rd] for 174 yds
9:03 AM	1.0 mi	Take Ramp onto US-19 [US-23] for 0.6 mi
9:04 AM	1.6 mi	At exit 103, road name changes to US-23 [US-74] for 17.9 mi towards US-23 / US-74 / Waynesville / Sylva
9:22 AM	19.5 mi	At exit 85, keep RIGHT onto Ramp for 0.4 mi towards US-23-Br / NC-107 / Cullowhee / W Carolina Univ
9:23 AM	19.9 mi	Keep STRAIGHT onto US-23 Bus for 1.4 mi
9:25 AM	21.3 mi	Bear LEFT (East) onto SR-107 for 6.7 mi
9:34 AM	28.0 mi	2 At near Fallcliff, return West on SR-107 for 4.9 mi
9:40 AM	32.9 mi	Turn LEFT (West) onto SR-116 for 2.0 mi
9:44 AM	34.9 mi	Turn RIGHT to stay on SR-116 for 1.3 mi
9:46 AM	36.2 mi	Turn LEFT to stay on SR-116 for 0.9 mi
9:47 AM	37.1 mi	Road name changes to Local road(s) for 21 yds
9:48 AM	37.1 mi	Turn LEFT (South-West) onto US-23 [US-441] for 17.0 mi
10:08 AM	54.1 mi	Road name changes to US-64 for 1.4 mi
10:09 AM	55.5 mi	Turn RIGHT (North) onto Louisa Chapel Rd for 0.2 mi
10:10 AM	55.7 mi	Turn LEFT (West) onto NC-1442 [Old Murphy Rd] for 0.1 mi
10:11 AM	55.8 mi	3 Arrive 2255 Old Murphy Rd, Franklin, NC 28734 [2255 Old Murphy Rd, Franklin, NC 28734]

Table 13A: Hospice Data by County of Patient Origin - 2009 Data

Lic. #	Facility Cnty	Facility Name	Admissions	Days of Care	Deaths
Agencies or Offices serving residents of Alamance					
HOS3823	Alamance	Amedisys Hospice	25	1,612	9
HOS2958	Durham	Community Home Care and Hospice	2	22	0
HOS0021	Durham	Duke Hospice	9	436	10
HOS2281	Wake	Heartland Home Health Care and Hospice	4	818	1
HC0361	Alamance	Hospice and Palliative Care Center of Alamance- Ca	698	55,003	586
HOS3049	Alamance	Liberty Home Care and Hospice	21	2,551	11
HOS0370	Chatham	UNC Hospice	5	284	4
HOS3269	Nash	United Hospice of Eastern Carolina	1	23	1
Totals for Alamance			765	60,749	622
Agencies or Offices serving residents of Alexander					
HOS0185	Caldwell	Caldwell Hospice and Palliative Care, Inc	0	91	0
HC0362	Alexander	Hospice and Home Care of Alexander County, Inc	47	3,535	33
HOS0387	Iredell	Hospice of Iredell County, Inc	54	2,203	48
HOS0407	Wilkes	Hospice of Wilkes Regional Medical Center	1	31	1
HOS0367	Catawba	Palliative Care Center & Hospice of Catawba Valley,	67	4,420	51
Totals for Alexander			169	10,280	133
Agencies or Offices serving residents of Alleghany					
HOS1123	Alleghany	High Country Health Care System	41	3,581	31
HC0409	Forsyth	Hospice & Palliative Care Center	2	18	2
HOS0404	Surry	Mountain Valley Hospice and Palliative Care	1	78	1
HOS1001	Surry	Mountain Valley Hospice and Palliative Care	6	92	5
Totals for Alleghany			50	3,769	39
Agencies or Offices serving residents of Anson					
HC1869	Anson	Anson Community Hospice, Inc	20	1,292	17
HOS3116	Union	Community Home Care and Hospice	3	280	2
HOS0402	Stanly	Hopice of Stanly County, Inc	1	40	2
HC0369	Mecklenburg	Hospice and Palliative Care Charlotte Region	2	10	2
HOS1898	Anson	Hospice Services of Anson County	10	1,031	11
HOS3064	Anson	Liberty Home Care and Hospice	9	880	4
Totals for Anson			45	3,533	38
Agencies or Offices serving residents of Ashe					
HOS1124	Ashe	High Country Health Care System	80	8,346	61
Totals for Ashe			80	8,346	61
Agencies or Offices serving residents of Avery					
HOS0113	Buncombe	Care Partners Hospice & Palliative Care Services	1	23	1

Figures were taken from the 2010 Hospice Data Supplements. Data were self-reported and have not been verified by the Medical Facilities Planning Section.

Lic. #	Facility Cnty	Facility Name	Admissions	Days of Care	Deaths
HOS0363	Avery	Medi Home Hospice	51	4,969	34
HOS0832	Mitchell	The Hospice & Palliative Care Center of Mitchell Co	1	1	1
Totals for Avery			53	4,993	36
Agencies or Offices serving residents of Beaufort					
HOS0331	Pitt	AseraCare Hospice	64	7,898	41
HOS2516	Beaufort	Community Home Care and Hospice	141	17,168	101
HC0393	Nash	Hospice and Palliative Care of Nash General Hospita	1	71	1
HOS3347	Craven	United Hospice of Coastal Carolina	7	226	5
HOS1711	Pitt	University Health Systems Home Health and Hospic	23	763	21
Totals for Beaufort			236	26,126	169
Agencies or Offices serving residents of Bertie					
HOS3008	Martin	Community Home Care and Hospice	8	391	7
HOS3269	Nash	United Hospice of Eastern Carolina	1	52	0
HOS0425	Hertford	University Health Systems Home Health and Hospic	52	2,461	45
Totals for Bertie			61	2,904	52
Agencies or Offices serving residents of Bladen					
HC0283	Cumberland	Cape Fear Valley Home Care and Hospice	3	54	1
HC1844	Sampson	Community Home Care and Hospice	1	4	0
HOS3011	Columbus	Community Home Care and Hospice	3	64	1
HOS1945	Bladen	Community Home Care and Hospice	39	6,008	15
HC0359	Cumberland	HealthKeeperz	3	19	3
HOS2007	Columbus	Liberty Home Care and Hospice	7	388	4
HOS3054	Sampson	Liberty Home Care and Hospice	1	41	0
HOS2003	Bladen	Liberty Home Care and Hospice	1	12	1
HOS0415	Bladen	Lower Cape Fear Hospice, Inc	67	6,377	62
HOS2861	Robeson	Native Angels Hospice	10	1,565	2
HOS1599	Robeson	Southeastern Hospice	19	443	18
Totals for Bladen			154	14,975	107
Agencies or Offices serving residents of Brunswick					
HOS3010	Brunswick	Community Home Care and Hospice	24	1,045	15
HOS3011	Columbus	Community Home Care and Hospice	1	45	0
HOS2007	Columbus	Liberty Home Care and Hospice	2	170	1
HOS2008	New Hanover	Liberty Home Care and Hospice	0	55	0
HOS2006	Brunswick	Liberty Home Care and Hospice	73	8,153	52
HOS0414	Brunswick	Lower Cape Fear Hospice, Inc	375	28,814	324
Totals for Brunswick			475	38,282	392
Agencies or Offices serving residents of Buncombe					
HOS0113	Buncombe	Care Partners Hospice & Palliative Care Services	1,014	67,595	915

Figures were taken from the 2010 Hospice Data Supplements. Data were self-reported and have not been verified by the Medical Facilities Planning Section.

Lic. #	Facility Cnty	Facility Name	Admissions	Days of Care	Deaths
HOS0386	Henderson	Four Seasons Compassion for Life	67	5,080	44
HC0419	Madison	Madison Home Care and Hospice	4	696	5
		Totals for Buncombe	1,085	73,371	964
Agencies or Offices serving residents of Burke					
HOS0364	Burke	Burke Hospice and Palliative Care, Inc	380	26,596	313
HOS0185	Caldwell	Caldwell Hospice and Palliative Care, Inc	3	422	5
HOS0363	Avery	Medi Home Hospice	5	102	5
HOS0367	Catawba	Palliative Care Center & Hospice of Catawba Valley,	43	3,216	27
		Totals for Burke	431	30,336	350
Agencies or Offices serving residents of Cabarrus					
HOS2048	Harnett	Community Home Care and Hospice	1	62	0
HOS3116	Union	Community Home Care and Hospice	5	46	3
HOS0402	Stanly	Hopice of Stanly County, Inc	4	129	4
HC0409	Forsyth	Hospice & Palliative Care Center	1	15	1
HOS3132	Mecklenburg	Hospice & Palliative Care Charlotte Region	10	1,516	10
HOS1702	Mecklenburg	Hospice & Palliative Care Lake Norman	25	1,619	21
HC0369	Mecklenburg	Hospice and Palliative Care Charlotte Region	13	664	8
HOS0365	Cabarrus	Hospice of Carbarrus County, Inc	556	38,767	475
HOS1445	Mecklenburg	Prebyterian Hospice	2	43	1
HOS3918	Rowan	Rowan Regional Hospice	7	660	6
		Totals for Cabarrus	624	43,521	529
Agencies or Offices serving residents of Caldwell					
HOS0364	Burke	Burke Hospice and Palliative Care, Inc	11	1,232	7
HOS0185	Caldwell	Caldwell Hospice and Palliative Care, Inc	439	41,184	392
HOS0113	Buncombe	Care Partners Hospice & Palliative Care Services	1	9	1
HOS0367	Catawba	Palliative Care Center & Hospice of Catawba Valley,	13	1,733	7
		Totals for Caldwell	464	44,158	407
Agencies or Offices serving residents of Camden					
HOS1677	Pasquotank	Albermarle Hospice	12	513	11
HOS3301	Pasquotank	Community Home Care and Hospice	1	120	1
		Totals for Camden	13	633	12
Agencies or Offices serving residents of Carteret					
HC0228	Wayne	3HC	1	30	1
HOS2998	Carteret	Community Home Care and Hospice	38	5,643	34
HOS3238	Craven	Continuum Home Care & Hospice of Craven County	19	3,674	12
HC1209	Onslow	Continuum II Home Care and Hospice	1	8	0
HOS0613	Carteret	Hospice of Carteret County	177	10,895	151
HOS3048	Carteret	Liberty Home Care and Hospice	19	1,052	12

Figures were taken from the 2010 Hospice Data Supplements. Data were self-reported and have not been verified by the Medical Facilities Planning Section.

Lic. #	Facility Cnty	Facility Name	Admissions	Days of Care	Deaths
HOS3347	Craven	United Hospice of Coastal Carolina	6	280	4
		Totals for Carteret	261	21,582	214
Agencies or Offices serving residents of Caswell					
HOS3823	Alamance	Amedisys Hospice	1	155	0
HOS2958	Durham	Community Home Care and Hospice	5	340	2
HC0533	Person	Home Health and Hospice of Person County	0	12	1
HC0361	Alamance	Hospice and Palliative Care Center of Alamance- Ca	60	7,146	50
HOS3269	Nash	United Hospice of Eastern Carolina	1	31	1
		Totals for Caswell	67	7,684	54
Agencies or Offices serving residents of Catawba					
HOS0364	Burke	Burke Hospice and Palliative Care, Inc	8	751	8
HOS0185	Caldwell	Caldwell Hospice and Palliative Care, Inc	14	496	8
HOS0389	Lincoln	Hospice & Palliative Care Lincoln County	9	1,053	7
HC0369	Mecklenburg	Hospice and Palliative Care Charlotte Region	2	120	1
HOS0387	Iredell	Hospice of Iredell County, Inc	2	183	2
HOS1338	Iredell	Hospice of Iredell County, Inc	9	435	6
HOS0367	Catawba	Palliative Care Center & Hospice of Catawba Valley,	812	63,011	715
		Totals for Catawba	856	66,049	747
Agencies or Offices serving residents of Chatham					
HOS3147	Wake	Amedisys Hospice	2	188	0
HOS2034	Lee	Community Home Care and Hospice	1	180	0
HOS2983	Chatham	Community Home Care and Hospice	59	11,641	43
HOS2223	Wake	Community Home Care and Hospice	1	60	1
HOS0021	Durham	Duke Hospice	6	245	6
HC0427	Moore	First Health Hospice & Palliative Care	1	10	1
HOS2281	Wake	Heartland Home Health Care and Hospice	4	666	2
HC0361	Alamance	Hospice and Palliative Care Center of Alamance- Ca	1	6	1
HOS1581	Guilford	Hospice of the Piedmont, Inc	1	18	1
HOS3135	Chatham	Hospice of Wake County, Inc	1	5	1
HOS3149	Chatham	Liberty Home Care and Hospice	28	2,112	20
HOS0370	Chatham	UNC Hospice	112	8,450	92
		Totals for Chatham	217	23,581	168
Agencies or Offices serving residents of Cherokee					
HOS0113	Buncombe	Care Partners Hospice & Palliative Care Services	2	4	2
HC0275	Cherokee	Good Shepard Home Health and Hospice Agency	74	2,666	69
		Totals for Cherokee	76	2,670	71
Agencies or Offices serving residents of Chowan					
HOS1677	Pasquotank	Albermarle Hospice	19	722	17

Figures were taken from the 2010 Hospice Data Supplements. Data were self-reported and have not been verified by the Medical Facilities Planning Section.

Lic. #	Facility Cnty	Facility Name	Admissions	Days of Care	Deaths
HOS3301	Pasquotank	Community Home Care and Hospice	2	73	2
HOS0425	Hertford	University Health Systems Home Health and Hospic	8	365	10
Totals for Chowan			29	1,160	29
Agencies or Offices serving residents of Clay					
HC0318	Clay	Good Sheperd Home Health and Hospice Agency	25	1,162	23
Totals for Clay			25	1,162	23
Agencies or Offices serving residents of Cleveland					
HOS0389	Lincoln	Hospice & Palliative Care Lincoln County	0	295	1
HC0369	Mecklenburg	Hospice and Palliative Care Charlotte Region	1	2	1
HOS0371	Cleveland	Hospice of Cleveland, Inc	553	45,171	498
HC0812	Gaston	Hospice of Gaston County, Inc	13	1,736	8
HOS0400	Rutherford	Hospice of Rutherford County, Inc.	4	398	2
HOS0367	Catawba	Palliative Care Center & Hospice of Catawba Valley,	1	20	1
Totals for Cleveland			572	47,622	511
Agencies or Offices serving residents of Columbus					
HOS3011	Columbus	Community Home Care and Hospice	47	5,550	13
HC0359	Cumberland	HealthKeeperz	1	126	0
HOS2007	Columbus	Liberty Home Care and Hospice	55	7,300	43
HOS0417	Columbus	Lower Cape Fear Hospice, Inc	166	12,924	150
HOS2861	Robeson	Native Angels Hospice	4	418	4
HOS1599	Robeson	Southeastern Hospice	1	1	1
Totals for Columbus			274	26,319	211
Agencies or Offices serving residents of Craven					
HC0195	Lenoir	3HC	1	4	0
HC0228	Wayne	3HC	2	65	2
HC0506	Jones	3HC	12	616	11
HOS0331	Pitt	AseraCare Hospice	4	445	4
HOS2302	Craven	Community Home Care and Hospice	98	17,804	65
HOS2984	Lenoir	Community Home Care and Hospice	7	790	3
HOS3238	Craven	Continuum Home Care & Hospice of Craven County	23	3,809	19
HC0493	Craven	Craven Count Health Dept. Home Health-Hospice A	90	5,064	76
HOS2005	Onslow	Liberty Home Care and Hospice	2	32	1
HOS3048	Carteret	Liberty Home Care and Hospice	4	156	3
HOS3347	Craven	United Hospice of Coastal Carolina	72	9,665	58
HOS1711	Pitt	University Health Systems Home Health and Hospic	6	43	5
Totals for Craven			321	38,493	247
Agencies or Offices serving residents of Cumberland					
HC0255	Sampson	3HC	21	1,771	13

Figures were taken from the 2010 Hospice Data Supplements. Data were self-reported and have not been verified by the Medical Facilities Planning Section.

Lic. #	Facility Cnty	Facility Name	Admissions	Days of Care	Deaths
HC0283	Cumberland	Cape Fear Valley Home Care and Hospice	361	13,758	211
HOS3412	Cumberland	Carrol S. Roberson Center	287	2,025	125
HC1844	Sampson	Community Home Care and Hospice	1	12	0
HOS2034	Lee	Community Home Care and Hospice	1	180	0
HOS2048	Harnett	Community Home Care and Hospice	3	98	0
HC1331	Cumberland	Community Home Care and Hospice	233	29,390	132
HOS3011	Columbus	Community Home Care and Hospice	0	55	0
HOS2958	Durham	Community Home Care and Hospice	1	7	1
HC0359	Cumberland	HealthKeeperz	64	4,116	31
HC0393	Nash	Hospice and Palliative Care of Nash General Hospita	1	28	1
HOS0375	Harnett	Hospice of Harnett County, Inc	5	156	3
HOS2290	Hoke	Liberty Home Care and Hospice	1	4	1
HOS2004	Cumberland	Liberty Home Care and Hospice	80	6,610	50
HOS3054	Sampson	Liberty Home Care and Hospice	1	55	1
HOS3067	Harnett	Liberty Home Care and Hospice	1	57	0
HOS2861	Robeson	Native Angels Hospice	40	3,165	12
HOS1599	Robeson	Southeastern Hospice	1	13	1
HOS3347	Craven	United Hospice of Coastal Carolina	1	16	1
HOS3346	Johnston	United Hospice of Eastern Carolina, Smithfield	43	6,980	28
Totals for Cumberland			1,146	68,496	611
Agencies or Offices serving residents of Currituck					
HOS1677	Pasquotank	Albermarle Hospice	51	2,273	42
HOS3301	Pasquotank	Community Home Care and Hospice	20	3,407	18
HC0494	Dare	Dare Home Health and Hospice	2	13	2
Totals for Currituck			73	5,693	62
Agencies or Offices serving residents of Dare					
HOS1677	Pasquotank	Albermarle Hospice	0	26	2
HOS3301	Pasquotank	Community Home Care and Hospice	2	164	2
HOS3302	Hyde	Community Home Care and Hospice	13	468	8
HC0494	Dare	Dare Home Health and Hospice	82	3,154	65
Totals for Dare			97	3,812	77
Agencies or Offices serving residents of Davidson					
HOS0372	Davidson	Hopice of Davidson County, Inc	346	25,634	302
HOS0402	Stanly	Hopice of Stanly County, Inc	1	147	0
HOS2425	Rowan	Hospice & Palliative Care Center	14	1,569	11
HC0409	Forsyth	Hospice & Palliative Care Center	68	5,484	48
HOS0365	Cabarrus	Hospice of Cabarrus County, Inc	1	5	1

Figures were taken from the 2010 Hospice Data Supplements. Data were self-reported and have not been verified by the Medical Facilities Planning Section.

Lic. #	Facility Cnty	Facility Name	Admissions	Days of Care	Deaths
HC0397	Randolph	Hospice of Randolph County, Inc	7	720	5
HOS1581	Guilford	Hospice of the Piedmont, Inc	115	5,821	106
HOS3051	Davidson	Liberty Home Care and Hospice	11	2,582	5
HOS3918	Rowan	Rowan Regional Hospice	4	290	2
		Totals for Davidson	567	42,252	480
Agencies or Offices serving residents of Davie					
HOS3273	Iredell	Community Home Care and Hospice	1	12	0
HOS2425	Rowan	Hospice & Palliative Care Center	1	148	1
HC0409	Forsyth	Hospice & Palliative Care Center	18	1,280	15
HOS3084	Davie	Hospice & Palliative Care Center	117	14,221	111
HOS0387	Iredell	Hospice of Iredell County, Inc	13	554	13
HOS3051	Davidson	Liberty Home Care and Hospice	2	51	0
HC1498	Yadkin	Mountain Valley Hospice and Palliative Care	3	190	1
HOS3918	Rowan	Rowan Regional Hospice	1	1	1
		Totals for Davie	156	16,457	142
Agencies or Offices serving residents of Duplin					
HC0228	Wayne	3HC	5	31	5
HC0255	Sampson	3HC	15	1,823	9
HOS1302	Wayne	Carolina East Home Care and Hospice, Inc	5	495	3
HC0053	Duplin	Carolina East Home Care and Hospice, Inc	85	12,919	54
HOS3075	Randolph	Community Home Care and Hospice	1	39	0
HOS2984	Lenoir	Community Home Care and Hospice	8	1,230	3
HC1844	Sampson	Community Home Care and Hospice	22	2,713	4
HC1209	Onslow	Continuum II Home Care and Hospice	0	142	0
HOS3054	Sampson	Liberty Home Care and Hospice	4	939	1
HOS3052	Pender	Lower Cape Fear Hospice and Life Care Center	22	942	18
		Totals for Duplin	167	21,273	97
Agencies or Offices serving residents of Durham					
HC0507	Johnston	3HC	4	120	4
HOS3147	Wake	Amedisys Hospice	9	1,065	7
HOS2958	Durham	Community Home Care and Hospice	16	1,141	12
HOS0021	Durham	Duke Hospice	472	28,754	413
HOS2281	Wake	Heartland Home Health Care and Hospice	77	7,441	63
HC0409	Forsyth	Hospice & Palliative Care Center	1	10	1
HC0361	Alamance	Hospice and Palliative Care Center of Alamance- Ca	6	121	5
HOS3126	Durham	Hospice of Wake County, Inc	4	66	3
HOS3304	Durham	Liberty Home Care and Hospice	12	845	6

Figures were taken from the 2010 Hospice Data Supplements. Data were self-reported and have not been verified by the Medical Facilities Planning Section.

Lic. #	Facility Cnty	Facility Name	Admissions	Days of Care	Deaths
HOS0370	Chatham	UNC Hospice	28	1,651	24
HOS3269	Nash	United Hospice of Eastern Carolina	15	1,959	12
Totals for Durham			644	43,173	550
Agencies or Offices serving residents of Edgecombe					
HC0228	Wayne	3HC	2	189	2
HC0508	Wilson	3HC	4	174	2
HOS0331	Pitt	AseraCare Hospice	26	2,617	18
HOS2985	Edgecombe	Community Home Care and Hospice	56	7,273	40
HOS2424	Nash	Community Home Care and Hospice	9	362	12
HOS2241	Wilson	Community Home Care and Hospice	1	92	1
HC0498	Edgecombe	Edgecombe HomeCare & Hospice	40	3,886	34
HC0393	Nash	Hospice and Palliative Care of Nash General Hospita	28	1,303	32
HOS3269	Nash	United Hospice of Eastern Carolina	6	725	4
HOS3292	Edgecombe	University Health Systems Home Health and Hospic	14	1,305	15
HOS0408	Wilson	WilMed Hospice	1	12	1
Totals for Edgecombe			187	17,938	161
Agencies or Offices serving residents of Forsyth					
HOS3075	Randolph	Community Home Care and Hospice	18	1,954	12
HOS3273	Iredell	Community Home Care and Hospice	37	2,662	9
HOS0372	Davidson	Hopice of Davidson County, Inc	2	343	2
HC0409	Forsyth	Hospice & Palliative Care Center	1,066	98,420	1,035
HOS3295	Stokes	Hospice & Palliative Care Center	16	1,652	13
HOS3084	Davie	Hospice & Palliative Care Center	4	448	3
HC0374	Guilford	Hospice and Palliative Care of Greensboro	5	141	4
HOS1581	Guilford	Hospice of the Piedmont, Inc	23	1,787	17
HOS3051	Davidson	LIberty Home Care and Hospice	1	13	1
HOS1001	Surry	Mountain Valley Hospice and Palliative Care	1	49	0
HC1498	Yadkin	Mountain Valley Hospice and Palliative Care	4	146	3
Totals for Forsyth			1,177	107,615	1,099
Agencies or Offices serving residents of Franklin					
HOS3826	Franklin	Amedisys Hospice	53	3,319	34
HOS2424	Nash	Community Home Care and Hospice	3	155	1
HOS3005	Franklin	Community Home Care and Hospice	34	3,655	31
HOS0021	Durham	Duke Hospice	4	246	5
HOS2125	Wake	Duke Hospice	5	199	5
HOS2281	Wake	Heartland Home Health Care and Hospice	6	482	3
HC0393	Nash	Hospice and Palliative Care of Nash General Hospita	1	52	1

Figures were taken from the 2010 Hospice Data Supplements. Data were self-reported and have not been verified by the Medical Facilities Planning Section.

Lic. #	Facility Cnty	Facility Name	Admissions	Days of Care	Deaths
HOS3125	Franklin	Hospice of Wake County, Inc	30	1,007	28
HOS3058	Wake	Liberty Home Care and Hospice	4	69	2
HOS3269	Nash	United Hospice of Eastern Carolina	9	866	7
Totals for Franklin			149	10,050	117
Agencies or Offices serving residents of Gaston					
HOS3116	Union	Community Home Care and Hospice	1	5	1
HOS3132	Mecklenburg	Hospice & Palliative Care Charlotte Region	8	566	6
HOS1702	Mecklenburg	Hospice & Palliative Care Lake Norman	1	32	0
HOS0389	Lincoln	Hospice & Palliative Care Lincoln County	37	2,853	31
HC0369	Mecklenburg	Hospice and Palliative Care Charlotte Region	7	859	5
HC0374	Guilford	Hospice and Palliative Care of Greensboro	1	8	1
HC0393	Nash	Hospice and Palliative Care of Nash General Hospita	1	4	1
HOS0371	Cleveland	Hospice of Cleveland, Inc	31	2,708	25
HC0812	Gaston	Hospice of Gaston County, Inc	910	49,806	790
HOS1581	Guilford	Hospice of the Piedmont, Inc	1	8	1
HOS1445	Mecklenburg	Prebyterian Hospice	6	259	8
Totals for Gaston			1,004	57,108	869
Agencies or Offices serving residents of Gates					
HOS1677	Pasquotank	Albermarle Hospice	6	88	6
HOS3301	Pasquotank	Community Home Care and Hospice	8	2,580	5
HOS0425	Hertford	University Health Systems Home Health and Hospic	12	394	10
Totals for Gates			26	3,062	21
Agencies or Offices serving residents of Graham					
HOS0113	Buncombe	Care Partners Hospice & Palliative Care Services	2	5	2
HC0157	Jackson	WestCare Home Health and Hospice Services	14	687	15
Totals for Graham			16	692	17
Agencies or Offices serving residents of Granville					
HOS3826	Franklin	Amedisys Hospice	30	2,426	20
HOS2561	Vance	Community Home Care and Hospice	29	2,030	28
HOS0021	Durham	Duke Hospice	48	2,914	37
HOS2281	Wake	Heartland Home Health Care and Hospice	8	302	7
HOS3133	Granville	Hospice of Wake County, Inc	3	170	2
HOS3269	Nash	United Hospice of Eastern Carolina	2	154	2
Totals for Granville			120	7,996	96
Agencies or Offices serving residents of Greene					
HC0195	Lenoir	3HC	5	675	3
HC0228	Wayne	3HC	8	40	8
HOS0331	Pitt	AseraCare Hospice	4	501	3

Figures were taken from the 2010 Hospice Data Supplements. Data were self-reported and have not been verified by the Medical Facilities Planning Section.

Lic. #	Facility Cnty	Facility Name	Admissions	Days of Care	Deaths
HOS2241	Wilson	Community Home Care and Hospice	22	2,247	22
HOS2984	Lenoir	Community Home Care and Hospice	11	765	7
HOS2996	Pitt	Community Home Care and Hospice	4	100	1
HOS3345	Pitt	United Hospice, Inc	2	660	0
HOS1711	Pitt	University Health Systems Home Health and Hospic	14	1,181	12
HOS0408	Wilson	WilMed Hospice	1	4	1
		Totals for Greene	71	6,173	57
Agencies or Offices serving residents of Guilford					
HOS3823	Alamance	Amedisys Hospice	5	262	0
HOS3075	Randolph	Community Home Care and Hospice	36	5,701	24
HOS3273	Iredell	Community Home Care and Hospice	6	160	1
HOS0372	Davidson	Hopice of Davidson County, Inc	2	135	2
HC0409	Forsyth	Hospice & Palliative Care Center	8	712	8
HOS3295	Stokes	Hospice & Palliative Care Center	3	160	2
HC0361	Alamance	Hospice and Palliative Care Center of Alamance- Ca	32	2,829	22
HC0374	Guilford	Hospice and Palliative Care of Greensboro	708	61,132	621
HOS3148	Guilford	Hospice and Palliative Care of Greensboro	272	40,863	217
HOS1581	Guilford	Hospice of the Piedmont, Inc	426	24,961	370
HOS3049	Alamance	Liberty Home Care and Hospice	24	5,232	15
HOS3051	Davidson	Liberty Home Care and Hospice	2	229	0
		Totals for Guilford	1,524	142,376	1,282
Agencies or Offices serving residents of Halifax					
HOS2996	Pitt	Community Home Care and Hospice	0	19	1
HOS2424	Nash	Community Home Care and Hospice	8	674	6
HOS3009	Halifax	Community Home Care and Hospice	45	3,335	37
HOS3256	Halifax	Continuum II Home Care & Hospice of Halifax Cou	6	285	1
HC0765	Halifax	Home Health and Hospice of Halifax	56	4,023	49
HC0374	Guilford	Hospice and Palliative Care of Greensboro	1	13	1
HC0393	Nash	Hospice and Palliative Care of Nash General Hospita	5	729	2
HOS3269	Nash	United Hospice of Eastern Carolina	18	1,008	14
HOS3292	Edgecombe	University Health Systems Home Health and Hospic	3	19	3
HOS0425	Hertford	University Health Systems Home Health and Hospic	3	119	2
		Totals for Halifax	145	10,224	116
Agencies or Offices serving residents of Harnett					
HC0255	Sampson	3HC	10	1,546	2
HC0507	Johnston	3HC	1	75	0
HOS3147	Wake	Amedisys Hospice	1	84	0

Figures were taken from the 2010 Hospice Data Supplements. Data were self-reported and have not been verified by the Medical Facilities Planning Section.

Lic. #	Facility Cnty	Facility Name	Admissions	Days of Care	Deaths
HC0283	Cumberland	Cape Fear Valley Home Care and Hospice	2	180	2
HOS2223	Wake	Community Home Care and Hospice	6	25	8
HOS2048	Harnett	Community Home Care and Hospice	77	7,919	35
HOS2561	Vance	Community Home Care and Hospice	2	14	1
HOS2034	Lee	Community Home Care and Hospice	32	7,822	26
HC1844	Sampson	Community Home Care and Hospice	1	7	1
HC1331	Cumberland	Community Home Care and Hospice	3	86	1
HOS2983	Chatham	Community Home Care and Hospice	1	92	1
HOS3690	Harnett	E. Carlton Powell Hospice Center	234	1,665	134
HC0427	Moore	First Health Hospice & Palliative Care	1	8	1
HC0359	Cumberland	HealthKeeperz	1	116	0
HOS2281	Wake	Heartland Home Health Care and Hospice	3	105	3
HOS0375	Harnett	Hospice of Harnett County, Inc	107	11,547	77
HOS3134	Harnett	Hospice of Wake County, Inc	20	2,367	15
HOS2004	Cumberland	Liberty Home Care and Hospice	1	134	0
HOS3069	Johnston	Liberty Home Care and Hospice	2	362	1
HOS3067	Harnett	Liberty Home Care and Hospice	39	4,372	24
HOS2861	Robeson	Native Angels Hospice	1	31	0
HOS0370	Chatham	UNC Hospice	0	365	0
HOS3346	Johnston	United Hospice of Eastern Carolina, Smithfield	5	814	3
Totals for Harnett			550	39,736	335
Agencies or Offices serving residents of Haywood					
HOS0113	Buncombe	Care Partners Hospice & Palliative Care Services	28	495	26
HOS3825	Haywood	HRMC Hospice & Palliative Care	273	18,715	237
HC0157	Jackson	WestCare Home Health and Hospice Services	4	69	4
Totals for Haywood			305	19,279	267
Agencies or Offices serving residents of Henderson					
HOS0113	Buncombe	Care Partners Hospice & Palliative Care Services	30	1,086	22
HOS0386	Henderson	Four Seasons Compassion for Life	826	77,748	768
HOS0396	Polk	Hospice of the Carolina Foothills, Inc	1	8	1
HC0067	Transylvania	TRH- Home Care	1	84	0
Totals for Henderson			858	78,926	791
Agencies or Offices serving residents of Hertford					
HOS3008	Martin	Community Home Care and Hospice	2	224	1
HOS3009	Halifax	Community Home Care and Hospice	2	38	0
HOS0425	Hertford	University Health Systems Home Health and Hospic	70	2,623	66
Totals for Hertford			74	2,885	67

Figures were taken from the 2010 Hospice Data Supplements. Data were self-reported and have not been verified by the Medical Facilities Planning Section.

Lic. #	Facility Cnty	Facility Name	Admissions	Days of Care	Deaths
Agencies or Offices serving residents of Hoke					
HC0283	Cumberland	Cape Fear Valley Home Care and Hospice	6	151	6
HC1331	Cumberland	Community Home Care and Hospice	9	365	9
HC0359	Cumberland	HealthKeeperz	2	55	2
HOS3031	Scotland	Hospice of Scotland County	2	22	2
HOS2004	Cumberland	Liberty Home Care and Hospice	0	36	1
HOS2290	Hoke	Liberty Home Care and Hospice	56	7,249	43
HOS2861	Robeson	Native Angels Hospice	3	417	1
HOS3346	Johnston	United Hospice of Eastern Carolina, Smithfield	0	316	1
Totals for Hoke			78	8,611	65
Agencies or Offices serving residents of Hyde					
HOS3302	Hyde	Community Home Care and Hospice	32	9,864	24
Totals for Hyde			32	9,864	24
Agencies or Offices serving residents of Iredell					
HOS3273	Iredell	Community Home Care and Hospice	7	979	1
HOS2425	Rowan	Hospice & Palliative Care Center	0	88	1
HC0409	Forsyth	Hospice & Palliative Care Center	1	2	1
HOS3084	Davie	Hospice & Palliative Care Center	1	84	1
HOS3132	Mecklenburg	Hospice & Palliative Care Charlotte Region	0	8	1
HOS1702	Mecklenburg	Hospice & Palliative Care Lake Norman	45	5,026	38
HOS0389	Lincoln	Hospice & Palliative Care Lincoln County	1	93	0
HC0369	Mecklenburg	Hospice and Palliative Care Charlotte Region	6	103	4
HOS0365	Cabarrus	Hospice of Cabarrus County, Inc	2	49	2
HOS1338	Iredell	Hospice of Iredell County, Inc	192	10,591	175
HOS0387	Iredell	Hospice of Iredell County, Inc	387	23,821	362
HOS0367	Catawba	Palliative Care Center & Hospice of Catawba Valley,	5	1,105	0
HOS1445	Mecklenburg	Prebyterian Hospice	1	10	1
HOS3918	Rowan	Rowan Regional Hospice	1	92	1
Totals for Iredell			649	42,051	588
Agencies or Offices serving residents of Jackson					
HOS0113	Buncombe	Care Partners Hospice & Palliative Care Services	6	82	3
HOS0390	Macon	Highlands-Cashiers Hospice	2	165	3
HC0157	Jackson	WestCare Home Health and Hospice Services	102	7,440	103
Totals for Jackson			110	7,687	109
Agencies or Offices serving residents of Johnston					
HC0228	Wayne	3HC	15	287	10
HC0255	Sampson	3HC	0	2	0
HC0507	Johnston	3HC	131	12,348	62

Figures were taken from the 2010 Hospice Data Supplements. Data were self-reported and have not been verified by the Medical Facilities Planning Section.

Lic. #	Facility Cnty	Facility Name	Admissions	Days of Care	Deaths
HC0508	Wilson	3HC	1	6	0
HC0509	Pitt	3HC	1	38	0
HOS2135	Johnston	Community Home Care and Hospice	68	5,909	48
HOS2241	Wilson	Community Home Care and Hospice	1	42	1
HOS2281	Wake	Heartland Home Health Care and Hospice	39	2,985	28
HOS0375	Harnett	Hospice of Harnett County, Inc	4	313	3
HOS3124	Johnston	Hospice of Wake County, Inc	51	2,409	49
HC0383	Johnston	Johnston Memorial Home Care and Hospice	84	3,767	78
HOS3069	Johnston	Liberty Home Care and Hospice	35	3,597	17
HOS3058	Wake	Liberty Home Care and Hospice	6	98	4
HOS3067	Harnett	Liberty Home Care and Hospice	0	87	2
HOS3346	Johnston	United Hospice of Eastern Carolina, Smithfield	16	1,660	5
HOS1711	Pitt	University Health Systems Home Health and Hospic	1	2	1
HOS0408	Wilson	WilMed Hospice	6	1,050	11
		Totals for Johnston	459	34,600	319
Agencies or Offices serving residents of Jones					
HC0228	Wayne	3HC	1	4	1
HC0506	Jones	3HC	10	187	8
HOS0331	Pitt	AseraCare Hospice	1	48	1
HOS3006	Onslow	Community Home Care and Hospice	2	494	1
HOS2984	Lenoir	Community Home Care and Hospice	2	87	1
HOS2302	Craven	Community Home Care and Hospice	5	1,779	3
HOS3238	Craven	Continuum Home Care & Hospice of Craven County	2	625	1
HC1209	Onslow	Continuum II Home Care and Hospice	2	698	2
HOS2005	Onslow	Liberty Home Care and Hospice	3	148	1
HOS3347	Craven	United Hospice of Coastal Carolina	0	131	3
		Totals for Jones	28	4,201	22
Agencies or Offices serving residents of Lee					
HOS3075	Randolph	Community Home Care and Hospice	1	27	0
HOS2034	Lee	Community Home Care and Hospice	134	8,059	103
HOS2048	Harnett	Community Home Care and Hospice	1	20	1
HOS2281	Wake	Heartland Home Health Care and Hospice	10	641	8
HOS0375	Harnett	Hospice of Harnett County, Inc	3	41	1
HOS3086	Lee	Liberty Home Care and Hospice	59	5,933	42
HOS2004	Cumberland	Liberty Home Care and Hospice	1	49	1
HOS0370	Chatham	UNC Hospice	9	288	10
HOS3346	Johnston	United Hospice of Eastern Carolina, Smithfield	1	367	0

Figures were taken from the 2010 Hospice Data Supplements. Data were self-reported and have not been verified by the Medical Facilities Planning Section.

Lic. #	Facility Cnty	Facility Name	Admissions	Days of Care	Deaths
Totals for Lee			219	15,425	166
Agencies or Offices serving residents of Lenoir					
HC0195	Lenoir	3HC	66	7,764	40
HC0228	Wayne	3HC	35	614	34
HC0506	Jones	3HC	0	62	0
HC0508	Wilson	3HC	0	30	0
HOS0331	Pitt	AseraCare Hospice	7	264	6
HOS1302	Wayne	Carolina East Home Care and Hospice, Inc	1	12	0
HOS2984	Lenoir	Community Home Care and Hospice	85	8,439	49
HOS3261	Lenoir	Continuum Home Care & Hospice of Lenoir County	21	3,167	9
HOS3345	Pitt	United Hospice, Inc	4	1,269	4
HOS1711	Pitt	University Health Systems Home Health and Hospic	11	280	13
Totals for Lenoir			230	21,901	155
Agencies or Offices serving residents of Lincoln					
HOS3273	Iredell	Community Home Care and Hospice	2	130	2
HC0409	Forsyth	Hospice & Palliative Care Center	1	2	0
HOS3132	Mecklenburg	Hospice & Palliative Care Charlotte Region	1	57	1
HOS1702	Mecklenburg	Hospice & Palliative Care Lake Norman	1	4	1
HOS0389	Lincoln	Hospice & Palliative Care Lincoln County	229	16,934	194
HC0369	Mecklenburg	Hospice and Palliative Care Charlotte Region	12	222	11
HOS0371	Cleveland	Hospice of Cleveland, Inc	4	703	2
HC0812	Gaston	Hospice of Gaston County, Inc	8	557	5
HOS1338	Iredell	Hospice of Iredell County, Inc	2	133	2
HOS0387	Iredell	Hospice of Iredell County, Inc	1	15	0
HOS0367	Catawba	Palliative Care Center & Hospice of Catawba Valley,	33	4,067	26
HOS1445	Mecklenburg	Prebyterian Hospice	4	395	2
Totals for Lincoln			298	23,219	246
Agencies or Offices serving residents of Macon					
HC0324	Macon	Angel Home Health & Hospice	94	8,025	86
HOS0113	Buncombe	Care Partners Hospice & Palliative Care Services	7	44	7
HOS0390	Macon	Highlands-Cashiers Hospice	19	1,118	14
HC0157	Jackson	WestCare Home Health and Hospice Services	13	311	11
Totals for Macon			133	9,498	118
Agencies or Offices serving residents of Madison					
HOS0113	Buncombe	Care Partners Hospice & Palliative Care Services	46	1,623	35
HC0419	Madison	Madison Home Care and Hospice	38	2,370	33
Totals for Madison			84	3,993	68

Figures were taken from the 2010 Hospice Data Supplements. Data were self-reported and have not been verified by the Medical Facilities Planning Section.

Lic. #	Facility Cnty	Facility Name	Admissions	Days of Care	Deaths
Agencies or Offices serving residents of Martin					
HOS0331	Pitt	AseraCare Hospice	9	423	8
HOS3008	Martin	Community Home Care and Hospice	41	3,690	36
HC0525	Martin	Roanoke Home Care and Hospice	22	1,293	23
HOS1711	Pitt	University Health Systems Home Health and Hospic	11	769	11
Totals for Martin			83	6,175	78
Agencies or Offices serving residents of McDowell					
HOS0364	Burke	Burke Hospice and Palliative Care, Inc	3	372	3
HOS0113	Buncombe	Care Partners Hospice & Palliative Care Services	17	204	15
HOS1153	McDowell	Hospice of McDowell County, Inc	134	9,312	99
HOS0400	Rutherford	Hospice of Rutherford County, Inc.	31	3,917	25
Totals for McDowell			185	13,805	142
Agencies or Offices serving residents of Mecklenburg					
HC0255	Sampson	3HC	0	23	0
HOS3116	Union	Community Home Care and Hospice	37	5,395	27
HC0409	Forsyth	Hospice & Palliative Care Center	1	15	1
HOS3132	Mecklenburg	Hospice & Palliative Care Charlotte Region	1,212	110,975	1,056
HOS1702	Mecklenburg	Hospice & Palliative Care Lake Norman	246	19,357	208
HOS0389	Lincoln	Hospice & Palliative Care Lincoln County	4	38	3
HC0369	Mecklenburg	Hospice and Palliative Care Charlotte Region	221	8,585	198
HOS0365	Cabarrus	Hospice of Cabarrus County, Inc	12	439	12
HC0812	Gaston	Hospice of Gaston County, Inc	8	691	5
HOS1338	Iredell	Hospice of Iredell County, Inc	12	763	11
HOS0387	Iredell	Hospice of Iredell County, Inc	1	25	1
HOS0405	Union	Hospice of Union County, Inc	10	838	9
HOS1445	Mecklenburg	Prebyterian Hospice	714	23,888	597
Totals for Mecklenburg			2,478	171,032	2,128
Agencies or Offices serving residents of Mitchell					
HOS0113	Buncombe	Care Partners Hospice & Palliative Care Services	4	14	4
HOS0363	Avery	Medi Home Hospice	0	150	0
HOS0832	Mitchell	The Hospice & Palliative Care Center of Mitchell Co	105	11,701	95
Totals for Mitchell			109	11,865	99
Agencies or Offices serving residents of Montgomery					
HOS3199	Montgomery	Community Home Care and Hospice	26	3,913	14
HOS3075	Randolph	Community Home Care and Hospice	0	75	0
HC0427	Moore	First Health Hospice & Palliative Care	40	4,726	33
HOS0402	Stanly	Hopice of Stanly County, Inc	22	2,338	17
HC0397	Randolph	Hospice of Randolph County, Inc	5	61	4

Figures were taken from the 2010 Hospice Data Supplements. Data were self-reported and have not been verified by the Medical Facilities Planning Section.

Lic. #	Facility Cnty	Facility Name	Admissions	Days of Care	Deaths
Totals for Montgomery			93	11,113	68
Agencies or Offices serving residents of Moore					
HOS2034	Lee	Community Home Care and Hospice	2	1,805	0
HOS3075	Randolph	Community Home Care and Hospice	1	13	0
HC2351	Moore	Community Home Care and Hospice	83	6,665	57
HC0427	Moore	First Health Hospice & Palliative Care	315	33,547	276
HC0359	Cumberland	HealthKeeperz	5	278	2
HC0397	Randolph	Hospice of Randolph County, Inc	1	11	1
HOS3086	Lee	Liberty Home Care and Hospice	2	7	2
HOS3050	Moore	Liberty Home Care and Hospice	21	4,146	10
HC0424	Richmond	Richmond County Hospice, Inc	1	66	1
Totals for Moore			431	46,538	349
Agencies or Offices serving residents of Nash					
HC0228	Wayne	3HC	1	9	1
HC0508	Wilson	3HC	10	450	9
HOS3826	Franklin	Amedisys Hospice	1	15	1
HOS2424	Nash	Community Home Care and Hospice	103	10,260	79
HOS2241	Wilson	Community Home Care and Hospice	2	122	2
HOS2281	Wake	Heartland Home Health Care and Hospice	1	153	1
HC0393	Nash	Hospice and Palliative Care of Nash General Hospita	157	7,357	146
HOS3269	Nash	United Hospice of Eastern Carolina	10	2,181	8
HOS3292	Edgecombe	University Health Systems Home Health and Hospic	11	120	10
HOS0408	Wilson	WilMed Hospice	6	348	6
Totals for Nash			302	21,015	263
Agencies or Offices serving residents of New Hanover					
HOS3010	Brunswick	Community Home Care and Hospice	26	1,533	19
HOS2007	Columbus	Liberty Home Care and Hospice	0	15	0
HOS2008	New Hanover	Liberty Home Care and Hospice	78	5,505	57
HOS0416	New Hanover	Lower Care Fear Hospice, Inc	821	56,168	722
Totals for New Hanover			925	63,221	798
Agencies or Offices serving residents of Northhampton					
HOS3009	Halifax	Community Home Care and Hospice	32	1,581	23
HC0765	Halifax	Home Health and Hospice of Halifax	1	16	1
HOS3269	Nash	United Hospice of Eastern Carolina	2	399	2
HOS0425	Hertford	University Health Systems Home Health and Hospic	19	1,155	18
Totals for Northhampton			54	3,151	44
Agencies or Offices serving residents of Onslow					
HC0228	Wayne	3HC	4	12	4

Figures were taken from the 2010 Hospice Data Supplements. Data were self-reported and have not been verified by the Medical Facilities Planning Section.

Lic. #	Facility Cnty	Facility Name	Admissions	Days of Care	Deaths
HC0506	Jones	3HC	17	1,591	11
HC0053	Duplin	Carolina East Home Care and Hospice, Inc	1	48	2
HOS3010	Brunswick	Community Home Care and Hospice	4	21	1
HOS2984	Lenoir	Community Home Care and Hospice	2	417	1
HOS3006	Onslow	Community Home Care and Hospice	5	1,719	5
HOS2998	Carteret	Community Home Care and Hospice	18	991	13
HOS2302	Craven	Community Home Care and Hospice	1	203	0
HOS3238	Craven	Continuum Home Care & Hospice of Craven County	1	828	3
HOS3261	Lenoir	Continuum Home Care & Hospice of Lenoir County	1	55	0
HC1209	Onslow	Continuum II Home Care and Hospice	102	6,885	89
HOS3048	Carteret	Liberty Home Care and Hospice	2	86	1
HOS2005	Onslow	Liberty Home Care and Hospice	40	2,246	26
HOS0416	New Hanover	Lower Care Fear Hospice, Inc	9	102	8
HC0531	Onslow	Onslow County Home Health and Hospice	37	2,858	34
HOS3347	Craven	United Hospice of Coastal Carolina	7	816	5
Totals for Onslow			251	18,878	203
Agencies or Offices serving residents of Orange					
HOS3147	Wake	Amedisys Hospice	2	75	0
HOS3823	Alamance	Amedisys Hospice	6	303	3
HOS2958	Durham	Community Home Care and Hospice	38	1,595	32
HOS0021	Durham	Duke Hospice	208	12,701	184
HOS2281	Wake	Heartland Home Health Care and Hospice	6	142	3
HC0361	Alamance	Hospice and Palliative Care Center of Alamance- Ca	19	1,635	16
HOS3304	Durham	Liberty Home Care and Hospice	7	987	4
HOS0370	Chatham	UNC Hospice	115	7,415	100
Totals for Orange			401	24,853	342
Agencies or Offices serving residents of Pamlico					
HOS2302	Craven	Community Home Care and Hospice	22	2,007	7
HOS3238	Craven	Continuum Home Care & Hospice of Craven County	1	34	0
HOS0394	Pamlico	Hospice of Pamlico County, Inc	20	1,059	20
HOS3347	Craven	United Hospice of Coastal Carolina	3	180	2
Totals for Pamlico			46	3,280	29
Agencies or Offices serving residents of Pasquotank					
HOS1677	Pasquotank	Albermarle Hospice	79	4,289	65
HOS3301	Pasquotank	Community Home Care and Hospice	43	2,178	27
Totals for Pasquotank			122	6,467	92

Figures were taken from the 2010 Hospice Data Supplements. Data were self-reported and have not been verified by the Medical Facilities Planning Section.

Lic. #	Facility Cnty	Facility Name	Admissions	Days of Care	Deaths
Agencies or Offices serving residents of Pender					
HC0053	Duplin	Carolina East Home Care and Hospice, Inc	5	212	2
HOS3010	Brunswick	Community Home Care and Hospice	11	1,600	2
HC1209	Onslow	Continuum II Home Care and Hospice	1	6	1
HOS3054	Sampson	Liberty Home Care and Hospice	1	35	1
HOS3059	Pender	Liberty Home Care and Hospice	1	79	0
HOS2008	New Hanover	Liberty Home Care and Hospice	5	111	4
HOS3052	Pender	Lower Cape Fear Hospice and Life Care Center	177	14,912	168
Totals for Pender			201	16,955	178
Agencies or Offices serving residents of Perquimans					
HOS1677	Pasquotank	Albermarle Hospice	20	1,531	21
HOS3301	Pasquotank	Community Home Care and Hospice	6	319	3
HOS0425	Hertford	University Health Systems Home Health and Hospic	1	14	1
Totals for Perquimans			27	1,864	25
Agencies or Offices serving residents of Person					
HOS2561	Vance	Community Home Care and Hospice	3	73	1
HOS2958	Durham	Community Home Care and Hospice	3	21	3
HOS0021	Durham	Duke Hospice	24	2,281	19
HOS2281	Wake	Heartland Home Health Care and Hospice	1	77	1
HC0533	Person	Home Health and Hospice of Person County	95	7,919	81
HC0361	Alamance	Hospice and Palliative Care Center of Alamance- Ca	2	26	2
HOS3304	Durham	Liberty Home Care and Hospice	1	20	0
HOS3269	Nash	United Hospice of Eastern Carolina	5	331	7
Totals for Person			134	10,748	114
Agencies or Offices serving residents of Pitt					
HC0195	Lenoir	3HC	2	445	0
HC0508	Wilson	3HC	0	5	0
HC0509	Pitt	3HC	43	3,458	26
HOS0331	Pitt	AseraCare Hospice	60	4,796	39
HOS2996	Pitt	Community Home Care and Hospice	116	15,835	91
HOS3345	Pitt	United Hospice, Inc	48	9,221	42
HOS1711	Pitt	University Health Systems Home Health and Hospic	200	10,213	189
Totals for Pitt			469	43,973	387
Agencies or Offices serving residents of Polk					
HOS0386	Henderson	Four Seasons Compassion for Life	6	252	5
HOS0400	Rutherford	Hospice of Rutherford County, Inc.	2	547	1
HOS0396	Polk	Hospice of the Carolina Foothills, Inc	160	14,578	152
Totals for Polk			168	15,377	158

Figures were taken from the 2010 Hospice Data Supplements. Data were self-reported and have not been verified by the Medical Facilities Planning Section.

Lic. #	Facility Cnty	Facility Name	Admissions	Days of Care	Deaths
Agencies or Offices serving residents of Randolph					
HOS2983	Chatham	Community Home Care and Hospice	2	120	1
HOS3075	Randolph	Community Home Care and Hospice	41	4,298	24
HC0427	Moore	First Health Hospice & Palliative Care	0	81	1
HOS0372	Davidson	Hopice of Davidson County, Inc	2	604	2
HC0361	Alamance	Hospice and Palliative Care Center of Alamance- Ca	3	79	2
HC0374	Guilford	Hospice and Palliative Care of Greensboro	8	410	6
HOS0365	Cabarrus	Hospice of Cabarrus County, Inc	1	6	1
HC0397	Randolph	Hospice of Randolph County, Inc	414	34,759	362
HOS1581	Guilford	Hospice of the Piedmont, Inc	82	4,899	82
		Totals for Randolph	553	45,256	481
Agencies or Offices serving residents of Richmond					
HOS3007	Richmond	Community Home Care and Hospice	65	10,006	16
HC0427	Moore	First Health Hospice & Palliative Care	1	300	1
HOS3031	Scotland	Hospice of Scotland County	27	5,004	27
HOS3064	Anson	Liberty Home Care and Hospice	11	1,474	7
HOS2861	Robeson	Native Angels Hospice	2	67	0
HC0424	Richmond	Richmond County Hospice, Inc	147	14,617	123
		Totals for Richmond	253	31,468	174
Agencies or Offices serving residents of Robeson					
HC0255	Sampson	3HC	1	6	1
HC0283	Cumberland	Cape Fear Valley Home Care and Hospice	8	708	6
HC1331	Cumberland	Community Home Care and Hospice	1	22	0
HOS2060	Robeson	Community Home Care and Hospice	87	16,250	37
HC0359	Cumberland	HealthKeeperz	40	2,976	19
HOS3031	Scotland	Hospice of Scotland County	39	3,429	31
HOS2004	Cumberland	Liberty Home Care and Hospice	1	30	1
HOS2290	Hoke	Liberty Home Care and Hospice	11	1,116	13
HOS3066	Robeson	Liberty Home Care and Hospice	68	14,347	43
HOS2861	Robeson	Native Angels Hospice	102	14,722	31
HC0424	Richmond	Richmond County Hospice, Inc	1	79	1
HOS1599	Robeson	Southeastern Hospice	265	9,926	198
		Totals for Robeson	624	63,611	381
Agencies or Offices serving residents of Rockingham					
HOS3823	Alamance	Amedisys Hospice	2	133	0
HC0409	Forsyth	Hospice & Palliative Care Center	1	18	1
HOS3295	Stokes	Hospice & Palliative Care Center	4	297	2

Figures were taken from the 2010 Hospice Data Supplements. Data were self-reported and have not been verified by the Medical Facilities Planning Section.

Lic. #	Facility Cnty	Facility Name	Admissions	Days of Care	Deaths
HC0361	Alamance	Hospice and Palliative Care Center of Alamance- Ca	3	398	4
HC0374	Guilford	Hospice and Palliative Care of Greensboro	4	302	1
HOS0554	Stokes	Hospice of Stokes County	1	10	1
HOS0398	Rockingham	Hospice of Rockingham County, Inc	338	16,187	303
HOS3049	Alamance	Liberty Home Care and Hospice	1	79	1
		Totals for Rockingham	354	17,424	313
Agencies or Offices serving residents of Rowan					
HOS3273	Iredell	Community Home Care and Hospice	2	185	0
HOS0372	Davidson	Hospice of Davidson County, Inc	1	14	0
HOS0402	Stanly	Hospice of Stanly County, Inc	1	9	1
HOS2425	Rowan	Hospice & Palliative Care Center	95	10,283	82
HC0409	Forsyth	Hospice & Palliative Care Center	4	172	6
HC0369	Mecklenburg	Hospice and Palliative Care Charlotte Region	2	11	2
HOS0365	Cabarrus	Hospice of Cabarrus County, Inc	84	5,323	80
HOS0387	Iredell	Hospice of Iredell County, Inc	1	1	1
HOS3051	Davidson	Liberty Home Care and Hospice	6	262	4
HOS3918	Rowan	Rowan Regional Hospice	329	21,835	263
		Totals for Rowan	525	38,095	439
Agencies or Offices serving residents of Rutherford					
HOS0371	Cleveland	Hospice of Cleveland, Inc	3	534	3
HOS0400	Rutherford	Hospice of Rutherford County, Inc.	475	49,183	389
		Totals for Rutherford	478	49,717	392
Agencies or Offices serving residents of Sampson					
HC0255	Sampson	3HC	67	8,134	32
HC0228	Wayne	3HC	17	395	17
HC0283	Cumberland	Cape Fear Valley Home Care and Hospice	5	341	4
HC0053	Duplin	Carolina East Home Care and Hospice, Inc	2	146	2
HC1844	Sampson	Community Home Care and Hospice	70	9,923	48
HOS1945	Bladen	Community Home Care and Hospice	1	14	1
HC0359	Cumberland	HealthKeeperz	1	3	1
HOS0375	Harnett	Hospice of Harnett County, Inc	1	100	1
HOS2004	Cumberland	Liberty Home Care and Hospice	1	300	0
HOS3054	Sampson	Liberty Home Care and Hospice	46	5,670	29
HOS3067	Harnett	Liberty Home Care and Hospice	2	137	0
HOS3069	Johnston	Liberty Home Care and Hospice	1	74	1
HOS0415	Bladen	Lower Cape Fear Hospice, Inc	5	131	6
HOS3346	Johnston	United Hospice of Eastern Carolina, Smithfield	3	971	0

Figures were taken from the 2010 Hospice Data Supplements. Data were self-reported and have not been verified by the Medical Facilities Planning Section.

Lic. #	Facility Cnty	Facility Name	Admissions	Days of Care	Deaths
Totals for Sampson			222	26,339	142
Agencies or Offices serving residents of Scotland					
HOS2060	Robeson	Community Home Care and Hospice	1	4	0
HC0359	Cumberland	HealthKeeperz	6	643	3
HOS3031	Scotland	Hospice of Scotland County	165	15,167	175
HOS2290	Hoke	Liberty Home Care and Hospice	0	365	0
HOS3064	Anson	Liberty Home Care and Hospice	1	134	1
HOS2861	Robeson	Native Angels Hospice	7	1,135	2
HC0424	Richmond	Richmond County Hospice, Inc	2	77	1
Totals for Scotland			182	17,525	182
Agencies or Offices serving residents of Stanly					
HOS3199	Montgomery	Community Home Care and Hospice	1	18	1
HOS0402	Stanly	Hopice of Stanly County, Inc	258	12,968	240
HOS1702	Mecklenburg	Hospice & Palliative Care Lake Norman	1	95	1
HOS0365	Cabarrus	Hospice of Cabarrus County, Inc	13	251	11
Totals for Stanly			273	13,332	253
Agencies or Offices serving residents of Stokes					
HC0409	Forsyth	Hospice & Palliative Care Center	43	5,004	38
HOS3295	Stokes	Hospice & Palliative Care Center	118	12,163	105
HOS0554	Stokes	Hospice of Stokes County	43	5,471	42
HC1498	Yadkin	Mountain Valley Hospice and Palliative Care	1	110	0
HOS0404	Surry	Mountain Valley Hospice and Palliative Care	24	2,347	14
Totals for Stokes			229	25,095	199
Agencies or Offices serving residents of Surry					
HC0409	Forsyth	Hospice & Palliative Care Center	7	354	12
HOS3295	Stokes	Hospice & Palliative Care Center	7	744	5
HOS0554	Stokes	Hospice of Stokes County	1	131	1
HC1498	Yadkin	Mountain Valley Hospice and Palliative Care	12	544	7
HOS0404	Surry	Mountain Valley Hospice and Palliative Care	301	39,604	244
HOS1001	Surry	Mountain Valley Hospice and Palliative Care	79	6,678	58
Totals for Surry			407	48,055	327
Agencies or Offices serving residents of Swain					
HC0298	Swain	Angel Home Health & Hospice	11	916	5
HOS0113	Buncombe	Care Partners Hospice & Palliative Care Services	3	28	3
HC0157	Jackson	WestCare Home Health and Hospice Services	46	2,409	43
Totals for Swain			60	3,353	51
Agencies or Offices serving residents of Transylvania					
HOS0113	Buncombe	Care Partners Hospice & Palliative Care Services	2	11	2

Figures were taken from the 2010 Hospice Data Supplements. Data were self-reported and have not been verified by the Medical Facilities Planning Section.

Lic. #	Facility Cnty	Facility Name	Admissions	Days of Care	Deaths
HOS0386	Henderson	Four Seasons Compassion for Life	18	1,419	6
HC0067	Transylvania	TRH- Home Care	149	10,547	127
		Totals for Transylvania	169	11,977	135
Agencies or Offices serving residents of Tyrrell					
HOS3302	Hyde	Community Home Care and Hospice	3	65	2
HC0524	Tyrrell	Roanoke Home Care and Hospice	1	2	1
		Totals for Tyrrell	4	67	3
Agencies or Offices serving residents of Union					
HOS3116	Union	Community Home Care and Hospice	16	2,218	10
HOS3132	Mecklenburg	Hospice & Palliative Care Charlotte Region	148	8,917	131
HC0369	Mecklenburg	Hospice and Palliative Care Charlotte Region	46	2,530	39
HOS0365	Cabarrus	Hospice of Cabarrus County, Inc	1	31	1
HC0812	Gaston	Hospice of Gaston County, Inc	1	8	0
HOS0405	Union	Hospice of Union County, Inc	233	12,078	178
HOS1445	Mecklenburg	Prebyterian Hospice	22	974	19
		Totals for Union	467	26,756	378
Agencies or Offices serving residents of Vance					
HOS3826	Franklin	Amedisys Hospice	22	1,263	18
HOS2561	Vance	Community Home Care and Hospice	61	5,298	55
HOS0021	Durham	Duke Hospice	10	488	11
HOS2281	Wake	Heartland Home Health Care and Hospice	1	39	1
HOS3269	Nash	United Hospice of Eastern Carolina	3	341	5
		Totals for Vance	97	7,429	90
Agencies or Offices serving residents of Wake					
HC0228	Wayne	3HC	2	28	2
HC0507	Johnston	3HC	17	1,125	10
HC0508	Wilson	3HC	1	0	1
HOS3826	Franklin	Amedisys Hospice	19	1,457	10
HOS3147	Wake	Amedisys Hospice	42	3,642	25
HOS0113	Buncombe	Care Partners Hospice & Palliative Care Services	1	23	1
HOS3005	Franklin	Community Home Care and Hospice	1	331	0
HOS2048	Harnett	Community Home Care and Hospice	3	85	2
HOS2223	Wake	Community Home Care and Hospice	71	7,084	53
HOS0021	Durham	Duke Hospice	16	958	16
HOS2125	Wake	Duke Hospice	158	6,350	139
HOS2281	Wake	Heartland Home Health Care and Hospice	295	20,606	248
HC0393	Nash	Hospice and Palliative Care of Nash General Hospita	1	7	1

Figures were taken from the 2010 Hospice Data Supplements. Data were self-reported and have not been verified by the Medical Facilities Planning Section.

Lic. #	Facility Cnty	Facility Name	Admissions	Days of Care	Deaths
HOS1595	Wake	Hospice of Wake County, Inc	1,263	88,721	1,076
HC0383	Johnston	Johnston Memorial Home Care and Hospice	5	110	4
HOS3058	Wake	Liberty Home Care and Hospice	103	7,667	72
HOS3067	Harnett	Liberty Home Care and Hospice	3	399	2
HOS3069	Johnston	Liberty Home Care and Hospice	1	147	0
HOS3269	Nash	United Hospice of Eastern Carolina	62	6,758	40
Totals for Wake			2,064	145,498	1,702
Agencies or Offices serving residents of Warren					
HOS3826	Franklin	Amedisys Hospice	12	667	7
HOS2561	Vance	Community Home Care and Hospice	12	1,175	13
HOS3005	Franklin	Community Home Care and Hospice	14	732	13
HOS3009	Halifax	Community Home Care and Hospice	4	135	3
HC0765	Halifax	Home Health and Hospice of Halifax	2	27	2
HOS3269	Nash	United Hospice of Eastern Carolina	5	151	6
Totals for Warren			49	2,887	44
Agencies or Offices serving residents of Washington					
HOS0331	Pitt	AseraCare Hospice	3	230	2
HOS3008	Martin	Community Home Care and Hospice	6	514	9
HC0523	Washington	Roanoke Home Care and Hospice	14	199	12
HOS0425	Hertford	University Health Systems Home Health and Hospic	7	257	7
HOS1711	Pitt	University Health Systems Home Health and Hospic	1	2	1
Totals for Washington			31	1,202	31
Agencies or Offices serving residents of Watauga					
HOS1122	Watauga	High Country Health Care System	75	7,021	63
HOS0363	Avery	Medi Home Hospice	1	160	2
HOS0367	Catawba	Palliative Care Center & Hospice of Catawba Valley,	1	50	0
Totals for Watauga			77	7,231	65
Agencies or Offices serving residents of Wayne					
HC0228	Wayne	3HC	312	16,639	234
HC0508	Wilson	3HC	1	0	0
HC0255	Sampson	3HC	3	499	1
HC0195	Lenoir	3HC	0	44	0
HC0507	Johnston	3HC	0	72	0
HOS1302	Wayne	Carolina East Home Care and Hospice, Inc	5	256	4
HC2361	Wayne	Community Home Care and Hospice	64	8,116	39
HOS3261	Lenoir	Continuum Home Care & Hospice of Lenoir County	7	1,442	3
HOS3346	Johnston	United Hospice of Eastern Carolina, Smithfield	12	1,762	2

Figures were taken from the 2010 Hospice Data Supplements. Data were self-reported and have not been verified by the Medical Facilities Planning Section.

Lic. #	Facility Cnty	Facility Name	Admissions	Days of Care	Deaths
HOS1711	Pitt	University Health Systems Home Health and Hospic	1	7	0
HOS3292	Edgecombe	University Health Systems Home Health and Hospic	2	57	1
HOS0408	Wilson	WilMed Hospice	2	93	1
Totals for Wayne			409	28,987	285
Agencies or Offices serving residents of Wilkes					
HOS0185	Caldwell	Caldwell Hospice and Palliative Care, Inc	1	33	1
HC0409	Forsyth	Hospice & Palliative Care Center	5	141	3
HOS0387	Iredell	Hospice of Iredell County, Inc	8	133	8
HOS0407	Wilkes	Hospice of Wilkes Regional Medical Center	133	7,773	134
HOS0404	Surry	Mountain Valley Hospice and Palliative Care	0	314	1
HOS1001	Surry	Mountain Valley Hospice and Palliative Care	42	1,981	37
Totals for Wilkes			189	10,375	184
Agencies or Offices serving residents of Wilson					
HC0228	Wayne	3HC	5	111	4
HC0507	Johnston	3HC	1	182	0
HC0508	Wilson	3HC	30	1,916	17
HOS2241	Wilson	Community Home Care and Hospice	101	10,617	90
HC0393	Nash	Hospice and Palliative Care of Nash General Hospita	6	486	6
HOS3269	Nash	United Hospice of Eastern Carolina	4	450	3
HOS3292	Edgecombe	University Health Systems Home Health and Hospic	10	630	8
HOS1711	Pitt	University Health Systems Home Health and Hospic	1	2	1
HOS0408	Wilson	WilMed Hospice	75	4,915	65
Totals for Wilson			233	19,309	194
Agencies or Offices serving residents of Yadkin					
HC0409	Forsyth	Hospice & Palliative Care Center	29	412	25
HOS3084	Davie	Hospice & Palliative Care Center	7	978	8
HC1498	Yadkin	Mountain Valley Hospice and Palliative Care	89	8,925	69
HOS0404	Surry	Mountain Valley Hospice and Palliative Care	1	439	1
HOS1001	Surry	Mountain Valley Hospice and Palliative Care	12	1,269	12
Totals for Yadkin			138	12,023	115
Agencies or Offices serving residents of Yancey					
HOS0113	Buncombe	Care Partners Hospice & Palliative Care Services	6	35	5
HOS1027	Yancey	Hospice of Yancey, County	107	18,366	90
HOS0832	Mitchell	The Hospice & Palliative Care Center of Mitchell Co	2	130	1
Totals for Yancey			115	18,531	96
Grand Total			33,460	2,650,416	27,533

Figures were taken from the 2010 Hospice Data Supplements. Data were self-reported and have not been verified by the Medical Facilities Planning Section.

6/21/2010

Table 13B: Year 2012 Hospice Home Care Office Need Projections for Proposed 2011 Plan

Column A	Column B	Column C	Column D	Column E	Column F	Column G	Column H	Column I	Column J	Column K	Column L	Column M	Column N
Source or Formula =>	2004-2008 Death Rate/1000 Population	2012 Population (excluding military) 5/4/2010	Projected 2012 Deaths	2009 Reported # of Hospice Patient Deaths	2012 # of Hospice Deaths Served at Two Year Trailing Average Growth Rate	2012 # of Hospice Deaths Served Limited to 50%	Projected 2012 # of Hospice Deaths Served	Median Projected 2012 Hospice Deaths	Place-holder for New Hospice Office	Projected Number of Additional Patients in Need Surplus (Deficit)	Licensed Home Care Offices in County	Lic. Home Care Offices in Cty per 100,000	Additional Hospice Office Need
Office of State Budget and Management	Deaths - NC Vital Statistics	Col. B x (Col. C/1000)	Col. B x (Col. C/1000)	2009 Lic. Data Supplement	Col. E x 3 Yrs Growth at 5.2% annually	Col. D x 60%	Lower # of Deaths between Col. F and Col. G	Col. D x Proj. Statewide Median Percent Deaths Served (37.7%)	Col. H + Col. J - Col. I	2009 Lic. Data Supplement	Col. L / (Col. C / 100,000)	Col. M <= 3 and Col. K <= 50	
North Carolina	8.4	9,709,989	81,564	27,533	32,021	48,938	32,021	27,516	180	4,686	241	3.8	0
Alamance	9.7	154,410	1,498	622	723	899	723	505		218	4	2.6	
Alexander	8.8	36,215	335	133	155	202	155	113		41	1	2.6	
Alleghany	12.4	11,464	142	39	45	85	45	48		(3)	1	8.7	
Anson	11.1	25,021	278	38	44	187	44	84		(49)	3	12.0	
Ashie	11.6	27,083	314	61	71	189	71	106		(35)	1	3.7	
Avery	10.2	16,288	187	36	42	112	42	63		(21)	1	5.5	
Beaufort	11.6	47,989	556	169	197	334	197	188		9	2	4.2	
Bertie	12.3	19,970	246	52	60	147	60	83		(22)	0	0.0	
Bladen	11.8	31,631	373	107	124	224	124	136		(1)	4	12.6	
Brunswick	9.8	116,609	1,119	382	456	672	456	378		78	4	3.4	
Buncombe	10	238,442	2,384	864	1,121	1,431	1,121	804		317	1	0.4	
Burke	9.9	90,747	888	350	407	539	407	303		104	1	1.1	
Cabarrus	8	189,120	1,513	529	615	908	615	510		105	2	1.1	
Caldwell	10	81,373	814	407	473	488	473	275		189	1	1.2	
Camden	7.5	9,579	72	12	14	43	14	24		(10)	0	0.0	
Carteret	10.9	65,934	719	214	249	431	249	242		6	4	6.1	
Caswell	10.2	23,210	237	54	63	142	63	80		(17)	0	0.0	
Catawba	9.1	162,864	1,482	747	869	889	869	500		369	1	0.6	
Chatham	9.1	65,935	600	168	185	380	185	202		(7)	4	6.1	
Cherokee	12.1	28,084	340	71	83	204	83	115		58	1	3.6	
Chowan	12.7	14,977	190	28	34	114	34	64		(30)	1	6.7	
Clay	11.9	11,107	132	23	27	79	27	45		(18)	1	9.0	
Cleveland	10.7	100,071	1,071	511	594	642	594	361		233	1	1.0	
Columbus	11.9	57,065	679	211	245	407	245	229		16	4	7.0	
Craven*	9.6	85,542	817	247	287	550	287	308		(22)	4	4.2	
Cumberland*	6.7	295,832	1,962	811	711	1,189	711	689		42	8	2.7	
Currituck	7.9	22,646	179	62	72	107	72	60		12	0	0.0	
Dare	7.6	33,821	257	77	90	154	90	87		3	2	5.9	
Davidson	9.4	165,396	1,555	480	558	933	558	524		34	3	1.8	
Davidson	8.8	43,764	385	142	165	231	165	130		35	2	4.6	
Duplin	9.6	54,981	528	97	113	317	113	178		(85)	4	7.3	
Durham	6.9	282,707	1,951	550	640	1,170	640	658		187	6	2.1	
Edgecombe	11.3	51,227	579	161	187	347	187	195		(6)	3	5.9	

Table 13B: Year 2012 Hospice Home Care Office Need Projections for Proposed 2011 Plan

Column A	Column B	Column C	Column D	Column E	Column F	Column G	Column H	Column I	Column J	Column K	Column L	Column M	Column N
	2004-2008 Death Rate/1000 Population	2012 Population (excluding military) 5/12/2010	Projected 2012 Deaths	2009 Reported # of Hospice Patient Deaths	2012 # of Hospice Deaths Served at Two Year Trailing Average Growth Rate	2012 # of Hospice Deaths Served Limited to 50%	Projected 2012 # of Hospice Deaths Served	Median Projected 2012 Hospice Deaths	Places-holder for New Hospice Office	Projected Number of Additional Patients in Need Surplus (Deficit)	Licensed Home Care Offices in County	Lic. Home Care Offices in City per 100,000	Additional Hospice Office Need
Source or Formula =>	Deaths - NC Vital Statistics	Office of State Budget and Management.	Col. B x (Col. C)/(1000)	2009 Lic. Date Supplements	Col. E x 3 Yrs Growth at 5.2% annually	Col. D x 60%	Lower # of Deaths between Col. F and Col. G	Col. D x Proj. Statewide Median Percent Deaths Served (33.7%)		Col. H + Col. J - Col. I	2009 Lic. Date Supplement	Col. L / (Col. C / 100,000)	If Col. M <= 3 and Col. K <= 40
Forsyth	8.5	373,030	3,171	1098	1,278	1,902	1,278	1,070		209	2	0.5	
Franklin	8.2	62,501	513	117	136	308	136	173		(37)	4	6.4	
Gaston	10	213,760	2,138	869	1,011	1,283	1,011	721		280	1	0.5	
Gates	10.1	12,003	121	21	24	73	24	41		(16)	0	0.0	
Graham	12.1	8,481	103	17	20	62	20	35		(63)	2	3.4	
Granville	9.1	58,906	536	96	112	322	112	181		146	4	0.8	
Greene	8.7	21,948	191	57	66	115	66	84		2	1	4.6	
Guilford	8	498,381	3,987	1262	1,491	2,392	1,491	1,345		71	1	1.7	
Haywood	12	59,167	710	267	311	426	311	240		367	1	0.9	
Henderson	12.6	110,834	1,397	791	920	838	838	471		(18)	1	4.2	
Hertford	11.9	23,939	285	87	78	185	78	96		171	1	4.1	
Hoke*	6.4	48,258	309	65	76	185	76	104		6	1	18.7	
Hyde	12.1	5,341	65	24	28	39	28	22		200	3	1.8	
Jackson	8.7	164,767	1,433	588	684	860	684	484		7	1	2.5	
Jaredell	8.9	39,747	354	109	127	212	127	119		(54)	8	4.3	
Johnston	7	184,404	1,291	319	371	774	371	455		153	2	9.8	
Jones	10.8	10,156	109	22	26	65	26	36		(11)	1	3.3	
Lee	9	61,059	550	166	193	330	193	185		8	2	3.3	
Lenoir	11.6	56,480	655	155	180	393	180	221		(41)	3	5.3	
Lincoln	8.4	79,511	668	246	286	401	286	225		61	1	1.3	
Macon	12.7	36,293	461	118	137	277	137	155		(12)	3	8.3	
Madison	11.1	21,242	236	68	79	141	79	80		(9)	1	4.7	
Martin	13.2	23,659	312	78	91	187	91	105		(15)	3	12.7	
McDowell	10.2	45,611	465	142	165	279	165	157		8	1	2.2	
Mecklenburg	5.9	939,579	5,544	2,128	2,475	3,326	2,475	1,870		605	6	0.6	
Mitchell	12.3	16,185	189	99	115	119	115	87		48	1	6.2	
Montgomery	9.8	28,411	273	68	79	164	79	92		(13)	1	3.5	
Moore*	11.8	90,626	1,051	349	406	631	406	355		51	3	3.3	
Nash	9.9	99,609	986	263	306	592	306	333		(27)	4	4.0	
New Hanover	8.2	200,300	1,643	798	928	986	928	554		374	3	1.5	
Northampton	13.2	20,841	275	44	51	165	51	83		(42)	1	4.8	
Onslow*	5.1	135,897	785	203	236	477	236	288		(32)	4	2.6	
Orange	5.6	136,874	766	342	398	398	398	259		139	3	2.2	
Pamlico	11.4	12,866	147	29	34	88	34	49		(16)	2	15.5	
Pasquotank	9.1	41,819	381	92	107	228	107	128		(21)	2	4.8	

Table 13B: Year 2012 Hospice Home Care Office Need Projections for Proposed 2011 Plan

Column A	Column B	Column C	Column D	Column E	Column F	Column G	Column H	Column I	Column J	Column K	Column L	Column M	Column N
Source or Formula =>	2004-2008 Death Rate/1000 Population	2012 Population (excluding military) 5/4/2010	Projected 2012 Deaths	2009 Reported # of Hospice Patient Deaths	2012 # of Hospice Deaths Served at Two Year Trailing Average Growth Rate	2012 # of Hospice Deaths Served Limited to 60%	Projected 2012 # of Hospice Deaths Served	Median Projected 2012 Hospice Deaths	Places-holder for New Hospice Office	Projected Number of Additional Patients in Need Surplus (Deficit)	Licensed Home Care Offices in County	Lic. Home Care Offices in City per 100,000	Additional Hospice Office Need
	Deaths - NC Vital Statistics	Office of State Budget and Management	Col. B x (Col. C/1000)	2009 Lic. Data Supplements	Col. E x 3 Yrs Growth at 5.2% annually	Col. D x 60%	Lower # of Deaths between Col. F and Col. G	Col. D x Proj. Statewide Median Percent Deaths Served (33.7%)		Col. H + Col. J - Col. I	2009 Lic. Data Supplement	Col. L / (Col. C / 100,000)	If Col. M <= 3 and Col. K <= 90
Pender	8.7	57,592	501	178	207	301	207	169		38	4	6.9	
Perquimans	11.9	13,344	159	25	29	95	29	54		(24)	0	0.0	
Person	10.5	39,174	411	114	139	247	139	139		(6)	1	2.6	
Pitt	7.4	166,527	1,247	387	450	748	450	421		29	7	4.2	
Polk	15	19,865	288	158	184	179	179	101		78	1	5.0	
Randolph	8.9	147,508	1,313	481	558	788	558	443		117	2	1.4	
Richmond	11.2	47,016	527	174	202	316	202	178		25	2	4.3	
Robeson	9.2	134,161	1,234	381	443	741	443	416		27	6	4.5	
Rockingham	11.5	92,412	1,063	313	364	638	364	359		6	2	2.2	
Rowan	10	144,331	1,443	439	511	866	511	487		24	3	2.1	
Rutherford	12.6	64,711	815	392	456	489	456	275		181	1	1.5	
Sampson	9.5	66,998	636	142	165	382	165	215		(50)	4	6.0	
Scotland	10.3	36,956	381	182	212	228	212	128		83	1	2.7	
Stanly	10.1	61,225	618	253	284	371	284	209		86	2	3.3	
Stokes	9.5	47,281	449	199	231	270	231	152		80	2	4.2	
Surry	11.2	75,334	844	327	390	506	390	285		96	3	4.0	
Swain	12.6	14,626	184	51	59	111	59	62		(3)	1	6.8	
Transylvania	11.8	31,900	376	135	157	226	157	127		30	1	3.1	
Tyrrell	9.2	4,247	39	3	3	23	3	13		(10)	1	23.5	
Union	5.9	211,105	1,246	378	440	747	440	420		19	5	2.4	
Vance	10.4	43,606	454	90	105	272	105	153		(49)	2	4.6	
Wake*	4.8	975,032	4,680	1,702	1,979	2,808	1,979	1,579		401	9	0.9	
Warren	11.1	19,741	219	44	51	131	51	74		(23)	0	0.0	
Washington	11.8	12,898	150	31	36	90	36	50		(14)	2	15.5	
Watauga	6.7	46,483	311	65	76	187	76	105		(29)	1	2.2	
Wayne*	9.3	114,294	1,063	285	331	638	331	359		(27)	5	4.4	
Wilkes	10.1	68,489	692	184	214	415	214	233		90	3	4.4	
Wilson	10.1	82,052	828	194	226	497	226	280		(54)	5	6.1	
Yadkin	10	36,383	384	115	134	230	134	129		4	1	2.8	
Yancey	11	18,538	207	96	112	124	112	70		42	1	5.3	

*population projections were adjusted to exclude active duty military personnel.

Table 13C: Year 2014 Hospice Inpatient Bed Need Projections for the 2011 Plan

Column A	Column B	Column C	Column D	Column E	Column F	Column G	Column H	Column I	Column J	Column K	Column L	Column M	Column N	Column O
County	Total Admissions (2009 data)	Total Days of Care (2009 Data)	ALOS per Admission	Total 2014 Admissions	2014 Days of Care at County ALOS	2014 Days of Care at Statewide ALOS	Projected 2014 Days of Care of Inpatient Estimates	Projected Inpatient Days	Projected Total Inpatient Beds	Currently Licensed Beds	CON Appv'd/Lic. Pending/Prev. Need Determ.	Adjusted Projected Beds	Existing Facility Occupancy Rate	Deficit/(Surplus) Adjusted for facilities not at 85% occupancy (Col. N)
Source of Formula =>	2009 Lic. Data Supplement	2009 Lic. Data Supplement	Col. C / Col. B	Col. B x 5 Yrs Growth at 4.1% annually	Col. D x Col. E	Col. E x Statewide Median ALOS per Admission (75.4)	Lower # of Days of Care between Col. F and Col. G	Col. H * 6%	(Col. I/265) / 85%	Licensure Inventory		Col. J - (Col. K + Col. L)	2009 Lic. Data Supplement	
Alamance	765	60,749	79.4	933	74,080	70,348	70,348	4,221	14	8	6	0	72.60%	0
Alexander	169	10,280	60.8	206	12,525	15,532	12,525	752	2	2	3	1		(1)
Alleghany	50	3,769	75.4	61	4,599	4,599	4,599	276	1			1		1
Anson	45	3,533	78.5	55	4,318	4,147	4,147	249	1	1		1		1
Ashe	80	8,346	104.3	98	10,221	7,389	7,389	443	1	1		1		1
Avery	53	4,993	94.2	65	6,104	4,901	4,901	294	1	1	6	1		1
Beaufort	236	26,126	110.7	288	31,883	21,715	21,715	1,303	4	4		2		(2)
Bertie	61	2,904	47.6	74	3,523	5,580	3,523	211	1	1		1		1
Bladen	154	14,975	97.2	188	18,307	14,175	14,175	851	3	3		3		3
Brunswick	475	38,282	80.6	579	46,664	43,657	43,657	2,619	8	8	7	1		1
Buncombe	1,085	73,371	67.6	1,324	89,533	99,830	89,533	5,372	17	15	5	3	106.03%	(3)
Burke	431	30,336	70.4	527	37,086	39,736	37,086	2,225	7	7	8	1		1
Cabarrus	624	43,521	69.7	761	53,076	57,379	53,076	3,185	10	6	8	4	69.32%	(4)
Caldwell	464	44,158	95.2	566	53,865	42,676	42,676	2,561	8	6	2	2	95.75%	2
Camden	13	633	48.7	16	774	1,206	774	46	0	0		0		0
Carroll	261	21,582	82.7	319	26,384	24,052	24,052	1,443	5	5		5		5
Caswell	67	7,684	114.7	82	9,394	6,183	6,183	371	1	1		1		1
Catawba	856	66,049	77.2	1,044	80,555	78,718	78,718	4,723	15	11	6	2	65.38%	(2)
Chatham	217	23,581	108.7	265	28,828	19,981	19,981	1,199	4	4		4		4
Cherokee	76	2,670	35.1	93	3,264	7,012	3,264	196	1	1		1		1
Chowan	29	1,160	40.0	35	1,418	2,638	1,418	85	0	0		0		0
Clay	25	1,162	46.5	30	1,394	2,261	1,394	84	0	0		0		0
Cleveland	572	47,622	83.3	698	58,112	52,629	52,629	3,158	10	5	4	1	100.88%	1
Columbus	274	26,319	96.1	334	32,082	25,184	25,184	1,511	5	5	6	1		(1)
Craven	321	38,493	119.9	392	47,058	29,557	29,557	1,773	6	6	7	1		(1)
Cumberland	1,146	68,496	59.8	1,398	83,558	105,409	83,558	5,013	16	14		2	71.59%	0
Currituck	73	5,693	78.0	89	6,960	6,711	6,711	403	1	1		1		1
Dare	97	3,812	39.3	118	4,637	8,897	4,637	278	1	1		1		1
Davidson	567	42,252	74.5	692	51,567	52,177	51,567	3,094	10	8	2	2	20.72%	0
Davie	156	16,457	105.5	190	20,044	14,326	14,326	860	3	3		3		3
Duplin	167	21,273	127.4	204	26,007	15,382	15,382	923	3	3		3		3
Durham	644	43,173	67.0	766	52,693	59,264	52,693	3,162	10	12		2	56.62%	0
Edgemont	187	17,958	95.9	228	21,871	17,191	17,191	1,031	3	3		3		3
Forsyth	1,177	107,615	91.4	1,436	131,296	108,274	108,274	6,496	21	20	10	9	104.41%	(9)
Franklin	149	10,050	67.4	182	12,286	13,723	12,286	737	2	2		2		2
Gaston	1,004	57,108	56.9	1,225	69,679	92,365	69,679	4,181	13	6	6	1	79.45%	0

Table 13C: Year 2014 Hospice Inpatient Bed Need Projections for the 2011 Plan

Column A	Column B	Column C	Column D	Column E	Column F	Column G	Column H	Column I	Column J	Column K	Column L	Column M	Column N	Column O
County	Total Admissions (2009 data)	Total Days of Care (2009 Data)	ALOS per Admission	Total 2014 Admissions	2014 Days of Care at County ALOS	2014 Days of Care at Statewide ALOS	Projected 2014 Days of Inpatient Estimates	Projected Inpatient Days	Projected Total Inpatient Beds	Currently Licensed Beds	CON App'd/Lic. Pending/Prev. Need Determ.	Adjusted Projected Beds	Existing Facility Occupancy Rate	Deficit/(Surplus) Adjusted for facilities not at 85% occupancy (Col. N)
Source or Formula =>	2009 Lic. Data Supplement	2009 Lic. Data Supplement	Col. C / Col. B	Col. B x 5 Yrs Growth at 4.1% annually	Col. D x Col. E	Col. E x Statewide Median ALOS per Admission (75.4)	Lower # of Days of Care between Col. F and Col. G	Col. H * 6%	(Col. I/365) / 85%	Licensure Inventory		Col. J - (Col. K + Col. L)	2009 Lic. Data Supplement	
Gates	26	3,062	117.8	32	3,743	2,413	2,413	145	0			0	0	0
Graham	16	692	43.3	20	846	1,508	846	51	0			0	0	0
Granville	120	7,996	66.6	146	9,728	11,006	9,728	584	2			2	2	2
Greene	71	6,173	86.9	87	7,547	6,560	6,560	394	1			1	1	1
Guilford	1,524	142,376	93.4	1,859	173,673	140,169	140,169	8,410	27	14		13	78.24%	0
Halifax	145	10,224	70.5	177	12,499	13,346	12,499	750	2			2	2	2
Hamett	550	39,736	72.2	671	48,478	50,593	48,478	2,909	9	7		2	66.55%	0
Haywood	305	19,279	63.2	372	23,514	28,049	23,514	1,411	5			5	5	5
Henderson	858	78,926	92.0	1,047	96,312	78,944	78,944	4,737	15	19		(4)	65.55%	(4)
Hertford	74	2,885	39.0	90	3,527	6,786	3,527	212	1			1	1	1
Hoke	78	8,611	110.4	95	10,527	7,163	7,163	430	1			1	1	1
Hyde	32	9,864	308.3	39	12,059	2,941	2,941	176	1			1	1	1
Iredell	649	42,051	64.8	792	51,316	59,717	51,316	3,079	10	9		1	77.23%	0
Jackson	110	7,687	69.9	134	9,397	10,104	9,397	564	2			2	2	2
Johnston	459	34,600	75.4	560	42,214	42,224	42,214	2,533	8		12	(4)	(4)	(4)
Jones	28	4,201	150.0	34	5,136	2,564	2,564	154	0			0	0	0
Lee	219	15,425	70.4	267	18,806	20,132	18,806	1,128	4			4	4	4
Lenoir	230	21,901	95.2	281	26,774	21,187	21,187	1,271	4			4	4	4
Lincoln	298	23,219	77.9	364	28,386	27,446	27,446	1,647	5			5	5	5
McDowell	185	13,805	74.6	226	16,877	17,040	16,877	1,013	3			3	3	3
Macon	133	9,498	71.4	162	11,569	12,215	11,569	694	2		6	(4)	(4)	(4)
Madison	84	3,993	47.5	102	4,849	7,691	4,849	291	1			1	1	1
Martin	83	6,175	74.4	101	7,549	7,615	7,549	453	1			1	1	1
Mecklenburg	2,478	171,032	69.0	3,023	208,648	227,934	208,648	12,519	29	19		10	85.19%	10
Mitchell	109	11,865	108.9	133	14,505	10,028	10,028	602	2			2	2	2
Montgomery	93	11,113	119.5	113	13,503	8,520	8,520	511	2			2	2	2
Moore	431	46,538	108.0	526	56,796	39,660	39,660	2,380	8		11	(3)	(3)	(3)
Nash	302	21,015	69.6	368	25,608	27,747	25,608	1,536	5		6	(1)	(1)	(1)
New Hanover	925	63,221	68.3	1,128	77,095	85,051	77,095	4,626	15	12		3	96.12%	3
Northampton	54	3,151	58.4	66	3,852	4,976	3,852	231	1			1	1	1
Onslow	251	18,878	75.2	306	23,015	23,072	23,015	1,381	4			4	4	4
Orange	401	24,853	62.0	489	30,307	36,871	30,307	1,818	6	6		(0)	77.35%	0
Pamlico	46	3,260	71.3	56	4,010	4,222	4,010	241	1			1	1	1
Pasquotank	122	6,467	53.0	149	7,906	11,235	7,906	474	2			2	2	2
Pender	201	16,955	84.4	245	20,667	18,473	18,473	1,108	4			4	4	4
Perquimans	27	1,864	69.0	33	2,279	2,488	2,279	137	0			0	0	0

Table 13C: Year 2014 Hospice Inpatient Bed Need Projections for the 2011 Plan

Column A	Column B	Column C	Column D	Column E	Column F	Column G	Column H	Column I	Column J	Column K	Column L	Column M	Column N	Column O
County	Total Admissions (2009 data)	Total Days of Care (2009 Data)	ALOS per Admission	Total 2014 Admissions	2014 Days of Care at County ALOS	2014 Days of Care at Statewide ALOS	Projected 2014 Days of Inpatient Care of Inpatient Estimates	Projected Inpatient Days	Projected Total Inpatient Beds	Currently Licensed Beds	CON App'd/Lic. Pending/Prev. Need Determ.	Adjusted Projected Beds	Existing Facility Occupancy Rate	Deficit/(Surplus) Adjusted for facilities not at 85% occupancy (Col. N)
Source or Formula =>	2009 Lic. Data Supplement	2009 Lic. Data Supplement	Col. C / Col. B	Col. B x 5 Yrs Growth at 4.1% annually	Col. D x Col. E	Col. E x Statewide Median ALOS per Admission (75.4)	Lower # of Days of Care between Col. F and Col. G	Col. H * 6%	(Col. I/665) / 85%	Licensure Inventory		Col. J - (Col. K + Col. L)	2009 Lic. Data Supplement	
Person	134	10,748	80.2	163	13,074	12,290	12,290	737	2			2		2
Pitt	469	43,973	93.8	572	53,630	43,129	43,129	2,588	8	8		0	60.34%	0
Polk	168	15,377	91.5	205	18,799	15,457	15,457	927	3			3		3
Randolph	553	45,256	81.8	675	55,240	50,895	50,895	3,054	10	6	6	(2)		(2)
Richmond	253	31,468	124.4	309	38,470	23,299	23,299	1,398	4			6		(2)
Robeson	624	63,611	101.9	761	77,577	57,379	57,379	3,443	11	12	6	(7)	48.63%	(7)
Rockingham	354	17,424	49.2	432	21,263	32,573	21,263	1,276	4	3		1	138.54%	1
Rowan	525	38,095	72.6	640	46,440	48,256	46,440	2,786	9		7	2		2
Rutherford	478	49,717	104.0	593	60,638	43,958	43,958	2,637	9	10		(1)	45.34%	(1)
Sampson	222	26,339	118.6	271	32,200	20,433	20,433	1,226	4		6	(2)		(2)
Scotland	182	17,525	96.3	222	21,425	16,739	16,739	1,004	3	4	2	(3)	7.40%	(3)
Stanly	273	13,332	48.8	333	16,262	25,108	16,262	976	3			3		3
Stokes	229	25,095	109.6	279	30,574	21,037	21,037	1,262	4			4		4
Surry	407	48,055	118.1	496	58,563	37,398	37,398	2,244	7	13		(5)	36.65%	(5)
Swain	60	3,353	55.9	73	4,099	5,504	4,099	246	1			1		1
Sylvania	169	11,977	70.9	206	14,599	15,532	14,599	876	3			3		3
Tyrrell	4	67	16.8	5	82	377	82	5	0			0		0
Union	467	26,756	57.3	570	32,657	42,978	32,657	1,959	6		6	0		0
Vance	97	7,429	76.6	118	9,037	8,895	8,895	534	2			2		2
Wake	2,064	145,498	70.5	2,518	177,502	189,857	177,502	10,650	34	14	10	10	82.69%	0
Warren	49	2,887	58.9	60	3,529	4,524	3,529	212	1			1		1
Washington	31	1,202	38.8	38	1,469	2,865	1,469	88	0			0		0
Watauga	77	7,231	93.9	94	8,840	7,088	7,088	425	1			1		1
Wayne	409	28,987	70.9	499	35,366	37,625	35,366	2,122	7	6	6	(5)	102.65%	(5)
Wilkes	189	10,375	54.9	231	12,684	17,417	12,684	761	2			2		2
Wilson	233	19,309	82.9	284	23,535	21,414	21,414	1,285	4			4		4
Yadkin	138	12,023	87.1	168	14,637	12,667	12,667	760	2			2		2
Yancey	115	18,531	161.1	140	22,559	10,556	10,556	633	2			2		2
Total	33,460	2,650,416	75.4	40,816	3,076,736	3,077,745	3,076,736	184,604	595	276	164		84.13%	

This data is in-process working data for the internal use of the Planning Section, and it may be changed or revised over time. The Planning Section provides no assurance or representations as to its accuracy, and any user of the data assumes the risk of errors or inaccuracy.

Table 13D Hospice Inpatient Facilities: (Proposed 2011 Plan)

County	Facility	Number of Licensed Beds	Number of Beds CON Approved/ Lic. Pending	Days	Occ. Rate For Reporting Period
Alamance	Hospice of Alamance/Caswell- Hospice Home	8		2,120	72.60%
Beaufort	Pamlico/Tar Hospice House		6	NA	NA
Brunswick	Brunswick County Hospice Care Center		7	NA	NA
Buncombe	Care Partners Hospice and Palliative Care	15		5,805	106.03%
Burke	Burke Hospice and Palliative Care		8		NA
Cabarrus	Hospice & Palliative Care of Cabarrus County	6	8	1,518	69.32%
Caldwell	Caldwell Hospice and Palliative Care	6		2,097	95.75%
Catawba	Catawba Valley Hospice House	11		2,625	65.38%
Catawba	Sherrills Ford Hospice House		6	NA	NA
Cleveland	Hospice/Palliative Care Cleveland County	5		1,841	100.88%
Cleveland	Hospice of Cleveland County/Kings Mountain	4		NA	NA
Columbus	Columbus County / Hospice Care Center		6	NA	NA
Cumberland	Lower Cape Fear Hospice	6		1,633	74.57%
Cumberland	Carroll S. Roberson Center	8		2,025	69.35%
Davidson	Henry Etta and Bruce Hinkle Hospice House	8		605	20.72%
Duplin	Carolina East Home Care and Hospice, Inc.	3		620	56.62%
Durham	Duke Hospice, Hock Family Pavilion	12		1,385	31.62%
Forsyth	Kate B. Reynolds Hospice Home	20	10	7,622	104.41%
Gaston	Robin Johnson House - Gaston Hospice	6		1,740	79.45%
Gaston	Gaston Hospice House - Mount Holly		6	NA	NA
Guilford	Hospice/Palliative Care of Greensboro/ Beacon	8		1,891	64.76%
Guilford	Hospice Home at High Point	6		2,107	96.21%
Harnett	E. Carlton Powell Hospice House	7		1,701	66.58%
Henderson	Four Seasons Hospice and Palliative Care	19		4,546	65.55%
Iredell	Gordon Hospice House	9		2,537	77.23%
Johnston	Johnston Memorial Hospital		12	NA	NA
Mecklenburg	Presbyterian Hospital / Harris Hospital Unit	8		2,278	78.01%
Mecklenburg	Levine and Dickson Hospice House	11		3,860	96.14%
Moore	First Health Hospice/Palliative Care		11	NA	NA
Nash	Nash Regional Hospice House		6	NA	NA
New Hanover	Lower Cape Fear Hospice / Hospice Care Center	12		4,210	96.12%
Orange	Duke Hospice at the Meadowlands	6		1,694	77.35%
Pitt	University Health Systems Inpatient Hospice	8		1,678	57.47%
Richmond	Hospice Haven of Richmond County		6	NA	NA
Robeson	Southeastern Regional Medical Center	12	6	1,968	44.93%
Rockingham	Hospice of Rockingham County	3		1,517	138.54%
Rowan	Rowan Regional Medical Center		7	NA	NA
Rutherford	Hospice of Rutherford County / Hospice Home	10		1,655	45.34%
Scotland	Hospice of Scotland County/Hospice House	4	2	108	7.40%
Surry	Mountain Valley Hospice & Palliative Care	13		1,739	36.65%
Union	Hospice of Union County		6	NA	NA
Wake	Rex Hospital	6		1,811	82.69%
Wake	Hospice of Wake County	14	10	NA	NA
Wayne	3HC/Kitty Askins Hospice Center	6	6	2,248	102.65%
Total Beds, Days and Occupancy		280	129	69184	67.69%
6/21/2010	Number of Facilities	32	12		

* Adjusted for beds open during the data reporting year or for part of data reporting year. Figures were taken from the 2010 Hospice Data Supplements. Data were self reported.

Table 13E Inventory of Hospice Residential Beds by County

County	Facility Name	Operational Facility	CON Approved/ License Pending
Alamance	Hospice of Alamance/Caswell	8	
Buncombe	Community Care Hospice	12	
Burke	Burke Hospice and Pallative Care	6	
Cabarrus	Hospice of Cabarus County, Inc.	6	
Caldwell	Caldwell Hospice/Hospice House		5
Catawba	Catawba Valley Hospice	10	
Cleveland	Hospice of Cleveland Cty-Wendover	9	
Cleveland	Hospice of Cleveland-King Mountain	4	
Davidson	Hinkle Hospice House	4	
Duplin	Carolina East Hospice	3	
Forsyth	Kate B. Reynolds Hospice Home	10	
Gaston	Gaston Hospice House-Mount Holly		5
Gaston	Hospice Gaston County-Johnson House	6	
Guilford	Hospice of the Piedmont, Inc.	8	
Guilford	Hospice of Greensboro-Beacon Place	6	
Iredell	Hospice of Iredell County, Inc.	6	
Johnston	Johnston Memorial Hospital		6
Mecklenburg	Levine & Dickson Hospice House	5	
Nash	Nash Regional Hospice House		6
Randolph	Hospice of Randolph County		4
Richmond	Richmond County Hospice, Inc.	6	
Rockingham	Hospice of Rockingham County, Inc.	5	
Rowan	Rowan Regional Medical Center		7
Rutherford	Hospice of Rutherford County, Inc.	8	
Scotland	Hospice of Scotland County	6	
Surry	Hospice of Surry County-Dobson	7	
Union	Hospice of Union County, Inc.	14	6
Wake	Hospice of Wake County		6
Wayne	Kitty Askins Hospice Center	6	6
T O T A L	B E D S	155	51

NOTE: No other counties have "operational or "CON Approved-License Pending, hospice residential facilities.

Figures were taken from the 2010 Hospice Data Supplements. Data were self reported.

The Planning Section provides no assurance or representations as to its accuracy, and any user of the data assumes the risk of errors or inaccuracy.



Welcome to HospiceHouseFoundationWNC.com

- Home
- News
- About Us
- Board Members
- Future House
- How To Help
- Fundraisers
- Events
- Donate Online
- Contact Us

Hospice House Foundation of WNC, Inc. - Home

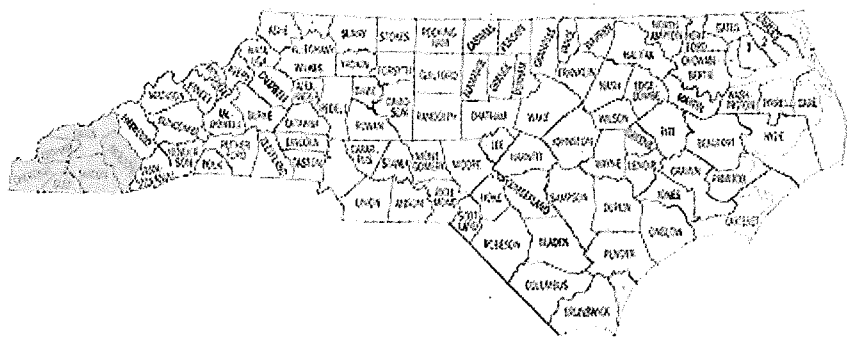
Death is a natural, final stage of life. And Hospice enables people to live their final days to the fullest.

The HHF is preparing a Certificate of Need application required by the state of North Carolina. **CLICK HERE IF YOU ARE WILLING TO HELP WITH THIS PROJECT BY WRITING A LETTER OF SUPPORT**

"The Mission of the Hospice House Foundation of WNC, is to Obtain Funds for the Construction and Endowment of an Inpatient Facility for our Community and to Support Hospice."



The Hospice House Foundation of WNC, Inc. was incorporate in August, 2005. The organization was founded by a group of Hospice House Volunteers who, in the course of caring for patients, and in conversation with patient families, recognized the critical need for an inpatient hospice residence in our community.



THERE IS NO INPATIENT/ RESIDENTIAL HOSPICE FACILITY WEST OF ASHEVILLE AND HENDERSONVILLE. OUR HOSPICE HOUSE WILL NOT ONLY SERVE PATIENTS IN MACON COUNTY, BUT ALL PATIENTS IN SURROUNDING COUNTIES.

At The Hospice House, the patient's needs will be fulfilled!



When faced with a life limiting illness, Hospice House care offers the most experienced hospice care team that is dedicated to the family's needs.

Our Hospice will include physical, social, emotional and spiritual care as well as interpersonal relationships with family and close friends.

Our Hospice Care will be patient centered, family focused, and our skills and expertise will support the dignity and quality of life of patients and their loved

ones.

At Hospice House, care teams will provide advice and support to help patients and families understand their options and make choices that are right for them.

The purpose of an inpatient and residential private hospice facility is to care for patients who have no caregivers, or have no ability to pay for hospice care. There are many patients who we have had to turn away because Medicare requires a full time caregiver in the home, or the patient has no insurance. Many patients fall through the cracks.

Our hospice care team will provide:

- Medical care, physicians and specially trained nurses.
- Personal care will be provided by nurse assistants who help patients with personal hygiene.
- Emotional care will be assisted by social workers and bereavement counselors who offer emotional support for both patients and their families.
- Spiritual care will be provided by spiritual counselors who provide support regardless of religious affiliation. Volunteers will assist patient's families with their daily needs.
- Volunteers will assist patient's families.

Any person with a life expectancy of six months or less can benefit from the hospice house services. We care for patients of all ages and cultural origins. Some patients will reside in The Hospice House longer than six months. Patients are reevaluated every six months.

One of the greatest benefits will be that family members are allowed to stay with their loved one at The Hospice House.

Hospice House care is covered by Medicare, Medicaid, and some private insurances. The benefit covers hospice care provided by our team, medical equipment, supplies and medications that are related to the life limiting illness.

Our hospice facility will provide a home-like atmosphere for our patients and their families. The Hospice House Foundation's goal is to raise \$3,000,000 to \$4,000,000 to build the facility, and to continually raise funds for operating expenses through gifts, bequests, grants and endowments.

We have set up an endowment fund with the Community Foundation of Western North Carolina.

To make a donation, or volunteer to help with our fundraising, please contact:

Hospice House Foundation of WNC, Inc.
P.O. Box 815
Franklin, NC 28744

828-524-6375 or 828-526-0073



[Home](#) | [News](#) | [About Us](#) | [Members](#) | [Future House](#)
[How to Help](#) | [Fundraisers](#) | [Events](#) | [Contact Us](#)

© Copyright 2007 Hospice House Foundation of WNC, Inc. - All Rights Reserved

Web site design & hosting donated by Internet Media Technologies & ITistic Inc.





- Home
- News
- About Us
- Board Members
- Future House
- How To Help
- Fundraisers
- Events
- Donate Online
- Contact Us

Hospice House Foundation of WNC, Inc. - About Us

What is the Hospice House Foundation of WNC?

Hospice House Foundation of WNC, was established in 2005 as an all volunteer not for profit organization. "The Mission of the Hospice House Foundation of WNC is to Obtain Funds for the Construction and Endowment of an Inpatient Facility for our Community and to Support Hospice."

What is meant by 'inpatient facility'?

Our Hospice House will be a home-like residence that provides high quality, 24 hour professional, compassionate end of life care. Most people would choose to be in their own homes to receive hospice care. For those that live alone, in isolated situations, or whose primary care giver can no longer continue in this role, Hospice House is a welcome option.

What facilities will it have?

As a freestanding building it will offer:

- A full kitchen
- Dining Room
- Lounge/Family room
- Chapel
- Office
- Private bedrooms with bath, sleeper couch and comfortable chairs, lots of windows and perhaps a private porch or deck.

How Can You Help?

If you would like more information about Hospice House Foundation of WNC or would like to become involved in the project, please contact Michele Alderson at 828-524-6375, or Evie Byrnes at 828-526-0073

Donations are welcome and are tax deductible.

They may be made to:

Hospice House Foundation of WNC, Inc.
P.O. Box 815
Franklin, NC 28744

[Home](#) | [News](#) | [About Us](#) | [Members](#) | [Future House](#)
[How to Help](#) | [Fundraisers](#) | [Events](#) | [Contact Us](#)

© Copyright 2007 Hospice House Foundation of WNC, Inc. - All Rights Reserved

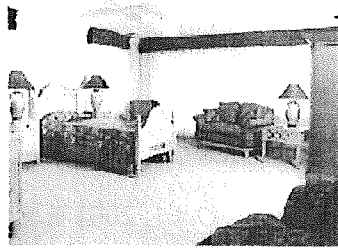
Web site design & hosting donated by [Internet Media Technologies & ITistic Inc.](#)





- Home
- News
- About Us
- Board Members
- Future House
- How To Help
- Fundraisers
- Events
- Donate Online
- Contact Us

Hospice House Foundation of WNC, Inc. - Future House



A Hospice House is a residence created to care for patients who are unable to stay in their own home and are in need of end-of-life care.

Hospice Houses offer a variety of services to meet the physical, emotional, mental and spiritual needs of its residents.

What services are provided?

The Hospice House will offer the following services:

- Medical and Nursing Care is provided by a staff of registered/licensed nurses and trained caregivers 24 hours a day, 7 days a week. A personalized care plan will be developed for each patient under the direction of the patient's primary care physician.
- Chaplains will be available to talk about spiritual and/or religious issues of concern to resident and/or family.
- Social Workers are available to discuss emotional and family challenges, as well as grief and loss issues. Bereavement services will be provided following the death of a resident for loved ones, the survivors.
- Volunteers will be an important aspect of hospice house care. They will be available to assist patients/families in helping with activities, care, errands. Volunteers will be supportive 'angels' to patients and families.

Who Will Be Eligible for Hospice House?

Any individual who meets Hospice criteria and who does not have an appropriate 24 hour-a-day caregiver, is eligible upon availability to The Hospice House. The Hospice House will accept patients regardless of race, color, disability, sex, creed or ability to pay.

How Will Care Be Paid For?

Payment for hospice care will come from Medicare, Medicaid, private insurance and/or donations. Room and board at Hospice House will not be covered by most insurance companies. A proposed sliding fee scale will be used to determine room and board rates. The admission to Hospice House will be based on need, not on the ability to pay.

[Home](#) | [News](#) | [About Us](#) | [Members](#) | [Future House](#)
[How to Help](#) | [Fundraisers](#) | [Events](#) | [Contact Us](#)

© Copyright 2007 Hospice House Foundation of WNC, Inc. - All Rights Reserved

Web site design & hosting donated by [Internet Media Technologies](#) & [iTistic Inc.](#)



A Gift



Has Received a gift
In Loving Memory of

Graciously given by



"The Mission of the Angel Hospice Foundation is to Obtain Funds for the Construction & Endowment of an Inpatient Facility for our Community and to Support Hospice."



What is the Angel Hospice Foundation?

Angel Hospice Foundation was established in 2005 as an all-volunteer not-for-profit organization. "The Mission of the Angel Hospice Foundation is to Obtain Funds for the Construction and Endowment of an Inpatient Facility for our Community and to Support Hospice." Members include Hospice volunteers and employees, clergy and business people, homemakers, retirees and professional people.

What is meant by "inpatient facility"?

Our Hospice House will be a home-like residence that provides high quality, 24 hour professional, compassionate end of life care. Most people would choose to be in their own homes to receive hospice care. For those that live alone, in isolated situations, or whose primary care giver can no longer continue in this role, Hospice House is a welcome option.

What facilities will it have?

As a freestanding building it will offer:

- A full kitchen
- Dining room
- Lounge/Family room
- Chapel
- Office
- Private bedrooms with bath, sleeper couch and comfortable chairs, lots of windows and perhaps a private porch or deck.

How can I help?

If you would like more information about the Hospice House or would like to become involved in the project, please contact Michele Alderson at 828-524-6375, or Ann Schmidt at 828-349-4823.

Donations are welcome and are tax deductible.

They may be made to:

Angel Hospice Foundation
P.O. Box 815
Franklin, NC 28744



JUNE 23, 2005

The Macon County

NEWS

Hospice Seeking Own Facility

By Beth Seay

Angel Hospice was begun in the early 1980's when a group of volunteer nurses recognized a need in the community.

The National Association of Hospice and Palliative Care said that hospice is "a philosophy of care that accepts dying as a natural part of life. Hospice seeks to neither hasten nor postpone death when it is inevitable." Palliative care includes

"treatment that enhances comfort and improves quality of an individual's life during the last phases of life. The individual's choices are paramount and must be followed."

Angel Hospice, which serves Macon, Jackson, Swain and Graham counties, follows these tenets, according to Michèle Alderson, president of the Angel Hospice Foundation, and hospice nurse Sallie Tallent.

Tallent said that from

the group of volunteers in the 1980s, they were able to hire a paid nurse in 1990, and Martha Lynd became clinical supervisor five years ago. Formerly, hospice had been part of home health, but by now had become "Angel Hospice and Palliative Care." Other staff include physician Carlos Vargas and chaplain Vic Greene.

The program is supported by a large, very involved group of volunteers who began three years ago. Volunteers must go through a training program, and may volunteer in any of several different positions, including in the patient's home, in the hospice office, or with the program's social work-

Continued Page 28

Hospice — From Page One

er. Currently there are 25 volunteers involved with the program.

Alderson stressed that Hospice cares not only for the patient, but also for the family, and supports the family through the bereavement process for at least a year.

Sometimes it is difficult to set up hospice in the home, because a 24-hour caregiver must be available, such as a child or spouse. On rare occasions, this rule can be waived, but generally the patient needs the 24-hour care.

"We just see the need," Alderson said. "Some patients have no caregivers, no spouse or family, and are too frail to care for themselves."

It was this difficulty, among others, that began Hospice staff thinking about a Hospice House, where hospice patients could be housed in a home-like environment, surrounded by family and friends and with 24-hour nursing staff in the home. Hospice workers began the process by contacting the state, who must allocate the beds, and contacting local supporters, who have been writing letters and making contributions toward the future Hospice Home.

"Right now," Alderson said, "We are seeking letters of support from the community and those who have experience with hospice, doctors, the town and county governments."

Currently, the group is waiting on the latest census due July 1, which will tell the state whether the counties have the numbers necessary to support a Hospice Home. Alderson said community letters of support could make a real difference, along with donations towards the future house.

Alderson said the mission statement of the Angel Hospice Foundation is to "fund and support a hospice residence." She urges local residents to write letters of support addressed to Angel Hospice, P.O. Box 815, Franklin, NC 28744. Financial contributions are also welcome and should be made to the Angel Hospice Foundation so they can go directly to the house.

While still in the early planning stages, this group of committed people believe they can make a difference in the end-of-life issues of many of our local residents. More information about the home and its progress should be available after the first of July.

For more information on Hospice, call 369-4206.



August 27, 2008

Warren & Ann Schmidt
220 Weaver Lane
Otto, NC 28763

Board of Directors

Michelle Alderson,
President

Eylea Byrnes,
Vice President

Sallee Coss,
Secretary

Carolyn Hucussion,
Treasurer

Todd Davis, MD

Ron Fisher, MD

Elizabeth Lefford

Cindy Miles

Sara Stevens

Carlos Vargas, MD

Marvin Bachtel

Dear Friend and Supporter of Hospice House Foundation of WNC, Inc.:

On behalf of the Board of Directors of the Hospice House Foundation of WNC, I would like to thank you for your support of the creation of a hospice house for our community. This is an update on the progress of our project.

Despite our community's need for such a facility, demonstrated by a professional consultant's market feasibility study and business plan, as well as our ongoing efforts to seek support from Angel Medical Center, the hospital has recently notified us that they are unwilling to enter into a partnership with us. We are therefore exploring alternatives such as potential partnerships with other organizations.

To date, we have done everything we can to realize our mission so that our loved ones will have a local inpatient facility for optimal 24-hour hospice care. We assure you that we have worked very hard to be good stewards of all funds donated toward this cause. There have been expenses incurred, from CPA and legal fees for establishing the Foundation as a not-for-profit corporation to consultant fees for the market feasibility study and business plan. We are willing to provide you with a detailed financial disclosure upon request.

Regardless of the setback, we are more committed than ever to make this invaluable dream a reality, and we value your continued support of this project. If, however, we are unable to achieve the goal of a Hospice House, the Foundation will refund your contribution, less the expenses incurred to date. We certainly hope and pray that this will not be the outcome.

The benefit to our community from this facility will continue to motivate us, as our Mission Statement declares. Should you have any questions, please feel free to contact me. We will continue to keep you informed.

Sincerely,

Michelle Alderson
President
Hospice House Foundation of WNC, Inc.

P.O. Box 818
Franklin, NC 28744
828-524-6375
[www.hospicehouse
foundationwnc.com](http://www.hospicehousefoundationwnc.com)

The Mission of the Hospice House Foundation of WNC, Inc. is to obtain funds for the construction & endowment of an inpatient facility for our community and to support Hospice.

LETTER to the editor

Hospital urged to support Hospice facility

Because of the monetary support my family and I give to Hospice, I recently received a letter from the President of the Hospice House Foundation of WNC indicating that, although there was a community need for the Hospice House facility based on professional market studies, the Angel Medical Center has refused to partner with the foundation. The Hospice House Board of Directors has pursued this effort for several years and I am appalled that Angel Medical Center would not encourage and welcome an inpatient facility

of this caliber to the area. Fortunately, we were able to keep my father, who died in April, at home, but only with the help of Hospice and Home Health. However, I know of many other families who are not able to care for their family members who could welcome a place for their loved ones — a place of sensitivity and compassion and support.

Every other area in the state except Western North Carolina has hospice inpatient facilities, which is why, when the Hospice House Board of Directors petitioned the state

for inpatient beds, they were approved.

Surely Angel's board of trustees will come to its senses and realize the positive impact this facility would have for our community. The board members should change their minds before the Hospice House Board approaches others out of the area who are more forward thinking, who would understand the importance of bringing this facility into Western N.C.

Michelle M. McMahon
Sylvia

Foundation working for hospice house

Although the endeavor to build a local Hospice House has been delayed, the effort will still continue, according to Hospice House Foundation of WNC, Inc., president and Hospice volunteer Michele Alderson.

In 2004, a nonprofit foundation was created by a group of Angel hospice volunteers who recognized the critical need for an inpatient hospice residence in our community.

The hospice foundation then became incorporated in September 2005.

It was originally named

the "Angel Hospice Foundation" and has been renamed the "Hospice House Foundation of WNC, Inc."

The mission of this foundation is to obtain funds for the construction and endowment of an inpatient facility for our community and to support Hospice.

The foundation, composed of three doctors and several concerned community members, originally hoped to partner with Angel Medical Center to staff and operate the house.

AMC recently notified

the Foundation that the effort does not fit with their other priorities.

The foundation has already invested considerable effort in this undertaking, and its members believe that the need, interest and support of the community is demonstrated by the fact that more than 500 contributions have been received.

So far, the foundation has raised \$140,000 with no capital campaign, receiving contributions from individuals, hospice families, civic organizations and churches for

the establishment of a Hospice House.

The foundation sent letters to 530 doctors to inform them of the change, Alderson said.

Despite the setback, the foundation is committed to fulfilling the need for a Hospice House and is in the process of exploring alternatives for other organizations with which to partner.

"We are still going to do it," Alderson said. "It's going to happen."

Hospice House moves forward without AMC backing

By D. Lunar Wisdom
News Editor

Angel Medical Center decided again last month it could not support a capital project of the magnitude of a new Hospice House for Western Carolina.

The concept is three years in the making here in Mason County since the Hospice House Foundation's incorporation in 2005. The group has worked to bring a "home-style" residence for inpatient hospice patients and those without caregivers to assist them at home.

"Hospice volunteers saw a need in Mason County, so we had to send our patients far away for this type of

care," said Michele Alderson, Hospice House Foundation president. She said the closest hospice care facilities in Western North Carolina were in Asheville and Hendersonville and approximately 40 are located across the state.

Earlier this month, Michele McMahon, a hospice foundation donor, sent a letter to area newspapers expressing her concern over the AMC board's decision.

"Surely Angel's Board of Trustees will come to its senses and realize the positive impact this facility would have for our community," she said. "The Board members should change their mind before the Hospice House Board approaches

them out of the area who are more forward thinking and who would understand the importance of bringing this facility into Western North Carolina."

Alderson said that is exactly what the board is now faced with.

Hospice and Home Health Director Jean Sprinkle directed inquiries into the situation to the hospital's marketing director, Bonnie Peltz.

"It's just not feasible at this time, unfortunately, because we see Hospice House as a very positive thing. We are definitely for it," Peltz said.

She said that the feasibility study came back with an estimated cost of \$4 million to construct the 10 to 12 patient bed

freestanding facility.

"Then, even if it was working optimally, we would still be operating at a loss for the first several years," she said, adding that the hospital will continue its home health and hospice services it currently offers.

Alderson said the organization did not need AMC to commit to pay for the building, that was the purpose of the foundation. In addition, the group had already found a building for sale which could be converted for a Hospice House. The price of the building is listed at \$1.2 million.

While renovations would be needed, the cost would be far less than the \$3.96 million the feasibility study indicated.

"What we needed from Angel was a commitment to help staff the facility," she said. "We can't proceed to file a certificate of need with the state unless we have the staffing issue situated."

According to the study completed by Health

Planning Source, one nurse and two CNAs would be needed for every four to five patients, said Alderson.

"When they said they probably won't break even, they were including the whole thing — mortgages, insurance," Alderson said.

Tom Hubbs, AMC chief executive officer said since hospice began in 1996, the hospital has been fully committed to the program.

"During the past year, Angel Home Health and Hospice provided 11,341 hospice days of care," he said. "Based on our most recent financial statements, the approximate cost of providing those services was \$1,266,000, with losses expected to exceed \$40,000 this year."

"In addition," he said, "the hospital is planning for a three percent reduction in reimbursement from Medicaid and Medicare."

"It is our hope that a Hospice House can be a reality in Mason County

comedy, but do not believe there is sufficient funding for a separate facility dedicated to Hospice services at this time."

Hospice, according to hospice.org, is a concept of care rather than a place of care; it focuses on quality of life as opposed to quality of life; offering a special level of comfort and care for those who are dying.

Alderson is a volunteer with hospice in addition to serving on the board for Hospice House.

The idea of a Hospice House is to create a home-like setting with multiple private rooms opening into a central living and kitchen area. It offers a chance for families to come and stay with their loved ones. Typically, a hospice patient has been given less than six months to live, though they may exceed that time limit. The patients are revolved every six months.

Some patients are not able to stay at home and may need inpatient treatment, sometimes the

HOSPICE HOUSE FOUNDATION OF WNC, INC.
 Yes we will BUILD A HOSPICE HOUSE IN WNC
 Zero deductible donations may be made to
HOSPICE HOUSE FOUNDATION OF WNC, INC.
 P.O. Box 875
 Franklin, NC 28744
 www.hospicehousefoundationwnc.com

home caregiver in elderly and needs help, and sometimes the person may have no family to assist in their care. These are the patients ideal for hospice houses.

"The frustrating part is that every time Angel says no, we are looking at a minimum of two years before we can even think of getting this off the ground," Alderson said.

She said they have been held up in the past by AMC during the transition of CEOs, and the

news this year was disappointing.

Foundation board member Dr. Ben Fisher said, "We recognize that sometimes someone must make tough choices, but for us, the foundation board, this is much more than a business it is a calling."

As a hospice physician with WestCare he said he has seen firsthand the process that a dying patient goes through, and how the process is made more painful when proper

inpatient care cannot be provided.

"For this reason, we're going to continue with our plans to build a Hospice House. We are not going away — no way," he said.

Alderson said the organization is now looking at other hospice providers in the area, through West Care,

Highlands-Cashiers Hospital, Hayesville, Murphy and even Clayton, Ga, for a new partner to provide the skilled hospice care.

Since its inception, and without any capital campaign, the organization has received 500 donors and more than \$140,000 in donations. The group will continue to accept donations and will aim to start an official campaign when a partner for medical services is found.

To learn more about hospice house, call Alderson at (828) 529-6375 or visit online at www.hospicehousefoundationwnc.com.



Angel Medical Center
Photo by Vickie Dierksen

LETTER to the editor

Hospital CEO explains Hospice House decision

I am responding to Michele M. McMahon's letter included in the Sept. 12 *Franklin Press*. I would like to clarify Angel Medical Center's commitment to hospice services.

Angel Home Health and Hospice is an integral part of Angel Medical Center with home health being in operation since 1973 and hospice services beginning in 1996.

During this past year, Angel Home Health and Hospice provided 11,341 hospice days of care. Based on our most recent financial statements, the approximate cost of providing these services was \$1,366,000 with losses expected to exceed \$40,000 this year. We also have information that legislation will reduce hospice reimbursement from Medicare and Medicaid 3 percent per year over the next three years, yet hospice services will continue to be a core part of Angel Medical Center's operations.

Part of the hospice benefit we currently provide includes inpatient care for pain or symptoms that can no longer be managed at home, plus a five-day respite that families may access for caregiver crisis/relief. Angel Home Health and Hospice has contracts with various

hospitals throughout the region, including Angel, to provide both inpatient and respite care. Any hospital room may be utilized for inpatient or respite care, but on Dec. 12, 2005, one of the rooms at Angel Medical Center was designated for hospice use and renovated to provide a more home-type environment. The renovations were funded by donations from the community.

The Hospice House Foundation of WNC is an organization independent from Angel Medical Center and does not cover any of the costs of our hospice program. Our understanding is the purpose of the Hospice House Foundation is to develop a free-standing Hospice House. Their board approached Angel Medical Center to see if we would consider staffing the House. Our board of trustees liked their vision and agreed to pay one half of the cost of preparing a financial feasibility study for the house.

The study indicated that the facility would cost \$3,957,400 to build and would have substantial operating losses for the first three years. We knew that to get the facility approved by the NC Health Facilities Commission, the hos-

pital would likely need to guarantee the funding of the program unless sufficient funds were raised on the front-end.

Angel Medical Center conveyed to the Hospice House Foundation of WNC that we would love to see a Hospice House in our community; however, with the other commitments we have at the hospital and the enormous costs to begin and operate the program, we did not feel comfortable proceeding unless there was a source of funds to cover the costs of the facility and the losses projected during the first three years.

We have worked hard to try to utilize the resources available to provide services to our community. It is our hope that a Hospice House can be a reality for this area someday, but do not believe there is sufficient funding for a separate facility dedicated to hospice services at this time. We will continue to provide hospice services, including inpatient services, as we have in the past. If you have questions about Angel Medical Center or this decision, please contact me at 828.369.4232.

Tim Hubbs
CEO of Angel Medical Center